



# MOTOROLA XOOM™ 2 media edition with 4G

LIFE. POWERED.

YOUR TABLET  
START  
TOUCH  
NAVIGATE  
PERSONALISE  
TYPE  
LOAD UP  
SURF  
PLAY & RECORD  
CONTROL  
LOCATE  
EMAIL  
CHAT  
CONTACT  
READ  
WORK  
NOTE  
CONNECT  
PROTECT  
ACCELERATE  
WANT MORE?  
TROUBLESHOOTING  
SAFETY, REGULATORY & LEGAL



More

Support



Back

Next



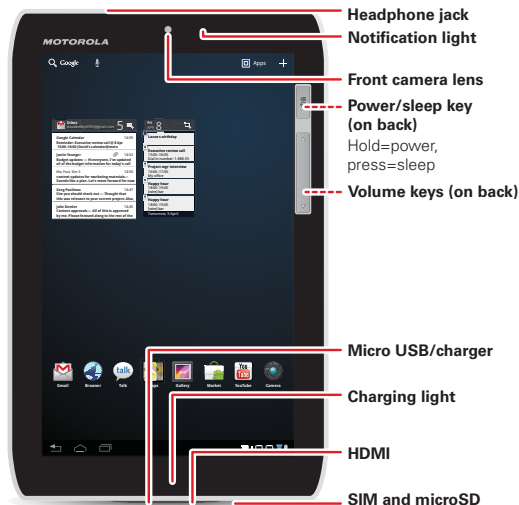
Your tablet

## YOUR TABLET

### AT A GLANCE

When you're up and running, make sure you explore what your tablet can do:

- **Customise:** Start up, then "**PERSONALISE**" your tablet.
- **Create:** Check and send your "**EMAIL**", and even create and edit documents and calendar events for "**WORK**".
- **Enjoy:** "**LOAD UP**" your tablet's apps and games, or "**PLAY & RECORD**" media and "**CONTROL**" your TV.



### TIPS & TRICKS

- **Power/Sleep:** To turn your tablet on or off, press and hold Power/Sleep on the back. To make the screen sleep or wake up, press but don't hold.

**Note:** Wi-Fi-only devices don't have a SIM card. Certain apps and features may not be available in all countries.

### SAR

This product meets the applicable limit for exposure to radio waves (known as SAR) of 2.0 W/kg (ICNIRP). The limits and guidelines include a substantial safety margin designed to assure the safety of all persons, regardless of age and health. The highest SAR values measured for this device are listed in the regulatory information packaged with your product.



# MOTOROLA XOOM™ 2 media edition with 4G

LIFE. POWERED.

YOUR TABLET  
START  
TOUCH  
NAVIGATE  
PERSONALISE  
TYPE  
LOAD UP  
SURF  
PLAY & RECORD  
CONTROL  
LOCATE  
EMAIL  
CHAT  
CONTACT  
READ  
WORK  
NOTE  
CONNECT  
PROTECT  
ACCELERATE  
WANT MORE?  
TROUBLESHOOTING  
SAFETY, REGULATORY & LEGAL

## START

### SETUP

Let's get you up and running.

**Caution:** Before assembling, charging or using your device for the first time, please read the important safety, regulatory and legal information in this guide.

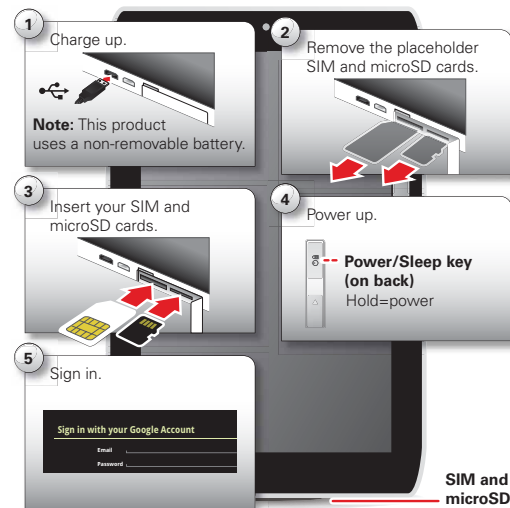
### TIPS & TRICKS

- In the unlikely event that your tablet becomes unresponsive, try a forced reboot—press and hold both Power/Sleep and the down volume key for more than 12 seconds.

**Note:** This product uses a non-removable battery. The battery should only be replaced by a Motorola-approved service facility. Any attempt to remove or replace your battery may damage the product.

**Note:** Wi-Fi-only devices don't have a SIM card.

**Note:** This device supports apps and services that use a lot of data, so make sure your data plan meets your needs. Contact your service provider for details.



More

Support



Back

Next



Start



# MOTOROLA XOOM™ 2 media edition with 4G

LIFE. POWERED.

YOUR TABLET  
START  
TOUCH  
NAVIGATE  
PERSONALISE  
TYPE  
LOAD UP  
SURF  
PLAY & RECORD  
CONTROL  
LOCATE  
EMAIL  
CHAT  
CONTACT  
READ  
WORK  
NOTE  
CONNECT  
PROTECT  
ACCELERATE  
WANT MORE?  
TROUBLESHOOTING  
SAFETY, REGULATORY & LEGAL



More

Support



Back

Next



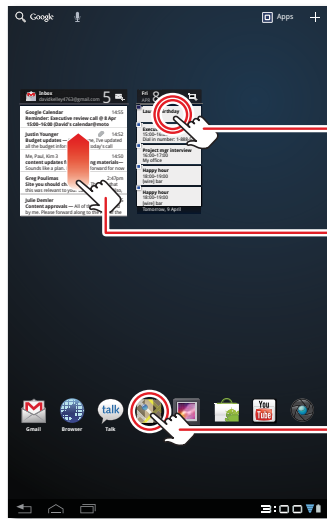
Touch

## TOUCH

### QUICK START: TOUCH

It's all in the touch:

- **Touch:** Choose an icon or option.
- **Touch & hold:** Move items on the home screen, or open options for items in lists.
- **Drag or flick:** Scroll slowly (drag) or quickly (flick).
- **Pinch or double-tap:** Zoom in and out on websites, photos and maps.



Touch & hold to move items on the home screen, or to open options for items in lists.

Flick or drag to scroll.

Touch to open.

### TIPS & TRICKS

- **Flick & stop:** When you flick a long list, touch the screen to stop it from scrolling.
- **Maps:** Twist a map with two fingers to rotate it, and pull two fingers down to tilt it.



# MOTOROLA XOOM™ 2 media edition with 4G

LIFE. POWERED.

YOUR TABLET  
START  
TOUCH  
NAVIGATE  
PERSONALISE  
TYPE  
LOAD UP  
SURF  
PLAY & RECORD  
CONTROL  
LOCATE  
EMAIL  
CHAT  
CONTACT  
READ  
WORK  
NOTE  
CONNECT  
PROTECT  
ACCELERATE  
WANT MORE?  
TROUBLESHOOTING  
SAFETY, REGULATORY & LEGAL



More

Support



Back

Next



Navigate

## NAVIGATE

### QUICK START: NAVIGATE

Find your way around:

- **Search:** Search with text or voice.
- **App menu:** See all your apps (if you have a lot, flick left and right to see them all).
- **Back:** Go back one screen.
- **Home:** Return to the home screen at any point.
- **Recent apps:** Show thumbnails of your recent apps (touch a thumbnail to open the app).



## TIPS & TRICKS

- **Panels:** Flick left or right to show the five home screen panels. To return to the centre panel, touch Home .
- **Notifications:** Touch the clock in the bottom right to show your tablet's status and details about any new messages or other notifications.
- **Menu:** When you see in the top right, or in the bottom left, you can touch them to open a menu for the screen you're on.





# MOTOROLA XOOM™ 2 media edition with 4G

LIFE. POWERED.

YOUR TABLET  
START  
TOUCH  
NAVIGATE  
PERSONALISE  
TYPE  
LOAD UP  
SURF  
PLAY & RECORD  
CONTROL  
LOCATE  
EMAIL  
CHAT  
CONTACT  
READ  
WORK  
NOTE  
CONNECT  
PROTECT  
ACCELERATE  
WANT MORE?  
TROUBLESHOOTING  
SAFETY, REGULATORY & LEGAL



More

Support



Back

Next



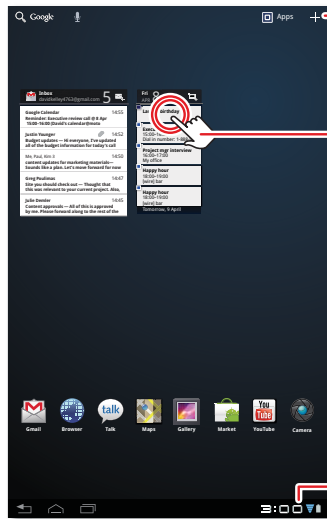
Personalise

## PERSONALISE

### QUICK START: PERSONALISE

Change your widgets, wallpaper and more—make it yours.

- **Home screen:** To move widgets or shortcuts, touch and hold them. To add them or change wallpaper, touch in the top right.
- **Sound & display:** Touch the clock in the bottom right, then touch and **Settings** to choose **Screen**, **Sound** and more.



Add widgets, wallpaper and more to your home screen.

Touch & hold, then drag widgets or shortcuts to a new spot or the bin in the top right.

Touch the status indicators, then touch twice to change your screen, sound or other settings.



### TIPS & TRICKS

- **Add to your home screen:** Just touch and hold an empty spot on the home screen.
- **Remove from your home screen:** Touch and hold a widget or shortcut, then drag it to the bin in the top right.
- **Settings app:** To open settings from the app menu, touch **Apps** > **Settings**.




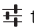
# MOTOROLA XOOM™ 2 media edition with 4G

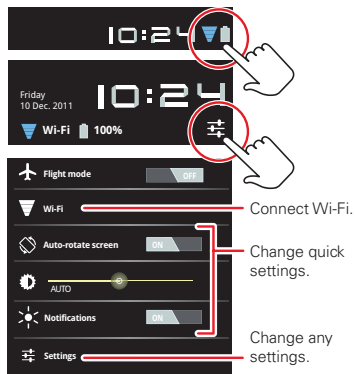
LIFE. POWERED.

**YOUR TABLET**  
**START**  
**TOUCH**  
**NAVIGATE**  
**PERSONALISE**  
**TYPE**  
**LOAD UP**  
**SURF**  
**PLAY & RECORD**  
**CONTROL**  
**LOCATE**  
**EMAIL**  
**CHAT**  
**CONTACT**  
**READ**  
**WORK**  
**NOTE**  
**CONNECT**  
**PROTECT**  
**ACCELERATE**  
**WANT MORE?**  
**TROUBLESHOOTING**  
**SAFETY, REGULATORY & LEGAL**

## SETTINGS

Open the quick settings menu to change your settings or turn on Wi-Fi.

- 1 Touch the clock in the bottom right-hand corner of the home screen.
- 2 Touch .
- 3 Change a quick setting, or touch  to see all tablet settings.



More

Support



Back

Next



Personalise



# MOTOROLA XOOM™ 2 media edition with 4G

LIFE. POWERED.

YOUR TABLET  
START  
TOUCH  
NAVIGATE  
PERSONALISE  
TYPE  
LOAD UP  
SURF  
PLAY & RECORD  
CONTROL  
LOCATE  
EMAIL  
CHAT  
CONTACT  
READ  
WORK  
NOTE  
CONNECT  
PROTECT  
ACCELERATE  
WANT MORE?  
TROUBLESHOOTING  
SAFETY, REGULATORY & LEGAL



More



Back



Type

Support



Next

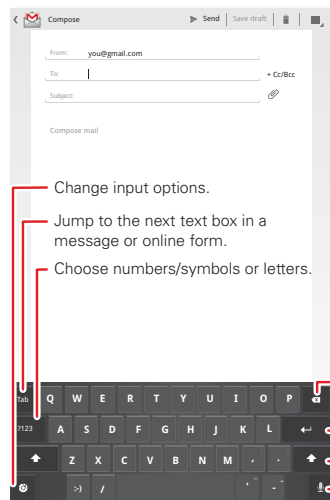


## TYPE

### QUICK START: TYPE

Just touch a text field to open a touch keypad. Touch to close it.

- **Numbers & symbols:** Touch or for numbers or letters.
- **Capital letters:** Touch to enter one capital letter, hold it to enter capitals until you release it or double-tap it to lock capitals until you touch it again.



### TIPS & TRICKS

- **Cut or copy:** Touch and hold text, then touch **Cut** or **Copy** at the top of the screen.
- **Paste:** Touch location to paste, then touch **Paste**.
- **Delete:** Touch (hold to delete more).
- **Input options:** To change input options, touch for capitalisation, correction, learnt words and other options.
- **Accelerate:** Use a dock or Bluetooth™ keyboard and mouse when you want to make your tablet more like a laptop computer. Turn them on and touch **Apps** > **Settings** > **Wireless & networks** > **Bluetooth settings** > **Find devices nearby**. To disconnect the mouse, turn it off. To disconnect the keyboard, touch the keyboard icon in the bottom right of your screen, then drag the touch switch to **Off**.



# MOTOROLA XOOM™ 2 media edition with 4G

LIFE. POWERED.

YOUR TABLET  
START  
TOUCH  
NAVIGATE  
PERSONALISE  
TYPE  
LOAD UP  
SURF  
PLAY & RECORD  
CONTROL  
LOCATE  
EMAIL  
CHAT  
CONTACT  
READ  
WORK  
NOTE  
CONNECT  
PROTECT  
ACCELERATE  
WANT MORE?  
TROUBLESHOOTING  
SAFETY, REGULATORY & LEGAL



More

Support



Back

Next



Load up

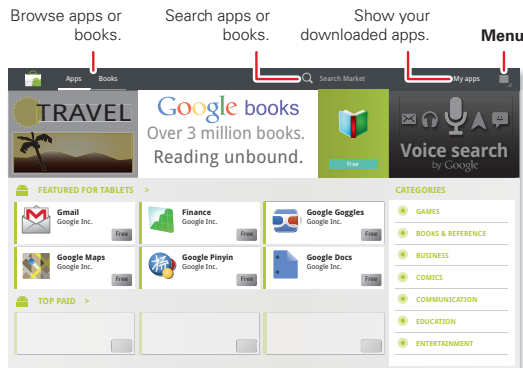
## LOAD UP

### QUICK START: LOAD UP

Your tablet comes with fun games and apps—explore them, and download even more from Android Market™!

**Find it:** **Apps** > **Market**

- **Find:** To find a game or app, touch at the top.
- **Review:** To show the apps you've downloaded from **Market**, touch **My apps**.



### TIPS & TRICKS

- **Help:** To get help and more, touch **Menu** in the top right-hand corner.
- **On a computer:** You can find and manage apps from any computer. Just go to [market.android.com](http://market.android.com) and log in with the email and password for your Google account.
- **Uninstall:** To uninstall your apps from **Market**, touch **My apps**. Touch an app to show the **Uninstall** button.



# MOTOROLA XOOM™ 2 media edition with 4G

LIFE. POWERED.

YOUR TABLET  
START  
TOUCH  
NAVIGATE  
PERSONALISE  
TYPE  
LOAD UP  
SURF  
PLAY & RECORD  
CONTROL  
LOCATE  
EMAIL  
CHAT  
CONTACT  
READ  
WORK  
NOTE  
CONNECT  
PROTECT  
ACCELERATE  
WANT MORE?  
TROUBLESHOOTING  
SAFETY, REGULATORY & LEGAL

## APPS

You can find all of your apps in one place. From the home screen, just touch **Apps** to open the app menu.

- To manage your Android Market™ apps and check for updates, touch **Apps** > **Market** > **My apps**.
- To manage all your apps, touch **Apps** > **Settings** > **Applications** > **Manage applications**.

## ANDROID MARKET™

Get all the apps, games and widgets you want, from developers and authors worldwide. Search and browse for what you need, or check out the latest recommendations. And with so much for free, you're sure to find something. If you need help or have questions about Android Market, touch Menu > **Help**.

**Find it:** **Apps** > **Market**

Touch an app to see details and reviews, then install, buy or try it.

**Tip:** Apps and games will appear in your app menu. Widgets can be added to your home screen.

On your **computer**, you can browse and manage apps for all your Android™ devices at [market.android.com](http://market.android.com).

## CHOOSE CAREFULLY

Apps are great. There's something for everyone. Play, communicate, work or just for fun. But remember, choose your apps carefully. Here are a few tips to help:

- To help prevent spyware, phishing or viruses affecting your tablet or privacy, use apps from trusted sites, like **Market**.

- In Android Market, check the apps' ratings and comments before installing. This will help you choose the best ones for you.
- If you doubt the safety of an app, don't install it.
- Like all apps, downloaded apps will use up memory, data, battery and processing power—some more than others. After installing an app, if you're not happy with how much memory, data, battery or processing power it's using, uninstall it. You can always install it again later.

## RECENT APPS

Your tablet remembers the apps you used most recently. Touch to see your recent apps. Touch an app to open it.

## MANAGE & RESTORE APPS

**Find it:** **Apps** > **Settings** > **Applications** > **Manage applications**

To uninstall a downloaded app, touch **Downloaded**, then the app, then **Uninstall**. To reinstall apps from Android Market™, touch **Apps** > **Market** > **My apps**. Previously installed apps are listed and available for download.

To stop, change settings or manage other options, touch **All** or **Running**. Touch the app, then the option you want.



More

Support



Back

Next



Load up



# MOTOROLA XOOM™ 2 media edition with 4G

LIFE.  POWERED.

YOUR TABLET  
START  
TOUCH  
NAVIGATE  
PERSONALISE  
TYPE  
LOAD UP  
SURF  
PLAY & RECORD  
CONTROL  
LOCATE  
EMAIL  
CHAT  
CONTACT  
READ  
WORK  
NOTE  
CONNECT  
PROTECT  
ACCELERATE  
WANT MORE?  
TROUBLESHOOTING  
SAFETY, REGULATORY & LEGAL

## UPDATE MY TABLET

You can check for, download and install software updates using your tablet or your computer:

- Using your tablet:

You may get an automatic notification of an available update on your tablet. Simply follow the instructions to download and install.

To manually check for updates, touch  **Apps** > 

**Settings** > **About tablet** > **System updates**.

**Note:** To minimise the impact of updating on your data plan, you might want to use a Wi-Fi connection for updates. Updates can be quite large (25 MB or more) or may not be available over the mobile network in some countries.

- Using a computer:

Go to [www.motorola.com/myxoom2](http://www.motorola.com/myxoom2) and check the "Software" links. If an update is available, simply follow the installation instructions.



More

Support



Back

Next



Load up



# MOTOROLA XOOM™ 2 media edition with 4G

LIFE. POWERED.

YOUR TABLET  
START  
TOUCH  
NAVIGATE  
PERSONALISE  
TYPE  
LOAD UP  
SURF  
PLAY & RECORD  
CONTROL  
LOCATE  
EMAIL  
CHAT  
CONTACT  
READ  
WORK  
NOTE  
CONNECT  
PROTECT  
ACCELERATE  
WANT MORE?  
TROUBLESHOOTING  
SAFETY, REGULATORY & LEGAL



More

Support



Back

Next



Surf

## SURF

### QUICK START: SURF

You're surfing on the big screen.

**Find it:** **Apps** > **Browser**

- **Tabs:** Touch to open a new tab, then touch tabs to go to them or touch to close them.
- **Bookmarks:** If you love that website, touch to bookmark it. Touch to open your bookmarks.



Menu

Open bookmarks.

Search

Add a bookmark.

Touch and enter a URL.

Tabs (touch + to add a tab)

Back

Forward

Refresh

### TIPS & TRICKS

- **Touch & hold:** Touch and hold a link or text field for options.
- **Zoom:** To zoom in or out, pinch your fingers together or move them apart on the screen.
- **Search:** To search from the home screen, touch in the top left for a **text** search, or touch for a **voice** search.
- **Share:** To send a website link to a friend, just touch Menu > **Share page**.



# MOTOROLA XOOM™ 2 media edition with 4G

LIFE. POWERED.

YOUR TABLET  
START  
TOUCH  
NAVIGATE  
PERSONALISE  
TYPE  
LOAD UP  
SURF  
PLAY & RECORD  
CONTROL  
LOCATE  
EMAIL  
CHAT  
CONTACT  
READ  
WORK  
NOTE  
CONNECT  
PROTECT  
ACCELERATE  
WANT MORE?  
TROUBLESHOOTING  
SAFETY, REGULATORY & LEGAL



More

Support



Back

Next



Surf

## TABBED BROWSING

You can open several webpages in the same window to multiply your web surfing fun. Touch to open a new tab. To see a webpage, just touch its tab. Touch on a tab to close it.

## SELECT LINKS

Touch a link to go to that webpage. Touch and hold a link to show options, like **Open in a new tab** or **Save link**.

## PLAY WEB VIDEOS

On many webpages, a message or an icon (like ) indicates that a video is available. Touch the link or icon to play the video. Touch the play and pause buttons to control video playback. (If you don't see them, touch the screen.)

## BOOKMARKS

You can save bookmarks to your favourite webpages and navigate to them in seconds. To set a bookmark for the webpage you're on, touch , then **OK**. To go to a bookmarked page, touch , then touch the thumbnail for the page you want.

## DOWNLOADS

To see all of your downloads, touch Menu in the browser's top right corner and choose **Downloads**. Or, just choose **Apps** > **Downloads** from the home screen.

## DOWNLOAD APPS

**Warning:** Apps downloaded from unknown sources can include spyware, phishing or viruses that affect your tablet, tablet performance and personal data.

For security, download apps only from trusted sites like **Apps** > **Market**.

To download apps:

- 1 If you want to allow downloads from any webpage, touch **Apps** > **Settings** > **Applications** > **Unknown sources**.
- 2 To launch the browser, touch **Apps** > **Browser**.
- 3 Find the app you want to download and touch the download link.

**Note:** Downloaded apps are stored in your tablet's memory.

## BROWSER OPTIONS

Touch Menu to see browser options:

Options	
<b>New tab</b>	Open a new tab in the same browser window.
<b>New incognito tab</b>	Open a new blank tab in the browser window to prevent the browser from storing information about your browsing session.
<b>Find on page</b>	Enter & search for a term.
<b>Share page</b>	Share the page URL over a Bluetooth™ connection or in a Gmail™ message.
<b>Page info</b>	View the page URL.
<b>Downloads</b>	View and manage files you downloaded from webpages.
<b>Settings</b>	View & change browser settings.





# MOTOROLA XOOM™ 2 media edition with 4G

LIFE. POWERED.

YOUR TABLET  
START  
TOUCH  
NAVIGATE  
PERSONALISE  
TYPE  
LOAD UP  
SURF  
PLAY & RECORD  
CONTROL  
LOCATE  
EMAIL  
CHAT  
CONTACT  
READ  
WORK  
NOTE  
CONNECT  
PROTECT  
ACCELERATE  
WANT MORE?  
TROUBLESHOOTING  
SAFETY, REGULATORY & LEGAL

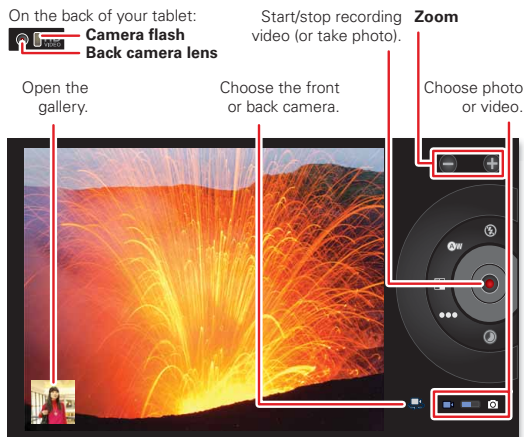
## PLAY & RECORD

### QUICK START: PLAY & RECORD

See it, capture it, share it!

**Find it:** **Apps** > **Camera** or **Music**

- **Photos & videos:** In the camera, touch to take a photo or touch to switch to videos.  
To open photos & videos, touch **Apps** > **Gallery**.
- **Stream and transfer computer files:** See "MOTOCAST".
- **Transfer files:** See "BLUETOOTH™ WIRELESS" or "USB CONNECTION".



### TIPS & TRICKS

- **YouTube™:** To find YouTube videos, touch **Apps** > **YouTube**.  
To upload videos to your account, open YouTube and touch Menu > **Sign in**.
- **Zoom:** To zoom in or out on photos, pinch your fingers together or move them apart on the screen.
- **Camera settings:** In the photo viewfinder, touch to open **Camera settings**.



More

Support



Back

Next



Play & record



# MOTOROLA XOOM™ 2 media edition with 4G

LIFE. POWERED.

YOUR TABLET  
 START  
 TOUCH  
 NAVIGATE  
 PERSONALISE  
 TYPE  
 LOAD UP  
 SURF  
 PLAY & RECORD  
 CONTROL  
 LOCATE  
 EMAIL  
 CHAT  
 CONTACT  
 READ  
 WORK  
 NOTE  
 CONNECT  
 PROTECT  
 ACCELERATE  
 WANT MORE?  
 TROUBLESHOOTING  
 SAFETY, REGULATORY & LEGAL



More

Support



Back

Next



Play & record

## PHOTOS

Take that family photo and post it online for everyone to see.

**Find it:** Apps > Camera.

To take the photo, touch .

**Photo modes**—Get the best photo every time. Just touch a photo mode:

- **Flash:** Set to **Auto**, **On** or **Off**.
- **White balance:** Adjust for lighting conditions.
- **Colour effect:** Pick a cool effect.
- **Scene mode:** Choose your environment.
- **Camera settings:** Choose general settings like **Picture quality**.

After you take the photo, you can touch the thumbnail to open your gallery. Touch the photo to open it:

- **Start a slideshow:** Touch .
- **Share photo:** Touch to send the photo in a message, transfer it using Bluetooth™ wireless or post it online.
- **Delete the photo:** Touch .

Touch Menu , to see details, rotate, crop or set as a contact photo or wallpaper.

## VIDEOS

**Find it:** Apps > Camera > .

To **start** recording, touch . To **stop** recording, touch .

**Video modes**—Get the best video every time. Just touch a video mode:

- **Flash:** Set to **On** or **Off**.

- **White balance:** Adjust for lighting conditions.
- **Colour effect:** Pick a cool effect.
- **Video quality:** Select **High**, **Low** or **YouTube (High, 15m)**.
- **Time lapse interval:** Create a time lapse clip.

After you record the video, you can touch the thumbnail to open your gallery. Touch the video to view options:

- **Play:** Touch .
- **Start a slideshow:** Touch .
- **Share:** Touch to send the video in a message, transfer it using Bluetooth™ wireless or post it online.
- **Delete:** Touch .

## GALLERY

**Find it:** Apps > Gallery

**Tip:** To watch your photo slideshow or recorded HD videos on your HDTV, just connect an HDMI cable from your TV or monitor.

- 1 Choose which photos and videos to show and how you want them listed:
  - **Camera**—All your photos.
  - **By album**—Photos and videos grouped by album.
  - **Images and videos**—Photos only, videos only or both.
- 2 Touch a folder name or tag name, if necessary.  
Touch a photo or video thumbnail to select it for viewing or playback.



# MOTOROLA XOOM™ 2 media edition with 4G

LIFE. POWERED.

YOUR TABLET  
 START  
 TOUCH  
 NAVIGATE  
 PERSONALISE  
 TYPE  
 LOAD UP  
 SURF  
 PLAY & RECORD  
 CONTROL  
 LOCATE  
 EMAIL  
 CHAT  
 CONTACT  
 READ  
 WORK  
 NOTE  
 CONNECT  
 PROTECT  
 ACCELERATE  
 WANT MORE?  
 TROUBLESHOOTING  
 SAFETY, REGULATORY & LEGAL



More

Support



Back

Next



Play & record

Touch the play and pause buttons to control video playback.

**Note:** To see the buttons while the video is playing, touch the screen.

To send a photo or video in a message or post it online, touch and hold the photo or video, then touch **Share**. Choose how you want to share—like **Bluetooth** or **Email**.

## MOTOCAST

**MotoCast** is an exclusive free app from Motorola that lets you stream content between your PC and tablet whenever you have a network connection—music, photos, videos and documents—no separate media tools, apps or cords needed!

- 1 Install **MotoCast** on your computer one of two ways:
  - If you connect your tablet to your computer with a USB-to-micro USB cable, your computer should install **MotoCast** automatically.
  - Or you can download and install **MotoCast** from [www.mymotocast.com](http://www.mymotocast.com)
- 2 On your computer, enter or create your Motorola ID.
- 3 On your tablet, touch **Apps** > **MotoCast**.
- 4 On your tablet, enter your Motorola ID.

**MotoCast** shows you the music, photos and videos stored on your computer.

- 5 Follow the **MotoCast** prompts to stream or download files from your computer — now, you can access your music, photos and videos on your tablet anywhere you have an Internet connection.

## YOUTUBE™ VIDEOS

**Find it:** **Apps** > **YouTube**

Browse, view and search YouTube videos—you don't even need an account. And if you have an account, sign in to keep up to date with **Your Channel**.

**Note:** If you don't have a YouTube account, touch **Your Channel** > **Add account**.

## FIND & WATCH YOUTUBE VIDEOS

To search for a YouTube video, just touch or . Or, browse through popular video categories like **This week**, **Top rated**, **Autos & vehicles**, **Comedy** and more. Touch a video to start playing it. To show a video in high quality, touch **HQ** to the left of the video. To show all videos in high quality, touch Menu > **Settings** > **High quality video on mobile**.

## SHARE VIDEOS

Send someone a link to a video you are watching, touch Menu > **Share**.

## LOG IN OR CREATE ACCOUNT

**Find it:** **Apps** > **YouTube** > Menu > **Sign in**

To create your YouTube account, touch **Add account**.

If you already have a YouTube account, touch **Sign in**.

## UPLOAD VIDEOS

**Find it:** **Apps** > **YouTube** > **Your Channel** > **Upload**

- 1 Touch the video you want to upload. You can change the video title, description, set access rights and add tags.
- 2 Touch **Upload**.



# MOTOROLA XOOM™ 2 media edition with 4G

LIFE. POWERED.

YOUR TABLET  
START  
TOUCH  
NAVIGATE  
PERSONALISE  
TYPE  
LOAD UP  
SURF  
PLAY & RECORD  
CONTROL  
LOCATE  
EMAIL  
CHAT  
CONTACT  
READ  
WORK  
NOTE  
CONNECT  
PROTECT  
ACCELERATE  
WANT MORE?  
TROUBLESHOOTING  
SAFETY, REGULATORY & LEGAL

## YOUR CHANNEL

**Your Channel** is where you can find your uploads, playlists, favourites and subscription. Visit YouTube on the web to learn more about setting up your channel.

## MUSIC

Open your music library, then select what you want to play.

**Find it:** **Apps** > **Music**

To control music playback:

- **Play/pause:** Touch / .
- **Previous/next:** Touch / .
- **Fast forward/rewind:** Touch and hold / .
- **Shuffle:** Touch .
- **Repeat all songs:** Touch .
- **Volume:** Press the side volume keys.

**Tip:** Control music playback from the home screen by adding the music player widget.

To use another app while your music plays, touch Home . To return to the music player, touch in the bottom right-hand corner of your home screen.

To add a song to a playlist, touch > **Add to playlist**. Choose an existing playlist, or touch **New playlist** to create a new playlist. To edit, delete and rename a playlist, touch and hold the playlist.



More

Support



Back

Next



Play & record



# MOTOROLA XOOM™ 2 media edition with 4G

LIFE. POWERED.

YOUR TABLET  
START  
TOUCH  
NAVIGATE  
PERSONALISE  
TYPE  
LOAD UP  
SURF  
PLAY & RECORD  
CONTROL  
LOCATE  
EMAIL  
CHAT  
CONTACT  
READ  
WORK  
NOTE  
CONNECT  
PROTECT  
ACCELERATE  
WANT MORE?  
TROUBLESHOOTING  
SAFETY, REGULATORY & LEGAL

## CONTROL

### QUICK START: CONTROL

The Dijit™ Universal Remote turns your tablet into a remote control with a programme guide, recommendations and social TV features.

**Find it:** Apps > Dijit

- **Universal remote:** Combine remote controls from all your devices into your tablet.



**Menu**

Show the **Guide** for all programmes, **My programmes** that you pick, or **My channel** that you program.

Choose a time to show its schedule in the **Guide**.

Find out more about shows and discuss.

Control your TV or other devices.

## TIPS & TRICKS

- **Device compatibility:** Your tablet has a built-in infrared transmitter. Dijit uses it to let you set up and control your TV, DVD player, receiver or more than 200,000 other remote control devices.
- **Customise control:** You can customise the universal remote control by moving, adding or deleting buttons. Or, create your own buttons and assign them to any device function—you can enter a gesture, like dragging your fingers, so you don't even have to look.
- **Netflix:** Add items to your Netflix instant queue for immediate viewing
- **Sharing:** Sign into the integrated Facebook™ and Twitter, for quick access to share what you're watching.

Remote control transmitter



Control your TV or other devices.



More

Support



Back

Next



Control



# MOTOROLA XOOM™ 2 media edition with 4G

LIFE. POWERED.

YOUR TABLET  
START  
TOUCH  
NAVIGATE  
PERSONALISE  
TYPE  
LOAD UP  
SURF  
PLAY & RECORD  
CONTROL  
LOCATE  
EMAIL  
CHAT  
CONTACT  
READ  
WORK  
NOTE  
CONNECT  
PROTECT  
ACCELERATE  
WANT MORE?  
TROUBLESHOOTING  
SAFETY, REGULATORY & LEGAL

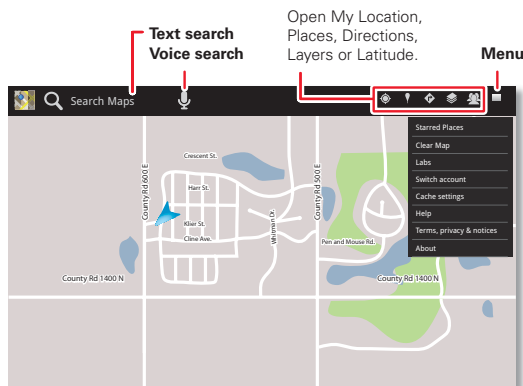
## LOCATE

### QUICK START: LOCATE

Use the Google Maps™ you know and love.

**Find it:** **Apps** > **Maps**

- **Your location:** To show your location, touch at the top. The is your location.
- **Map mode:** To show map layers, touch at the top.



### TIPS & TRICKS

- **Find a location:** Touch at the top and enter an address, city or business in the search box.
- **Get directions:** Touch at the top. Enter start and end points, or touch and select **My current location**, **Contacts** or **Points on map**.
- **Rotate, tilt & zoom:** To rotate or zoom a map, drag two fingers apart or turn them on the display. To tilt a map, drag two fingers down on the display.
- **Compass mode:** Centre the map on your location, then touch the compass icon at the top to switch to a 3D mode that turns as you do.
- **Conserve battery (4G devices):** To conserve battery power (but find your location with less accuracy), set the tablet to use the mobile network. Touch **Apps** > **Settings** > **Location & security**. In **My Location**, select **Use wireless networks** and deselect **Use GPS satellites**.

### SET YOUR LOCATION SOURCES

Set your tablet to determine your location using GPS satellite signals (highly accurate, but uses battery power) or using the mobile network (less accurate, but conserves battery power).

To set your location, touch **Apps** > **Settings** > **Location & security** > **Use GPS satellites** and/or **Use wireless networks**.



More

Support



Back

Next



Locate



# MOTOROLA XOOM™ 2 media edition with 4G

LIFE. POWERED.

YOUR TABLET  
START  
TOUCH  
NAVIGATE  
PERSONALISE  
TYPE  
LOAD UP  
SURF  
PLAY & RECORD  
CONTROL  
LOCATE  
EMAIL  
CHAT  
CONTACT  
READ  
WORK  
NOTE  
CONNECT  
PROTECT  
ACCELERATE  
WANT MORE?  
TROUBLESHOOTING  
SAFETY, REGULATORY & LEGAL



More



Back



Locate

Support



Next



## GOOGLE MAPS NAVIGATION™ BETA

**Find it:** **Apps** > **Navigation**

Get spoken turn-by-turn directions to the destination you specify. Speak or type your destination, or touch a destination in the **Recent Destinations** list.

- Touch **Follow the route** to see route details. In the detailed view, touch to see text directions.
- Touch Menu > **Layers** to set the map view.
- Touch Menu > **Layers** and select points of interest like **Parking** or **Petrol Stations**. Then touch Menu > **Route Info** to view them on maps or directions.

**Note:** Using a mobile device or accessory while driving may cause distraction and may be illegal. Always obey the laws and drive safely.

## GOOGLE LATITUDE™

**Find it:** **Apps** > **Latitude**

### JOIN GOOGLE LATITUDE

Keep track of where your friends and family are on Latitude. Plan to meet up, check that your parents got home safely or just stay in touch.

Don't worry, your location is not shared unless you agree to it. You need to join Google Latitude, and then invite your friends to view your location or accept their invitations. When using Maps (in any mode except in Street View), touch Menu > **Join Latitude**. Read the privacy policy and if you agree with it, touch **Agree & share**.

### ADD & REMOVE FRIENDS

To add friends:

- 1 Touch to show your friends list.

- 2 Touch .

- 3 Touch **Select from Contacts**, then touch a contact. Or, touch **Add via email address**, then enter an email address.

- 4 Touch **Add friends**.

If your friends already use Latitude, they'll receive an email request and a notification. If they have not yet joined Latitude, they'll receive an email request that invites them to sign in to Latitude with their Google account.

To remove friends:

- 1 Touch to show your friends list.
- 2 Touch **X** next to the name you want to delete.

### SHARE LOCATION

When you receive a request to share location details you can choose to:

- **Accept and share back:** See your friend's location, and your friend can see yours.
- **Accept, but hide my location:** See your friend's location, but they can't see yours.
- **Don't accept:** Location information is not shared between you and your friend.

### HIDE YOUR LOCATION

To hide your location, touch Menu > **Settings** > **Hide your location**.



# MOTOROLA XOOM™ 2 media edition with 4G

LIFE. POWERED.

YOUR TABLET  
 START  
 TOUCH  
 NAVIGATE  
 PERSONALISE  
 TYPE  
 LOAD UP  
 SURF  
 PLAY & RECORD  
 CONTROL  
 LOCATE  
 EMAIL  
 CHAT  
 CONTACT  
 READ  
 WORK  
 NOTE  
 CONNECT  
 PROTECT  
 ACCELERATE  
 WANT MORE?  
 TROUBLESHOOTING  
 SAFETY, REGULATORY & LEGAL



More



Back



Email

Support



Next



## EMAIL

### QUICK START: EMAIL

Keep in touch with friends and colleagues.

**Find it:** **Apps** > **Email** or **Gmail**

- **Add accounts:** Touch **Apps** > **Settings** > **Accounts & sync**, then touch **Add account** in the top right. For Microsoft® Exchange work accounts, choose **Corporate** and enter settings from your IT department.



#### Menu

- Check for new messages.
- Create a message.
- Search messages.

#### Messages

#### Message labels

\*Star\* a message to follow up later. To show starred messages, touch the **Starred** message label.

Choose multiple messages, then choose an action at the top of the screen.

### TIPS & TRICKS

- **Keypad:** Touch a text field to open the touchscreen keypad.
- **Drag or flick:** When you flick a long list of contacts or emails, touch the screen to stop it from scrolling.
- **Social networking:** Get Facebook™, Twitter and lots more. Visit Android Market™ to grab the latest official apps and widgets, and see what everyone is up to. Touch **Apps** > **Market**.

### READ & REPLY TO EMAIL MESSAGES

**Find it:** **Apps** > **Email**

Touch a message to open it and all of its replies.

- **Respond to a message:** Touch to reply or to reply to all.
- **Forward a message:** Touch .
- **Open options:** Touch Menu .
- **View attachments:** Touch **View**.

### CREATE EMAIL MESSAGES

**Find it:** **Apps** > **Email** or **Gmail**

Touch , then, enter the recipient and message. Touch to add attachments.

**Tip:** When you enter text in the **To:** field, your tablet shows possible matches from your **Contacts** list, if any exist.

### RECEIVE & OPEN EMAIL ATTACHMENTS

When you receive a message with an attachment, you'll see the attachment as a thumbnail. Touch **View** or **Save**.

**Tip:** To send and receive large attachments faster, use a Wi-Fi connection, in "Wi-Fi networks".





# MOTOROLA XOOM™ 2 media edition with 4G

LIFE.  POWERED.

YOUR TABLET  
START  
TOUCH  
NAVIGATE  
PERSONALISE  
TYPE  
LOAD UP  
SURF  
PLAY & RECORD  
CONTROL  
LOCATE  
EMAIL  
CHAT  
CONTACT  
READ  
WORK  
NOTE  
CONNECT  
PROTECT  
ACCELERATE  
WANT MORE?  
TROUBLESHOOTING  
SAFETY, REGULATORY & LEGAL



More

Support



Back



Next



Email

## SET UP EMAIL

The first time you turned on your tablet, you logged into your Gmail account.

To add other email accounts, touch  **Apps** >  **Settings** > **Accounts & sync** > **Add account**.

- **Corporate** is for Exchange server work email accounts. Enter details from your IT administrator.



**Tip:** You might need to enter your domain name with your username (like *domain/username*).

- **Email** is for most personal email accounts. For account details, contact the account provider.
- **Google** is for adding another Gmail account.



## SYNCHRONISE EMAIL, CONTACTS & CALENDAR

When you first logged into your Gmail account on your tablet, you were automatically given access to the same personal information (emails, events and contacts) that you have on a computer using Gmail, Google Calendar™ and Contacts.

If you use Microsoft Office Outlook on your work computer, your tablet can synchronise emails, events and contacts with your Microsoft Exchange server.

To automatically sync your applications data, touch  **Apps** >  **Settings** > **Accounts & sync** > **Add account** > **Auto-sync**.

To select which apps to synchronise:

- 1 Touch  **Apps** >  **Settings** > **Accounts & sync** > **Add account**.
- 2 If necessary, touch **Auto-sync** to turn it off.
- 3 Touch an account under **Manage accounts** to see its list of apps.



# MOTOROLA XOOM™ 2 media edition with 4G

LIFE. POWERED.

YOUR TABLET  
START  
TOUCH  
NAVIGATE  
PERSONALISE  
TYPE  
LOAD UP  
SURF  
PLAY & RECORD  
CONTROL  
LOCATE  
EMAIL  
CHAT  
CONTACT  
READ  
WORK  
NOTE  
CONNECT  
PROTECT  
ACCELERATE  
WANT MORE?  
TROUBLESHOOTING  
SAFETY, REGULATORY & LEGAL



More

Support



Back

Next



Chat

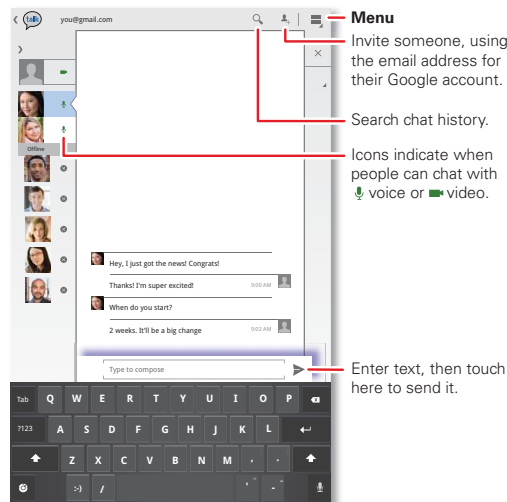
## CHAT

### QUICK START: CHAT

Try video calls or a quick voice chat.

**Find it:** **Apps** > **Talk** and sign in or select your Google account.

- **Invite a friend:** Touch in the top right, then enter the email address for a friend's Google account. They'll receive the invitation when they sign into Google Talk™.
- **Start a text chat:** Touch a name in your list of friends, then enter text and touch .



### TIPS & TRICKS

- **Voice and video chat:** Icons in your friend list tell you when friends are available to video chat, voice chat or are offline.
- **Chat from a computer:** You can chat from a computer, too. Find out more at [www.google.com/talk](http://www.google.com/talk).



# MOTOROLA XOOM™ 2 media edition with 4G

LIFE. POWERED.

YOUR TABLET  
START  
TOUCH  
NAVIGATE  
PERSONALISE  
TYPE  
LOAD UP  
SURF  
PLAY & RECORD  
CONTROL  
LOCATE  
EMAIL  
CHAT  
CONTACT  
READ  
WORK  
NOTE  
CONNECT  
PROTECT  
ACCELERATE  
WANT MORE?  
TROUBLESHOOTING  
SAFETY, REGULATORY & LEGAL



More



Back



Contact

Support



Next



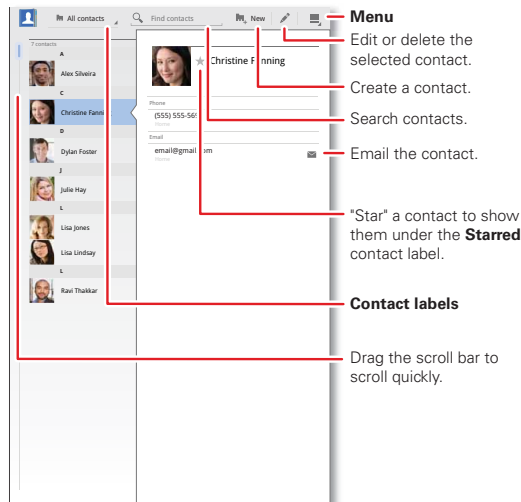
## CONTACT

### QUICK START: CONTACT

Sync and back up your contacts with your Google account.

**Find it:** **Apps** > **Contacts**

- **Create:** Touch **New** (and choose an account if you have more than one). Enter details, then touch **Done** to save.
- **Edit or Delete:** Touch the contact, then touch . Edit the contact, or touch **Menu** > **Delete contact**.



### TIPS & TRICKS

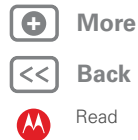
- **Add detail:** When entering contact details, touch / to see more/less detail for a field. Touch / to add or subtract a field. Touch **Add another field** to add more fields.
- **Join contacts:** You might have two contacts for the same person, such as a friend with two email addresses. To combine these, touch one contact, touch **Menu** > **Join**, then touch the second contact.
- **Synchronise contacts:** You can synchronise your tablet with the contacts from your email accounts. Touch **Apps** > **Settings** > **Accounts & sync**. Then, turn on **Auto-sync**, touch an account and turn on **Sync contacts**.



# MOTOROLA XOOM™ 2 media edition with 4G

LIFE. POWERED.

**YOUR TABLET**  
**START**  
**TOUCH**  
**NAVIGATE**  
**PERSONALISE**  
**TYPE**  
**LOAD UP**  
**SURF**  
**PLAY & RECORD**  
**CONTROL**  
**LOCATE**  
**EMAIL**  
**CHAT**  
**CONTACT**  
**READ**  
**WORK**  
**NOTE**  
**CONNECT**  
**PROTECT**  
**ACCELERATE**  
**WANT MORE?**  
**TROUBLESHOOTING**  
**SAFETY, REGULATORY & LEGAL**



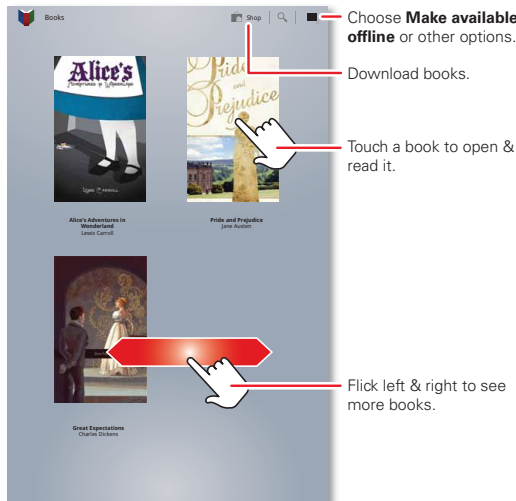
## READ

### QUICK START: READ

Read your favourite books, magazines and newspapers when and where you want.

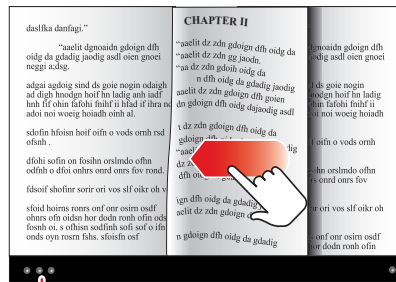
**Find it:** **Apps** > **Books**

- **Open:** Flick left and right to see more books in your library. To open a book, touch it.
- **Read offline:** To store books for reading when you're not connected, touch Menu > **Make available offline**.



## TIPS & TRICKS

- **Turn pages:** While reading the book, turn the pages by flicking them.
- **Recent page:** When you touch the book again on the **Books** home screen, the book opens to the last page you read.
- **Table of contents:** Touch to see the book's table of contents. Touch **Aa** to see book reader settings.
- **Close:** To close a book, touch the bottom navigation panel, then touch in the top left-hand corner.



Touch to show options.

## DOWNLOAD BOOKS

**Find it:** **Apps** > **Books**, then touch **Shop** in the top right.

Browse by category, or touch **Q** and search for a title or author. Touch a book to view more information about it.

Touch **Try** to get a free sample. To buy a book, touch **Buy**. After you confirm the purchase, the book is added to your library.



# MOTOROLA XOOM™ 2 media edition with 4G

LIFE. POWERED.

YOUR TABLET  
START  
TOUCH  
NAVIGATE  
PERSONALISE  
TYPE  
LOAD UP  
SURF  
PLAY & RECORD  
CONTROL  
LOCATE  
EMAIL  
CHAT  
CONTACT  
READ  
WORK  
NOTE  
CONNECT  
PROTECT  
ACCELERATE  
WANT MORE?  
TROUBLESHOOTING  
SAFETY, REGULATORY & LEGAL

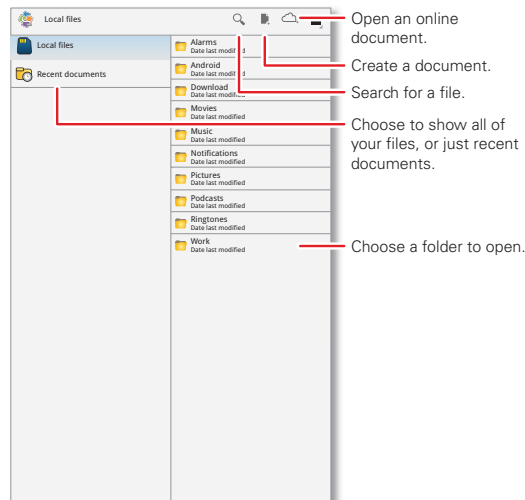
## WORK

### QUICK START: WORK

You can use QuickOffice™ to view and edit files online, or download them to your tablet to work on them anytime.

**Find it:** **Apps** > **QuickOffice HD**

- **Open files:** Touch a file or folder to open it, or touch and hold a file for options. You can edit most text or spreadsheet files:
- **Select text:** Double-touch text to select it.



### TIPS & TRICKS

- **Options:** To open a keyboard, choose formatting, save the file or choose other options touch Menu .
- **Accelerate:** Use a dock or Bluetooth™ keyboard and mouse when you want to make your tablet more like a laptop computer. Turn them on and touch **Apps** > **Settings** > **Wireless & networks** > **Bluetooth settings** > **Find devices nearby**. To disconnect the mouse, turn it off. To disconnect the keyboard, touch the keyboard icon in the bottom right of your screen, then drag the touch switch to **Off**.

### GOOGLE DOCS™

Google Docs lets you create and share documents on the web and access them from any computer, tablet or smart phone. The familiar desktop feel makes collaborative editing easy. Touch **Apps** > **Docs**.

- **Create:** To create a new doc, touch in the top right-hand corner.
- **Search:** To search across all of your docs, touch in the top right-hand corner.
- **Share:** Edit documents with others and see changes as they type.
- **Import:** Easily move documents between desktop applications and Google Docs.
- **Help:** For help or more information on Google Docs, visit [docs.google.com/support](http://docs.google.com/support).



More

Support



Back

Next



Work



# MOTOROLA XOOM™ 2 media edition with 4G

LIFE. POWERED.

YOUR TABLET  
START  
TOUCH  
NAVIGATE  
PERSONALISE  
TYPE  
LOAD UP  
SURF  
PLAY & RECORD  
CONTROL  
LOCATE  
EMAIL  
CHAT  
CONTACT  
READ  
WORK  
NOTE  
CONNECT  
PROTECT  
ACCELERATE  
WANT MORE?  
TROUBLESHOOTING  
SAFETY, REGULATORY & LEGAL



More

Support



Back

Next



Work

## CLOCK & ALARM

**Find it:** Apps > Clock

To add an alarm, touch **Set**, then enter alarm details.

When an alarm sounds, touch to **Dismiss** to turn it off or

**Snooze** to delay for ten minutes.

## CALENDAR

**Find it:** Apps > Calendar

View your calendar events from all of your accounts, all in one place. Your calendar events can be viewed in different ways: Touch **Day**, **Week** or **Month**. When you highlight an event, more details appear.

### ADD CALENDAR EVENTS

From any view, touch . Enter the event start time and other details. You can even set a reminder so you don't forget about the event.

When you finish entering event details, touch **Done**.

### MANAGE CALENDAR EVENTS

To edit an event, touch and hold it, then touch **Details**.

To delete an event, touch and hold it, then touch **Delete**.

To go to today, touch **Today**.

## FLIGHT MODE

Use flight mode to turn all your wireless connections off—useful when flying. Touch the bottom right corner of the screen, then touch > **Flight mode**.



# MOTOROLA XOOM™ 2 media edition with 4G

LIFE. POWERED.

YOUR TABLET  
START  
TOUCH  
NAVIGATE  
PERSONALISE  
TYPE  
LOAD UP  
SURF  
PLAY & RECORD  
CONTROL  
LOCATE  
EMAIL  
CHAT  
CONTACT  
READ  
WORK  
NOTE  
CONNECT  
PROTECT  
ACCELERATE  
WANT MORE?  
TROUBLESHOOTING  
SAFETY, REGULATORY & LEGAL



More



Back



Note

Support



Next



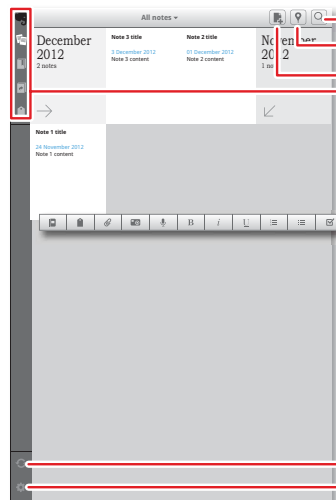
## NOTE

### QUICK START: NOTE

Capture all of your thoughts, ideas and inspirations, into a single place, and access them from your computer.

**Find it:** **Apps** > **Evernote**

- **Create:** To create a new note, touch in the top right-hand corner.
- **Search:** To search across all of your notes, touch in the top right-hand corner.



#### Search

Note your location.

Create a note.

Show your notes, notebooks, shared notes or tags.

When you create a note, touch icons at the bottom to choose formatting or attachments.

Synchronise shared notes.

Change settings.

## TIPS & TRICKS

- **Cancel:** To close a new note without saving it, touch **X** in the top left.
- **Settings:** To change your Evernote® account settings, touch Settings in the bottom left.
- **On a computer:** To find out more, or download Evernote® for your computer, visit [www.evernote.com](http://www.evernote.com).



# MOTOROLA XOOM™ 2 media edition with 4G

LIFE. POWERED.

YOUR TABLET  
START  
TOUCH  
NAVIGATE  
PERSONALISE  
TYPE  
LOAD UP  
SURF  
PLAY & RECORD  
CONTROL  
LOCATE  
EMAIL  
CHAT  
CONTACT  
READ  
WORK  
NOTE  
CONNECT  
PROTECT  
ACCELERATE  
WANT MORE?  
TROUBLESHOOTING  
SAFETY, REGULATORY & LEGAL



More

Support



Back

Next



Connect

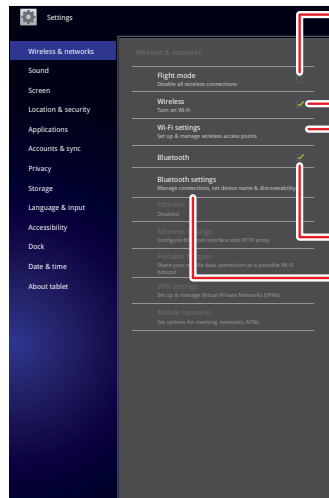
## CONNECT

### QUICK START: CONNECT

Accessories, phone, PC, hotspot and network—connect.

**Find it:** Apps > Settings > **Wireless & networks**

- **Bluetooth™ devices:** To connect a Bluetooth headset, keypad or other device, touch **Bluetooth settings**.
- **Wi-Fi networks:** To connect, touch **Wi-Fi settings**.
- **Hotspot (4G tablets):** Share your Internet connection. Touch **Tethering & portable hotspot**.



Use **Flight mode** to quickly disable all wireless connections.

Turn on Wi-Fi power.

Change Wi-Fi settings, or connect new networks.

Turn on Bluetooth power.

Change Bluetooth settings or connect new devices.

### TIPS & TRICKS

- **HDMI® cable:** Your tablet's HDMI port lets you connect it to other HDMI devices to view photos or videos.
- **USB cable:** To load music, pictures, videos, documents or other files from your computer, connect your tablet to your computer with a USB cable.
- **Conserve battery:** To conserve battery power or stop connections, turn off Bluetooth power and Wi-Fi power. Turn them off and on to search for connections.
- **Automatic connections:** When Bluetooth or Wi-Fi power is on, your tablet automatically reconnects to available devices or networks it has used before.

## BLUETOOTH™ WIRELESS

### TURN BLUETOOTH POWER ON OR OFF

**Find it:** Apps > Settings > **Wireless & networks** > **Bluetooth**

**Tip:** To extend battery life or stop connections, turn off Bluetooth power: Touch Apps > Settings > **Wireless & networks** > **Bluetooth**.

**Note:** The Bluetooth enhanced audio setting is not recommended for older Bluetooth headsets as it may not deliver acceptable sound quality.

### CONNECT DEVICES

The first time you connect a device, follow the steps below (to disconnect or reconnect the device, turn it off or on).

- 1 Make sure the device you are pairing with is in discoverable mode.

**Note:** Refer to the guide that came with the device for details.





# MOTOROLA XOOM™ 2 media edition with 4G

LIFE. POWERED.

YOUR TABLET  
START  
TOUCH  
NAVIGATE  
PERSONALISE  
TYPE  
LOAD UP  
SURF  
PLAY & RECORD  
CONTROL  
LOCATE  
EMAIL  
CHAT  
CONTACT  
READ  
WORK  
NOTE  
CONNECT  
PROTECT  
ACCELERATE  
WANT MORE?  
TROUBLESHOOTING  
SAFETY, REGULATORY & LEGAL



More



Back



Connect

Support



Next



2 Touch **Apps** > **Settings** > **Wireless & networks** > **Bluetooth settings**.

3 Touch **Bluetooth** to turn on Bluetooth power, if necessary.

4 Touch **Find devices nearby**.

5 Touch a device to connect.

**Tip:** You can touch a device name here to disconnect or reconnect it.

6 If necessary, touch **Pair**, or enter the device passkey (like 0000) to connect to the device. When the device is connected, the Bluetooth indicator appears in the status panel.

**Note:** Using a mobile device or accessory while driving may cause distraction and may be illegal. Always obey the laws and drive safely.

## LET DEVICES FIND YOUR TABLET

To allow a Bluetooth device to discover your tablet:

1 Touch **Apps** > **Settings** > **Wireless & networks** > **Bluetooth settings**.

2 Touch **Bluetooth** to turn on Bluetooth power, if necessary.

3 Touch **Discoverable**.

## TRANSFER FILES

- **Photos or videos:** Open the photo or video, then touch touch > **Bluetooth**.

- **Contacts:** Touch **Apps** > **Contacts**, touch a contact, then touch Menu > **Share contact** > **Bluetooth**.

## WI-FI NETWORKS

### TURN WI-FI POWER ON OR OFF

**Find it:** **Apps** > **Settings** > **Wireless & networks** > **Wi-Fi**

**Note:** To extend battery life, turn off Wi-Fi when not in use.

### CONNECT TO NETWORKS

To find networks in your range:

1 Touch **Apps** > **Settings** > **Wireless & networks** > **Wi-Fi settings**.

2 Touch **Wi-Fi** to turn on and scan. If Wi-Fi is already on, touch Menu > **Scan**. Your tablet lists the networks it finds within range.

**Tip:** To see your tablet's MAC address or other Wi-Fi details, touch Menu > **Advanced**.

3 Touch a network to connect.

4 If necessary, enter **Network SSID**, **Security** and **Wireless password** and touch **Connect**. When your tablet is connected to the network, the wireless indicator appears in the status bar.

**Tip:** When Wi-Fi power is on, your tablet automatically reconnects to available networks it has used before

## WI-FI HOTSPOT

**Note:** Wi-Fi-only devices don't have this feature.

You can make your tablet a Wi-Fi hotspot to provide portable, convenient Internet access to other Wi-Fi enabled devices.

**Note:** Keep it secure. To protect your tablet and hotspot from unauthorised access, it is strongly recommended that you set up hotspot security (WPA2 is the most secure), including password.



# MOTOROLA XOOM™ 2 media edition with 4G

LIFE. POWERED.

YOUR TABLET  
START  
TOUCH  
NAVIGATE  
PERSONALISE  
TYPE  
LOAD UP  
SURF  
PLAY & RECORD  
CONTROL  
LOCATE  
EMAIL  
CHAT  
CONTACT  
READ  
WORK  
NOTE  
CONNECT  
PROTECT  
ACCELERATE  
WANT MORE?  
TROUBLESHOOTING  
SAFETY, REGULATORY & LEGAL



More



Back



Connect

Support



Next



To set up your tablet as a Wi-Fi hotspot:

- 1 Turn off Wi-Fi power by touching **Apps** > **Settings** > **Wireless & networks** > **Wi-Fi**.
- 2 Touch **Apps** > **Settings** > **Wireless & networks** > **Tethering & portable hotspot**.
- 3 Touch **Wi-Fi hotspot** to turn on the hotspot.
- 4 Touch **Portable Wi-Fi hotspot** to change hotspot security and configuration:
  - **Network SSID**—Enter a unique name for your hotspot and touch **Next**.
  - **Security**—Select **Open** or **WPA2 PSK**. If you select **WPA2 PSK**, enter a unique password. Other users can access your Wi-Fi hotspot only if they enter the correct password.
- 5 Touch **Save** when the settings are complete.

When your Wi-Fi Hotspot is active, other Wi-Fi-enabled devices can connect by entering your Hotspot's **SSID**, selecting a **Security** type, and entering the correct **Wireless password**.

## USB CONNECTION

**Note:** Copyright—do you have the right? Always follow the rules. See "**CONTENT COPYRIGHT**".

To load music, pictures, videos, documents or other files from your computer, connect your tablet to your computer with a USB cable.

- For Microsoft™ Windows™ XP, Windows Vista and Windows 7: On your computer, choose Start, then select Windows Explorer from your list of programs. In Windows Explorer, your tablet will appear as a connected drive (mass storage device) where you can drag and drop files, or it will appear as an MTP device

that lets you use Windows Media Player to transfer files. For more instructions or driver files, visit [www.motorola.com/myxoom2](http://www.motorola.com/myxoom2).

- For Apple™ Macintosh™: Use Android File Transfer, available at [www.android.com/filetransfer](http://www.android.com/filetransfer).

## PHONE NETWORK

**Note:** Wi-Fi-only devices don't have this feature.

You should not need to change any network settings. For help, contact your service provider.

Touch **Apps** > **Settings** > **Wireless & networks** > **Mobile networks** to show options for roaming networks, network selection, operator selection and access point names.



# MOTOROLA XOOM™ 2 media edition with 4G

LIFE. POWERED.

YOUR TABLET  
START  
TOUCH  
NAVIGATE  
PERSONALISE  
TYPE  
LOAD UP  
SURF  
PLAY & RECORD  
CONTROL  
LOCATE  
EMAIL  
CHAT  
CONTACT  
READ  
WORK  
NOTE  
CONNECT  
PROTECT  
ACCELERATE  
WANT MORE?  
TROUBLESHOOTING  
SAFETY, REGULATORY & LEGAL



More

Support



Back

Next



Protect

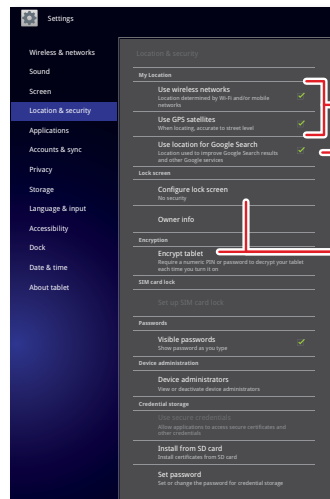
## PROTECT

### QUICK START: PROTECT

You can help protect your tablet, and your information.

**Find it:** Apps > Settings > Location & security

- **Lock screen:** Your tablet can lock whenever the screen times out. Touch Apps > Settings > Location & security > Configure lock screen.
- **Forgotten pattern or passcode:** If you forget your pattern or passcode, see your service provider.



Choose how your tablet determines your location.

When you search on a business or product, the results can highlight places nearby.

Add a screen lock or encryption for security.

### TIPS & TRICKS

- **Screen timeout:** To change how long your screen waits before it goes dark, touch Apps > Settings > Screen > Timeout.
- **Personal data:** Check out other ways to protect your data — touch Apps > Settings > Privacy.



# MOTOROLA XOOM™ 2 media edition with 4G

LIFE. POWERED.

YOUR TABLET  
START  
TOUCH  
NAVIGATE  
PERSONALISE  
TYPE  
LOAD UP  
SURF  
PLAY & RECORD  
CONTROL  
LOCATE  
EMAIL  
CHAT  
CONTACT  
READ  
WORK  
NOTE  
CONNECT  
PROTECT  
ACCELERATE  
WANT MORE?  
TROUBLESHOOTING  
SAFETY, REGULATORY & LEGAL

## ACCELERATE

### GENERAL TIPS

- If you can't see the screen while wearing sunglasses, take them off. Screen brightness changes as your tablet senses the current lighting conditions.
- To return to home screen, touch Home .
- To sleep/wake your tablet, press Power/Sleep .
- To search, touch Search .
- To show the last few apps, touch .
- To change volume, notification tones and other sound settings, touch **Apps** > **Settings** > **Sound**.
- To manage apps—stop, change settings, manage other options—touch **Apps** > **Settings** > **Applications** > **Manage applications**.

### BATTERY TIPS

Want to extend your battery life? Try these:

- To turn off Bluetooth™ power when you don't need it, touch **Apps** > **Settings** > **Wireless & networks** > **Bluetooth**.
- To turn off Wi-Fi, touch **Apps** > **Settings** > **Wireless & networks** > **Wi-Fi**.
- Determine location using less battery (but with lower accuracy). Touch **Apps** > **Settings** > **Location & security**. Under **My Location**, select **Use wireless networks** and deselect **Use GPS satellites**.
- To set screen timeout or change screen brightness, touch **Apps** > **Settings** > **Screen**.

## ACCESSIBILITY

See, hear, speak and use. Accessibility features are there for everyone, making things easier.

**Note:** For general information, accessories and more, visit [www.motorola.com/accessibility](http://www.motorola.com/accessibility).

### VOICE ACTIONS

Voice Actions let you control your tablet using your voice. Send messages, browse the web, listen to music and more—any number of apps can be activated with Voice actions. Just touch **Apps** > **Voice search**. Then say what you want your tablet to do:

- "Show map of Chicago, Illinois."
- "Navigate to 433 West 3rd Street, Dover, Ohio."
- "Go to the New York Gazette."
- "Email to Joseph Jones. Meet me at the deli for lunch."
- "Listen to Mozart."

Go ahead, try it for yourself. If you want more help, touch **Apps** > **Voice search** and say "help".

### VOICE READOUTS

To turn on voice readouts, touch **Apps** > **Settings** > **Accessibility** > **Accessibility**, then select an option:

- Talkback: The tablet speaks out loud to describe each action you complete.
- SoundBack: Play a sound to confirm your action, you signal a change of tablet status or alert you to notifications.
- Download accessibility scripts: Allow applications to download accessibility scripts from Google.



More

Support



Back

Next



Accelerate



# MOTOROLA XOOM™ 2 media edition with 4G

LIFE.  POWERED.

YOUR TABLET  
START  
TOUCH  
NAVIGATE  
PERSONALISE  
TYPE  
LOAD UP  
SURF  
PLAY & RECORD  
CONTROL  
LOCATE  
EMAIL  
CHAT  
CONTACT  
READ  
WORK  
NOTE  
CONNECT  
PROTECT  
ACCELERATE  
WANT MORE?  
TROUBLESHOOTING  
SAFETY, REGULATORY & LEGAL



More

Support



Back

Next





Accelerate




## ZOOM

Get a closer look. To zoom in, double tap the screen or touch the screen with two fingers and then slide them apart. To zoom out, double tap the screen again or drag your fingers together.

## DISPLAY BRIGHTNESS

Set a brightness level that works for you. Touch  **Apps** >  **Settings** > **Screen** > **Brightness**. Make sure that **Automatic brightness** is deselected so you can set your own level.


## MESSAGES

To make text entry easier, you can use features like auto-capitalisation, auto-correction and show correction suggestions—touch  **Apps** >  **Settings** > **Language & input** > **Configure input methods** > **Settings**. Of course, if you don't want to type at all, then use your voice—touch  on the touchscreen keypad.

## APPS

Want more? No problem. Android Market™ provides access to thousands of apps and many provide useful accessibility features.

**Find it:**  **Apps** >  **Market**

Select a category or touch Search  to find the app you want.

**Tip:** Choose your apps carefully, from trusted sites like Android Market™, as some may have an impact on your tablet's performance.



# MOTOROLA XOOM™ 2 media edition with 4G

LIFE. POWERED.

YOUR TABLET  
START  
TOUCH  
NAVIGATE  
PERSONALISE  
TYPE  
LOAD UP  
SURF  
PLAY & RECORD  
CONTROL  
LOCATE  
EMAIL  
CHAT  
CONTACT  
READ  
WORK  
NOTE  
CONNECT  
PROTECT  
ACCELERATE  
WANT MORE?  
TROUBLESHOOTING  
SAFETY, REGULATORY & LEGAL

## WANT MORE?

### MORE INFORMATION

You can get more information, more help, more free stuff. We're here to help.

- **Answers:** Check out the help centre on your tablet—touch **Apps** > **Help centre**.
- **Support:** Tablet software updates, PC software, user guides, online help and more at [www.motorola.com/myxoom2mediaedition](http://www.motorola.com/myxoom2mediaedition). You can call us with warranty and support questions on 0870-9010-555 (UK).
- **Updates:** To keep your tablet current, software updates may be available. Touch **Apps** > **Settings** > **About tablet** > **System updates** to see if your tablet is up to date. If it isn't, touch **Update**.
- **Join us:** Get the latest news, apps, tips & tricks, videos and so much more—join us on:

**YouTube™** [www.youtube.com/motorola](http://www.youtube.com/motorola)

**Facebook™** [www.facebook.com/motorola](http://www.facebook.com/motorola)

**Twitter** [www.twitter.com/motomobile](http://www.twitter.com/motomobile)

### ACCESSORIES

You can find accessories for your tablet at:  
[www.motorola.com/accessories](http://www.motorola.com/accessories).



More

Support



Back

Next



Want more?



# MOTOROLA XOOM™ 2 media edition with 4G

LIFE. POWERED.

YOUR TABLET  
START  
TOUCH  
NAVIGATE  
PERSONALISE  
TYPE  
LOAD UP  
SURF  
PLAY & RECORD  
CONTROL  
LOCATE  
EMAIL  
CHAT  
CONTACT  
READ  
WORK  
NOTE  
CONNECT  
PROTECT  
ACCELERATE  
WANT MORE?  
TROUBLESHOOTING  
SAFETY, REGULATORY & LEGAL



More



Back



Troubleshooting

Support



Next



## TROUBLESHOOTING

### FORCE A REBOOT

In the unlikely event that your tablet becomes unresponsive, try a forced reboot: Press and hold both Power/sleep and the down volume key for more than 12 seconds.

### RESET YOUR TABLET

If you forget your unlock pattern or password, your tablet should prompt you to reset it after five tries. If it doesn't, you can do a factory data reset to restore your tablet to its factory settings:

**Warning:** This deletes all of your data on the tablet. This includes pictures, videos, documents and other files that you have not backed up online or on a PC.

- 1 Turn on your tablet and, when the Motorola logo appears, press and hold the volume down key. Keep holding the volume down key until Android recovery text appears in top left-hand corner.
- 2 Press the volume up key to put the device in Android recovery mode.
- 3 When the Android recovery screen appears, press and hold Power/Sleep . While holding Power/Sleep , press and release the volume up key.
- 4 Your tablet should show a wipe data/factory reset option. Press Power/Sleep to select the reset option.
- 5 Use the volume keys to select **Yes**, then press Power/Sleep to confirm the reset.
- 6 After your tablet resets, press Power/Sleep to select **Reboot system now**.



# MOTOROLA XOOM™ 2 media edition with 4G

LIFE. POWERED.

YOUR TABLET  
START  
TOUCH  
NAVIGATE  
PERSONALISE  
TYPE  
LOAD UP  
SURF  
PLAY & RECORD  
CONTROL  
LOCATE  
EMAIL  
CHAT  
CONTACT  
READ  
WORK  
NOTE  
CONNECT  
PROTECT  
ACCELERATE  
WANT MORE?  
TROUBLESHOOTING  
SAFETY, REGULATORY & LEGAL

## Safety, regulatory & legal

### Battery use & safety

The following battery use and safety information applies to all Motorola mobile devices. If your mobile device uses a non-removable main battery (as stated in your product information), details related to handling and replacing your battery should be disregarded — the battery should only be replaced by a Motorola-approved service facility and any attempt to remove or replace your battery may damage the product.

**Important: Handle and store batteries properly to avoid injury or damage.** Most battery issues arise from improper handling of batteries, and particularly from the continued use of damaged batteries.

#### DON'Ts

- **Don't disassemble, crush, puncture, shred or otherwise attempt to change the form of your battery.**
- **Don't let the mobile device or battery come in contact with liquids.\*** Liquids can get into the mobile device's circuits, leading to corrosion.
- **Don't allow the battery to touch metal objects.** If metal objects, such as jewellery, stay in prolonged contact with the battery contact points, the battery could become very hot.
- **Don't place your mobile device or battery near a heat source.\*** High temperatures can cause the battery to swell, leak or malfunction.
- **Don't dry a wet or damp battery with an appliance or heat source,** such as a hair dryer or microwave oven.

#### DOs

- **Do avoid leaving your mobile device in your car in high temperatures.\***
- **Do avoid dropping the mobile device or battery.\*** Dropping these items, especially on a hard surface, can potentially cause damage.\*
- **Do contact your service provider or Motorola if your mobile device or battery has been damaged by dropping, liquids or high temperatures.**

\* **Note:** Always make sure that the battery compartment and any connector covers are closed and secure to avoid direct exposure of the battery to any of these conditions, even if your product information states that your **mobile device** can resist damage from these conditions.

**Important: Motorola recommends you always use Motorola-branded batteries and chargers for quality assurance and safeguards.** Motorola's warranty does not cover damage to the mobile device caused by non-Motorola batteries and/or chargers. To help you identify authentic Motorola batteries from non-original or counterfeit batteries (that may not have adequate safety protection), Motorola provides holograms on its batteries. You should confirm that any battery you purchase has a "Motorola Original" hologram.

If you see a message on your display such as **Invalid battery** or **Unable to charge**, take the following steps:

- Remove the battery and inspect it to confirm that it has a "Motorola Original" hologram;
- If there is no hologram, the battery is not a Motorola battery;
- If there is a hologram, replace the battery and try charging it again;
- If the message remains, contact a Motorola authorised service centre.

**Warning:** Use of a non-Motorola battery or charger may present a risk of fire, explosion, leakage or other hazard.

**Proper and safe battery disposal and recycling:** Proper battery disposal is not only important for safety, it also benefits the environment. You can recycle your used batteries in many retail or service provider locations. Additional information on proper disposal and recycling can be found at [www.motorola.com/recycling](http://www.motorola.com/recycling)

**Disposal:** Promptly dispose of used batteries in accordance with local regulations. Contact your local recycling centre or national recycling organisations for more information on how to dispose of batteries.



**Warning:** Never dispose of batteries in a fire because they may explode.

## Battery charging

### Notes for charging your product's battery:

- During charging, keep your battery and charger near room temperature for efficient battery charging.
- New batteries are not fully charged.
- New batteries or batteries stored for a long time may take more time to charge.
- Motorola batteries and charging systems have circuitry that protects the battery from damage from overcharging.

## Third party accessories

Use of third party accessories, including but not limited to batteries, chargers, headsets, covers, cases, screen protectors and memory cards, may impact your mobile device's performance. In some circumstances, third party accessories can be dangerous and may void your mobile device's warranty. For a list of Motorola accessories, visit [www.motorola.com/products](http://www.motorola.com/products)

## Driving precautions

Responsible and safe driving is your primary responsibility when behind the wheel of a vehicle. Using a mobile device or accessory while driving may cause distraction and may be prohibited or restricted in certain areas. Always obey the laws and regulations on the use of these products.

### While driving, NEVER:

- Type or read messages.
- Enter or review written data.
- Surf the web.
- Input navigation information.



More

Support



Back

Next



Safety, regulatory & legal





# MOTOROLA XOOM™ 2 media edition with 4G

LIFE. POWERED.

**YOUR TABLET**  
**START**  
**TOUCH**  
**NAVIGATE**  
**PERSONALISE**  
**TYPE**  
**LOAD UP**  
**SURF**  
**PLAY & RECORD**  
**CONTROL**  
**LOCATE**  
**EMAIL**  
**CHAT**  
**CONTACT**  
**READ**  
**WORK**  
**NOTE**  
**CONNECT**  
**PROTECT**  
**ACCELERATE**  
**WANT MORE?**  
**TROUBLESHOOTING**  
**SAFETY, REGULATORY & LEGAL**

- Perform any other functions that divert your attention from driving.
- While driving, ALWAYS:**
- Keep your eyes on the road.
  - Enter destination information into a navigation device **before** driving.
  - Use voice-activated features (such as voice commands) and speaking features (such as audible directions), if available.
  - Obey all local laws and regulations for the use of mobile devices and accessories in the vehicle.
  - End any task if you cannot concentrate on driving.
- Remember to follow the "Sensible practices while driving" in this guide.

## Seizures/blackouts

Some people may be susceptible to epileptic seizures or blackouts when exposed to flashing lights, such as when playing videos or games. These may occur even if a person has never had a previous seizure or blackout.

If you have experienced seizures or blackouts, or if you have a family history of such occurrences, please consult your doctor before playing videos or games or enabling a flashing-lights feature (if available) on your mobile device.

Discontinue use and consult a doctor if any of the following symptoms occur: convulsion, eye or muscle twitching, loss of awareness, involuntary movements or disorientation. It is always a good idea to hold the screen away from your eyes, leave the lights on in the room, take a 15-minute break every hour and stop use if you are tired.

## Caution about high volume usage

**Warning:** Exposure to loud noise from any source for extended periods of time may affect your hearing. The louder the volume sound level, the less time is required before your hearing could be affected. To protect your hearing:

- Limit the amount of time you use headsets or headphones at high volume.
- Avoid turning up the volume to block out noisy surroundings.
- Turn the volume down if you can't hear people speaking near you.

If you experience hearing discomfort, including the sensation of pressure or fullness in your ears, ringing in your ears or muffled speech, you should stop listening to the device through your headset or headphones and get your hearing checked.

For more information about hearing, see our website at [direct.motorola.com/hellomoto/nss/AcousticSafety.asp](http://direct.motorola.com/hellomoto/nss/AcousticSafety.asp) (in English only).



## Repetitive motion

When you repetitively perform actions such as pressing keys or entering finger-written characters, you may experience occasional discomfort in your hands, arms, shoulders, neck or other parts of your body. If you continue to have discomfort during or after such use, stop use and see a doctor.

## Children

**Keep your mobile device and its accessories away from small children.** These products are not toys and may be hazardous to small children. For example:

- A choking hazard may exist for small, detachable parts.
- Improper use could result in loud sounds, possibly causing hearing injury.
- Improperly handled batteries could overheat and cause a burn.

Similar to a computer, if a child does use your mobile device, you may want to monitor their access to help prevent exposure to inappropriate apps or content.

## Glass parts

Some parts of your mobile device may be made of glass. This glass could break if the product receives a substantial impact. If glass breaks, do not touch or attempt to remove.

Stop using your mobile device until the glass is replaced by a qualified service centre.

## Operational warnings

Obey all posted signs when using mobile devices in public areas.

## Potentially explosive areas

Potentially explosive areas are often, but not always, posted and can include blasting areas, fuelling stations, fuelling areas (such as below decks on boats), fuel or chemical transfer or storage facilities, or areas where the air contains chemicals or particles, such as grain dust or metal powders.

When you are in such an area, turn your mobile device off, and do not remove, install or charge batteries unless it is a radio product type especially qualified for use in such areas as "Intrinsically Safe" (for example, Factory Mutual, CSA or UL approved). In such areas, sparks can occur and cause an explosion or fire.

## Symbol key

Your battery, charger or mobile device may contain symbols, defined as follows:

Symbol	Definition
	Important safety information follows.
	Do not dispose of your battery or mobile device in a fire.
	Your battery or mobile device may require recycling in accordance with local laws. Contact your local regulatory authorities for more information.



More

Support



Back

Next



Safety, regulatory & legal



# MOTOROLA XOOM™ 2 media edition with 4G

LIFE. POWERED.

**YOUR TABLET**  
**START**  
**TOUCH**  
**NAVIGATE**  
**PERSONALISE**  
**TYPE**  
**LOAD UP**  
**SURF**  
**PLAY & RECORD**  
**CONTROL**  
**LOCATE**  
**EMAIL**  
**CHAT**  
**CONTACT**  
**READ**  
**WORK**  
**NOTE**  
**CONNECT**  
**PROTECT**  
**ACCELERATE**  
**WANT MORE?**  
**TROUBLESHOOTING**  
**SAFETY, REGULATORY & LEGAL**



More

Support



Back

Next



Safety, regulatory & legal

Symbol	Definition
	Do not dispose of your battery or mobile device with your household waste. See "Recycling" for more information.
	Do not use tools.
	For indoor use only.
	Listening at full volume to music or voice through a headset may damage your hearing.

## Radio frequency (RF) energy

### Exposure to RF energy

Your mobile device contains a transmitter and receiver. When it is ON, it receives and transmits RF energy. When you communicate with your mobile device, the system handling your network access controls the power level at which your mobile device transmits. Your mobile device is designed to comply with local regulatory requirements in your country concerning exposure of human beings to RF energy.

### RF energy interference/compatibility

Nearly every electronic device is subject to RF energy interference from external sources if inadequately shielded, designed or otherwise configured for RF energy compatibility. In some circumstances, your mobile device may cause interference with other devices.

### Follow instructions to avoid interference problems

Turn off your mobile device in any location where posted notices instruct you to do so, such as hospitals or healthcare facilities.

In an aircraft, turn off your mobile device whenever instructed to do so by airline staff. If your mobile device offers a flight mode or similar feature, consult airline staff about using it in-flight.

### Medical devices

If you have a medical device, including an implantable medical device such as a pacemaker or defibrillator, consult your healthcare provider and the device manufacturer's directions before using this mobile device.

Persons with implantable medical devices should observe the following precautions:

- ALWAYS keep the mobile device more than 20 centimetres (8 inches) from the implantable medical device when the mobile device is turned ON.
- Turn OFF the mobile device immediately if you have any reason to suspect that interference is taking place.

Read and follow the directions from the manufacturer of your implantable medical device. If you have any questions about using your mobile device with your implantable medical device, consult your health care provider.

## Specific absorption rate (ICNIRP)

### YOUR MOBILE DEVICE MEETS INTERNATIONAL GUIDELINES FOR EXPOSURE TO RADIO WAVES.

Your mobile device is a radio transmitter and receiver. It is designed not to exceed the limits for exposure to radio waves (radio frequency electromagnetic fields) recommended by international guidelines. The guidelines were developed by an independent scientific organisation (ICNIRP) and include a substantial safety margin designed to assure the safety of all persons, regardless of age and health.

The radio wave exposure guidelines use a unit of measurement known as the Specific absorption rate, or SAR. The SAR limit for mobile devices is 2 W/kg.

Tests for SAR are conducted using standard operating positions with the device transmitting at its highest certified power level in all tested frequency bands\*. The highest SAR value under the ICNIRP guidelines for your device model is listed below:

Body SAR	Wi-Fi, Bluetooth	0.51 W/kg
----------	------------------	-----------

During use, the actual SAR values for your device are usually well below the values stated. This is because, for purposes of system efficiency and to minimise interference on the network, the operating power of your mobile device is automatically decreased when full power is not needed for the wireless connection. The lower the power output of the device, the lower its SAR value.

If you are interested in further reducing your RF exposure then you can easily do so by limiting your usage or simply using a hands-free kit to keep the device away from the head and body.

Additional information can be found at [www.motorola.com/rfhealth](http://www.motorola.com/rfhealth).

\* The tests are carried out in accordance with [CENELEC EN50360] [IEC standard PT62209-1].



# MOTOROLA XOOM™ 2 media edition with 4G

LIFE. POWERED.

**YOUR TABLET**  
**START**  
**TOUCH**  
**NAVIGATE**  
**PERSONALISE**  
**TYPE**  
**LOAD UP**  
**SURF**  
**PLAY & RECORD**  
**CONTROL**  
**LOCATE**  
**EMAIL**  
**CHAT**  
**CONTACT**  
**READ**  
**WORK**  
**NOTE**  
**CONNECT**  
**PROTECT**  
**ACCELERATE**  
**WANT MORE?**  
**TROUBLESHOOTING**  
**SAFETY, REGULATORY & LEGAL**

## European Union directives conformance statement

The following CE compliance information is applicable to Motorola mobile devices that carry one of the following CE marks:

CE 0168

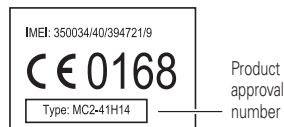
CE 0168

[Only indoor use allowed in France for Bluetooth and/or Wi-Fi]

Hereby, Motorola declares that this product is in compliance with:

- The essential requirements and other relevant provisions of directive 1999/5/EC
- All other relevant EU directives

For products that support Wi-Fi 802.11a (as defined in your product information): This device is restricted to indoor use when operating in the 5.15 to 5.25 GHz (802.11a) Wi-Fi frequency band.



The above gives an example of a typical product approval number.

You can view your product's Declaration of Conformity (DoC) to Directive 1999/5/EC (to R&TTE Directive) at [www.motorola.com/rtte](http://www.motorola.com/rtte) (in English only). To find your DoC, enter the Product approval number from your product's label in the "Search" bar on the website.

## FCC notice to users

**The following statement applies to all products that bear the FCC logo on the product label.**

This equipment has been tested and found to comply with the limits for a Class B digital device, pursuant to part 15 of the FCC rules. See 47 CFR Sec. 15.105(b). These limits are designed to provide reasonable protection against harmful interference in a residential installation. This equipment generates, uses and can radiate radio frequency energy and, if not installed and used in accordance with the instructions, may cause harmful interference to radio communications. However, there is no guarantee that interference will not occur in a particular installation. If this equipment does cause harmful interference to radio or television reception, which can be determined by turning the equipment off and on, the user is encouraged to try to correct the interference by one or more of the following measures:

- Reorient or relocate the receiving antenna.

- Increase the separation between the equipment and the receiver.
- Connect the equipment to an outlet on a circuit different from that to which the receiver is connected.
- Consult the dealer or an experienced radio/TV technician for help.

This device complies with part 15 of the FCC rules. Operation is subject to the following two conditions: (1) this device may not cause harmful interference, and (2) this device must accept any interference received, including interference that may cause undesired operation. See 47 CFR Sec. 15.19(a)(3).

Motorola has not approved any changes or modifications to this device by the user. Any changes or modifications could void the user's authority to operate the equipment. See 47 CFR Sec. 15.21.

For products that support Wi-Fi 802.11a (as defined in the product specifications available at [www.motorola.com](http://www.motorola.com)), the following information applies. This equipment has the capability to operate Wi-Fi in the 5 GHz Unlicensed National Information Infrastructure (U-NII) band. Because this band is shared with MSS (Mobile Satellite Service), the FCC has restricted such devices to indoor use only (see 47 CFR 15.407(e)). Since wireless hot spots operating in this band have the same restriction, outdoor services are not offered. Nevertheless, please do not operate this device in Wi-Fi mode when outdoors.

## Location services (GPS & AGPS)

The following information is applicable to Motorola mobile devices that provide location based (GPS and/or AGPS) functionality.

Your mobile device may use *Global Positioning System* (GPS) signals for location-based applications. GPS uses satellites controlled by the U.S. government that are subject to changes implemented in accordance with the Department of Defense policy and the Federal Radionavigation Plan. These changes may affect the performance of location technology on your mobile device.

Your mobile device may also use *Assisted Global Positioning System* (AGPS), which obtains information from the mobile network to improve GPS performance. AGPS uses your wireless service provider's network and therefore airtime, data charges and/or additional charges may apply in accordance with your service plan. Contact your wireless service provider for details.

## Your location

Location-based information includes information that can be used to determine the approximate location of a mobile device. Mobile devices that are connected to a wireless network transmit location-based information. Devices enabled with GPS or AGPS technology also transmit location-based information. Additionally, if you use applications that require location-based information (e.g. driving directions), such applications transmit location-based information. This location-based information may be shared with third parties, including your wireless service provider, applications providers, Motorola and other third parties providing services.



More

Support



Back

Next



Safety, regulatory & legal



# MOTOROLA XOOM™ 2 media edition with 4G

LIFE. POWERED.

YOUR TABLET  
START  
TOUCH  
NAVIGATE  
PERSONALISE  
TYPE  
LOAD UP  
SURF  
PLAY & RECORD  
CONTROL  
LOCATE  
EMAIL  
CHAT  
CONTACT  
READ  
WORK  
NOTE  
CONNECT  
PROTECT  
ACCELERATE  
WANT MORE?  
TROUBLESHOOTING  
SAFETY, REGULATORY & LEGAL



More

Support



Back

Next



Safety, regulatory & legal

## Navigation

The following information is applicable to Motorola mobile devices that provide navigation features.

When using navigation features, note that mapping information, directions and other navigational data may contain inaccurate or incomplete data. In some countries, complete information may not be available. Therefore, you should visually confirm that the navigational instructions are consistent with what you see. All drivers should pay attention to road conditions, closures, traffic and all other factors that may impact driving. Always obey posted road signs.

## Smart practices while driving

**Check the laws and regulations on the use of mobile devices and their accessories in the areas where you drive. Always obey them. The use of these devices may be prohibited or restricted in certain areas—for example, hands-free use only may be required. Go to [www.motorola.com/callsmart](http://www.motorola.com/callsmart) (in English only) for more information.**

**Note:** Voice call features may not be available on all products.

Your mobile device lets you communicate by voice and data—almost anywhere, anytime, wherever wireless connection is available and safe conditions allow. When driving a car, driving is your first responsibility. If you choose to use your mobile device while driving, remember the following tips:

- **Get to know your Motorola mobile device and its features such as voice commands and "read out loud" features.** If available, these features help you to use your device without taking your attention off the road.
- **When available, use a hands-free device.** If possible, add an additional layer of convenience to your mobile device with one of the many Motorola original hands-free accessories available today.
- **Position your mobile device within easy reach.** Be able to access your mobile device without removing your eyes from the road. If you receive a call at an inconvenient time, if possible, let your voicemail answer it for you.
- **Let the person you are speaking to know you are driving; if necessary, suspend the call in heavy traffic or hazardous weather conditions.** Rain, sleet, snow, ice and even heavy traffic can be hazardous.
- **Do not take notes or look up information while driving.** Jotting down a "to do" list or going through your address book takes attention away from your primary responsibility—driving safely.
- **Assess the traffic; if possible, place calls when your car is not moving or before pulling into traffic.** If you must make a call while moving, use features such as voice commands, check the road and your mirrors, then continue.
- **Do not engage in stressful or emotional conversations that may be distracting.** Make people you are talking to aware you are driving and suspend conversations that can divert your attention away from the road.

## Privacy & data security

Motorola understands that privacy and data security are important to everyone. Given that some features of your mobile device may affect your privacy or data security, please follow these recommendations to enhance protection of your information:

- **Monitor access**—Keep your mobile device with you and do not leave it where others may have unmonitored access. Use your device's security and lock features, where available.
- **Keep software up to date**—If Motorola or a software/application vendor releases a patch or software fix for your mobile device that updates the device's security, install it as soon as possible.
- **Secure personal information**—Your mobile device can store personal information in various locations including your SIM card, memory card and internal memory. Make sure you remove or clear all personal information before you recycle, return or give away your device. You can also back up your personal data to transfer to a new device. **Note:** For information on how to back up or wipe data from your mobile device, go to [www.motorola.com/support](http://www.motorola.com/support)
- **Online accounts**—Some mobile devices provide a Motorola online account (such as MOTOBLUR). Go to your account for information on how to manage the account and how to use security features such as remote wipe and device location (where available).
- **Applications and updates**—Choose your apps and updates carefully and install from trusted sources only. Some apps can impact your product's performance and/or have access to private information including account details, usage data, location details and network resources.
- **Wireless**—For mobile devices with Wi-Fi features, only connect to trusted Wi-Fi networks. Also, when using your device as a hotspot (where available) use network security. These precautions will help prevent unauthorised access to your device.
- **Location-based information**—Location-based information includes information that can be used to determine the approximate location of a mobile device. Products that are connected to a wireless network transmit location-based information. Devices enabled with GPS or AGPS technology also transmit location-based information. Additionally, if you use applications that require location-based information (e.g. driving directions), such applications transmit location-based information. This location-based information may be shared with third parties, including your wireless service provider, applications providers, Motorola and other third parties providing services.
- **Other information your device may transmit**—Your device may also transmit testing and other diagnostic (including location-based) information, and other non-personal information to Motorola or other third-party servers. This information is used to help improve products and services offered by Motorola.

If you have further questions regarding how the use of your mobile device may impact your privacy or data security, please contact Motorola at [privacy@motorola.com](mailto:privacy@motorola.com), or contact your service provider.



# MOTOROLA XOOM™ 2 media edition with 4G

LIFE. POWERED.

**YOUR TABLET**  
**START**  
**TOUCH**  
**NAVIGATE**  
**PERSONALISE**  
**TYPE**  
**LOAD UP**  
**SURF**  
**PLAY & RECORD**  
**CONTROL**  
**LOCATE**  
**EMAIL**  
**CHAT**  
**CONTACT**  
**READ**  
**WORK**  
**NOTE**  
**CONNECT**  
**PROTECT**  
**ACCELERATE**  
**WANT MORE?**  
**TROUBLESHOOTING**  
**SAFETY, REGULATORY & LEGAL**

## Use & care

To care for your Motorola device, please observe the following:



### liquids

Don't expose your mobile device to water, rain, extreme humidity, sweat or other liquids. If it does get wet, don't try to accelerate drying with the use of an oven or dryer, as this may damage the device.



### extreme heat or cold

Don't use, recharge or store your mobile device in temperatures below 0°C (32°F) or above 35°C (95°F).



### microwaves

Don't try to dry your device in a microwave oven.



### dust and dirt

Don't expose your device to dust, dirt, sand, food or other inappropriate materials.



### cleaning solutions

To clean your device, use only a dry soft cloth. Do not use alcohol or other cleaning solutions.



### shock and vibration

Don't drop your device.



### protection

To help protect your mobile device, always make sure that any battery, connector and compartment covers are closed and secure.

## Recycling

### Mobile devices & accessories

Please do not dispose of mobile devices or electrical accessories (such as chargers, headsets or batteries) with your household waste or in a fire. These items should be disposed of in accordance with the national collection and recycling schemes operated by your local or regional authority. Alternatively, you may return unwanted mobile devices and electrical accessories to any Motorola approved service centre in your region. Details of Motorola-approved national recycling schemes and further information on Motorola recycling activities can be found at:

[www.motorola.com/recycling](http://www.motorola.com/recycling)



## Packaging & product guides

Product packaging and product guides should only be disposed of in accordance with national collection and recycling requirements. Please contact your regional authorities for more details.

## Software copyright notice

Motorola products may include copyrighted Motorola and third-party software stored in semiconductor memories or other media. Laws in the United States and other countries preserve for Motorola and third-party software providers certain exclusive rights for copyrighted software, such as the exclusive rights to distribute or reproduce the copyrighted software. Accordingly, any copyrighted software contained in Motorola products may not be modified, reverse-engineered, distributed or reproduced in any manner to the extent allowed by law. Furthermore, the purchase of Motorola products shall not be deemed to grant either directly or by implication, estoppel or otherwise, any licence under the copyrights, patents or patent applications of Motorola or any third-party software provider, except for the normal, non-exclusive, royalty-free licence to use that arises by operation of law in the sale of a product.

## Content copyright

The unauthorised copying of copyrighted materials is contrary to the provisions of the copyright laws of the United States and other countries. This device is intended solely for copying non-copyrighted materials, materials in which you own the copyright or materials which you are authorised or legally permitted to copy. If you are uncertain about your right to copy any material, please contact your legal advisor.

## Open source software information

For instructions on how to obtain a copy of any source code being made publicly available by Motorola related to software used in this Motorola mobile device, you may send your request in writing to the address below. Please make sure that the request includes the model number and the software version number.

MOTOROLA MOBILITY, INC.

OSS Management  
600 North US Hwy 45  
Libertyville, IL 60048  
USA

The Motorola website [opensource.motorola.com](http://opensource.motorola.com) (in English only) also contains information regarding Motorola's use of open source.

Motorola has created the [opensource.motorola.com](http://opensource.motorola.com) website to serve as a portal for interaction with the software community-at-large.

To view additional information regarding licences, acknowledgments and required copyright notices for open source packages used in this Motorola mobile device, please touch **Apps > Settings > About tablet > Legal information > Open source licences**. In addition, this Motorola device may include self-contained applications that present supplemental notices for open source packages used in those applications.



More

Support



Back

Next



Safety, regulatory & legal



# MOTOROLA XOOM™ 2 media edition with 4G

LIFE.  POWERED.

YOUR TABLET  
START  
TOUCH  
NAVIGATE  
PERSONALISE  
TYPE  
LOAD UP  
SURF  
PLAY & RECORD  
CONTROL  
LOCATE  
EMAIL  
CHAT  
CONTACT  
READ  
WORK  
NOTE  
CONNECT  
PROTECT  
ACCELERATE  
WANT MORE?  
TROUBLESHOOTING  
SAFETY, REGULATORY & LEGAL

## Limited Global Warranty, ("Limited Warranty")

### Motorola Tablet Computer

**FOR CONSUMERS WHO ARE COVERED BY CONSUMER PROTECTION LAWS OR REGULATIONS IN THEIR COUNTRY OF PURCHASE OR, IF DIFFERENT, THEIR COUNTRY OF RESIDENCE, THE BENEFITS CONFERRED BY THIS LIMITED WARRANTY ARE IN ADDITION TO ALL RIGHTS AND REMEDIES CONVEYED BY SUCH CONSUMER PROTECTION LAWS AND REGULATIONS.**

#### Who is covered?

This Limited Warranty extends only to the first consumer purchaser of the Product, and is not transferable.

#### What does this Limited Warranty cover?

Motorola's Warranty obligations are limited to the terms and conditions set forth herein and are only available in the country where the Product was purchased. Subject to the exclusions contained below, Motorola warrants this tablet computer ("Product") against defects in materials and workmanship, under normal consumer use, for a period of ONE (1) YEAR from the date of retail purchase by the original end-user purchaser ("Warranty period").

Products repaired or replaced under this Limited Warranty are covered for the balance of the original Warranty period, or 90 days from the date of service, whichever is longer. Any upgrade to the original Product will be covered only for the duration of the Warranty period.

This Limited Warranty applies only to new Products which are a) manufactured by or for Motorola as identified by the "Motorola" trademark, trade name or logo legally affixed to them; b) purchased by consumers from an authorised reseller or distributor of Motorola Products; and c) accompanied by this written Limited Warranty.

#### What will Motorola do?

If a covered defect or damage arises and a valid Warranty claim is received within the applicable Warranty period, Motorola, at its sole option, unless otherwise required by applicable law, will either (1) repair, at no charge, the defect or damage using new, used or reconditioned/refurbished functionally equivalent replacement parts; or (2) exchange the Product with a replacement Product that is new or which has been reconditioned/refurbished or otherwise remanufactured from new or used parts and is functionally equivalent to the original Product; or (3) refund the purchase price of any Products covered by the terms and conditions of this Limited Warranty.

Products, parts and supporting documentation provided to Motorola as part of the Warranty process, shall become the property of Motorola, and may not be returned. When a replacement or refund is given, the Product for which the replacement or refund is provided must be returned to Motorola and shall become the property of Motorola.

## Exclusions (products and accessories)

### This Warranty does not apply to:

- Consumable parts**, such as batteries, unless its fully charged capacity falls below 50% of the rated capacity within the first year from the date of purchase; or protective coatings designed to diminish over time unless failure has occurred due to a defect in materials or workmanship.
  - Cosmetic damage**, including but not limited to scratches, dents, cracks or other cosmetic damage.
  - Damage caused by use with non-Motorola products.** Defects or damage that result from the use of non-Motorola branded or certified Products, accessories or other peripheral equipment, including, without limitation, housings, parts or software, are excluded from coverage.
  - Damage caused by accident, abuse, misuse, liquid contact, fire, earthquake or other external causes;** including but not limited to: (i) improper usage or operation (e.g. operating the Product outside their permitted or intended uses as defined by Motorola, including but not limited to as set forth by Motorola in the Products' user manual, quick start guide, online tutorials and other documentation), improper storage (e.g. subjecting the Product to extreme temperatures), abuse or neglect (e.g. broken/bent/missing clips/fasteners/connectors); impact damage (e.g. dropping the Product) (ii) contact with liquids, water, rain, extreme humidity, heavy perspiration or other moisture; sand, food, dirt or similar substances; (iii) use of the Products for commercial rental purposes; or (iv) normal causes or acts which are not the fault of Motorola, including but not limited to flood, fire, earthquake, tornado or other acts of God, are excluded from coverage.
  - Damage caused by unauthorised service or modification.** Defects or damage resulting from service, testing, adjustment, installation, maintenance, alteration or modification in any way, including but not limited to tampering with or altering the software, by someone other than Motorola, or its authorised service centres, are excluded from coverage.
  - A product or part that has been modified in any manner without the written permission of Motorola.** Products that have been altered in any manner so as to prevent Motorola from determining whether such Products are covered under the terms of this Limited Warranty are excluded from coverage. The foregoing shall include but not be limited to (i) serial numbers, date tags or other manufacturer coding that has been removed, altered or obliterated; (ii) mismatched or duplicated serial numbers; or (iii) broken seals or other evidence of tampering.
- Do not open the Product or attempt to repair the Product yourself; such conduct may cause damage that is not covered by this Warranty.
- Normal wear and tear or otherwise due to the normal aging of the Product.**
  - Defects, damages or the failure of the Product due to any communication service or network you subscribe to or use with the Products.**
  - All software, including operating system software, third-party software, applications, and all other software of any kind.** Software distributed by Motorola is provided "AS-IS" and "AS AVAILABLE," "WITH ALL FAULTS" and without a Warranty of any



More

Support



Back

Next



Safety, regulatory & legal



# MOTOROLA XOOM™ 2 media edition with 4G

LIFE.  POWERED.

YOUR TABLET  
START  
TOUCH  
NAVIGATE  
PERSONALISE  
TYPE  
LOAD UP  
SURF  
PLAY & RECORD  
CONTROL  
LOCATE  
EMAIL  
CHAT  
CONTACT  
READ  
WORK  
NOTE  
CONNECT  
PROTECT  
ACCELERATE  
WANT MORE?  
TROUBLESHOOTING  
SAFETY, REGULATORY & LEGAL



More

Support



Back

Next



Safety, regulatory & legal

kind. The Limited Warranty does not apply to any non-Motorola product or any software, even if packaged or sold with the Motorola Product hardware, unless otherwise required by applicable local law.

(j) **Products that have been refurbished, reconditioned or remanufactured.** The foregoing does not apply to Products repaired or replaced pursuant to the terms of this Limited Warranty.

## What other limitations are there?

TO THE EXTENT PERMITTED BY APPLICABLE LAW:

- THIS LIMITED WARRANTY AND THE REMEDIES SET FORTH HEREIN ARE EXCLUSIVE AND IN LIEU OF ALL OTHER WARRANTIES AND REMEDIES, WHETHER ORAL OR WRITTEN, STATUTORY, EXPRESS OR IMPLIED. NO ORAL OR WRITTEN REPRESENTATIONS MADE BY MOTOROLA OR ANY SELLER, RESELLER OR DISTRIBUTOR OF THE PRODUCTS, INCLUDING EMPLOYEES AND AGENTS THEREOF, SHALL CREATE ANY ADDITIONAL WARRANTY OBLIGATIONS, INCREASE THE SCOPE, OR OTHERWISE MODIFY IN ANY MANNER THE TERMS OF THIS LIMITED WARRANTY.
- MOTOROLA SPECIFICALLY DISCLAIMS ANY AND ALL STATUTORY OR IMPLIED WARRANTIES, INCLUDING, WITHOUT LIMITATION, WARRANTIES OF MERCHANTABILITY, FITNESS FOR A PARTICULAR PURPOSE, NON-INFRINGEMENT AND ALL WARRANTIES AGAINST HIDDEN OR LATENT DEFECTS. WHERE SUCH STATUTORY OR IMPLIED WARRANTIES CANNOT LAWFULLY BE DISCLAIMED, THEN TO THE EXTENT PERMITTED BY LAW, ALL SUCH WARRANTIES SHALL BE LIMITED IN DURATION TO THE DURATION OF THE EXPRESS LIMITED WARRANTY CONTAINED HEREIN AND THE REMEDIES OF REPAIR, REPLACEMENT OR REFUND AS DETERMINED BY MOTOROLA IN ITS SOLE DISCRETION SHALL BE THE EXCLUSIVE REMEDY OF THE CONSUMER.
- MOTOROLA DOES NOT WARRANT THAT THE OPERATION OF ANY PRODUCTS OR SOFTWARE COVERED UNDER THIS LIMITED WARRANTY WILL MEET YOUR REQUIREMENTS, WORK IN COMBINATION WITH ANY HARDWARE OR SOFTWARE APPLICATIONS OR THIRD PARTY SERVICES, BE UNINTERRUPTED, ERROR-FREE, OR WITHOUT RISK TO, OR LOSS OF, ANY INFORMATION, DATA, SOFTWARE OR APPLICATIONS CONTAINED THEREIN, OR THAT DEFECTS IN THE PRODUCTS OR SOFTWARE WILL BE CORRECTED.
- IN NO EVENT SHALL MOTOROLA BE LIABLE, WHETHER IN CONTRACT, TORT OR UNDER OTHER LEGAL THEORY (INCLUDING NEGLIGENCE), FOR DAMAGES IN EXCESS OF THE PURCHASE PRICE OF THE PRODUCTS, OR FOR ANY INDIRECT, INCIDENTAL, SPECIAL OR CONSEQUENTIAL DAMAGES OF ANY KIND, OR LOSS OF REVENUE OR PROFITS; LOSS OF BUSINESS; BUSINESS INTERRUPTION; LOSS OF OPPORTUNITY; LOSS OF GOODWILL; LOSS OF REPUTATION; LOSS OF, DAMAGE TO, OR CORRUPTION OF INFORMATION, DATA, SOFTWARE OR APPLICATIONS (INCLUDING ANY COSTS ASSOCIATED WITH RECOVERING, PROGRAMMING, OR REPRODUCING ANY INFORMATION, DATA, SOFTWARE OR APPLICATIONS STORED ON OR USED WITH MOTOROLA PRODUCTS, OR ANY FAILURE TO MAINTAIN THE CONFIDENTIALITY OF ANY INFORMATION OR DATA STORED ON THE PRODUCTS); OR OTHER FINANCIAL LOSS ARISING OUT OF OR IN CONNECTION WITH THE ABILITY OR INABILITY TO USE THE PRODUCTS.

**SOME STATES OR JURISDICTIONS DO NOT ALLOW THE LIMITATION OR EXCLUSION OF INCIDENTAL OR CONSEQUENTIAL DAMAGES, OR THE EXCLUSION OR LIMITATION ON THE LENGTH OF AN IMPLIED WARRANTY, OR THE LIMITATION OR EXCLUSION OF DAMAGES FOR PERSONAL INJURIES CAUSED BY NEGLIGENCE, SO THE ABOVE LIMITATIONS OR EXCLUSIONS MAY NOT APPLY TO YOU. THIS LIMITED WARRANTY GIVES YOU SPECIFIC LEGAL RIGHTS, AND YOU MAY ALSO HAVE OTHER RIGHTS THAT VARY FROM STATE OR JURISDICTION.**

In the event that any term or provision contained in this Limited Warranty is found to be invalid, illegal or unenforceable by a court of competent jurisdiction, then such provision shall be deemed modified to the extent necessary to make such provision enforceable by such court, taking into account the intent of the parties. The invalidity in whole or in part of any portion of this Limited Warranty shall not impair or affect the validity or enforceability of the remaining provisions of this Limited Warranty.

## How to obtain Warranty service or other information

1. Please access and review the online Customer support section of Motorola's consumer website prior to requesting Warranty service.
2. If the Product is still not functioning properly after making use of this resource, please contact the Warrantor listed at the Motorola website or the contact information for the corresponding location.
3. A representative of Motorola, or of a Motorola Authorised repair centre, will help determine whether your Product requires service. You may be required to download, or otherwise obtain and accept software updates from Motorola or a Motorola Authorised repair centre. You are responsible for any applicable carrier service fees incurred while obtaining the required downloads. Complying with the Warranty process, repair instructions and accepting such software updates is required in order to receive additional Warranty support.
4. If the software update does not fix the problem, you will receive instructions on how to ship the Product to a Motorola Authorised repair centre or other entity.
5. To obtain service, as permitted by applicable law, you are required to include: (a) a copy of your receipt, bill of sale or other comparable proof of purchase; (b) a written description of the problem; (c) the name of your service provider, if applicable; (d) your address and telephone number. In the event the Product is not covered by this Limited Warranty, Motorola will inform the consumer of the availability, price and other conditions applicable to the repair of the Product.

**ALL INFORMATION, DATA, SOFTWARE OR OTHER APPLICATIONS, INCLUDING BUT NOT LIMITED TO PERSONAL CONTACTS, ADDRESS BOOKS, PICTURES, MUSIC AND GAMES WILL BE ERASED DURING THE REPAIR PROCESS, AND CAN NOT BE REINSTALLED BY MOTOROLA.** To avoid losing such information, data, software or other applications please create a backup before you deliver your Product for Warranty service, and disable any security passwords. You will be responsible for reinstalling all such information, data, software, other applications and passwords. Your Product or a replacement Product will be returned to you as your Product was configured





# MOTOROLA XOOM™ 2 media edition with 4G

LIFE.  POWERED.

**YOUR TABLET**  
**START**  
**TOUCH**  
**NAVIGATE**  
**PERSONALISE**  
**TYPE**  
**LOAD UP**  
**SURF**  
**PLAY & RECORD**  
**CONTROL**  
**LOCATE**  
**EMAIL**  
**CHAT**  
**CONTACT**  
**READ**  
**WORK**  
**NOTE**  
**CONNECT**  
**PROTECT**  
**ACCELERATE**  
**WANT MORE?**  
**TROUBLESHOOTING**  
**SAFETY, REGULATORY & LEGAL**

when originally purchased, subject to applicable software updates. Motorola may install operating system software updates as part of Warranty service that may prevent the Product from reverting to an earlier version of the operating system software. Third party applications installed on the Product may not be compatible or work with the Product as a result of the operating system software update. Motorola and its Authorised service centres are not responsible for the loss of, or inability to use, such information, data, software or other applications.

**To obtain service or other information, please access and review the online Customer support section of Motorola's consumer website at [www.motorola.com](http://www.motorola.com).**

## Copyright & trademarks

[www.motorola.com](http://www.motorola.com)

Certain features, services and applications are network-dependent and may not be available in all areas; additional terms, conditions and/or charges may apply. Contact your service provider for details.

All features, functionality and other product specifications, as well as the information contained in this guide, are based upon the latest available information and believed to be accurate at the time of printing. Motorola reserves the right to change or modify any information or specifications without notice or obligation.

**Note:** The images in this guide are examples only.

MOTOROLA and the Stylised M Logo are trademarks or registered trademarks of Motorola Trademark Holdings, LLC. Google, the Google logo, Google Maps, Google Talk, Google Latitude, Gmail, YouTube, Picasa, Google Books, Google Docs, Google Goggles, Google Finance, Google Places, Google Maps Navigation Beta, Google Calendar, Android, Android Market and other marks are trademarks of Google, Inc. All other product or service names are the property of their respective owners.

© 2011 Motorola Mobility Inc. All rights reserved.

**Caution:** Motorola does not take responsibility for changes/modification to the transceiver.

Product ID: MOTOROLA XOOM™ 2 media edition Wi-Fi (MZ607-16, MZ607-32)  
Manual number: 68016581006



More

Support



Back

Next



Safety, regulatory & legal





# MOTOROLA XOOM™ 2 media edition with 4G

LIFE.  POWERED.

**YOUR TABLET**  
**START**  
**TOUCH**  
**NAVIGATE**  
**PERSONALISE**  
**TYPE**  
**LOAD UP**  
**SURF**  
**PLAY & RECORD**  
**CONTROL**  
**LOCATE**  
**EMAIL**  
**CHAT**  
**CONTACT**  
**READ**  
**WORK**  
**NOTE**  
**CONNECT**  
**PROTECT**  
**ACCELERATE**  
**WANT MORE?**  
**TROUBLESHOOTING**  
**SAFETY, REGULATORY & LEGAL**



More

Support



Back

Next



Safety, regulatory & legal



# MOTOROLA XOOM™ 2 media edition with 4G

LIFE.  POWERED.

**YOUR TABLET**  
**START**  
**TOUCH**  
**NAVIGATE**  
**PERSONALISE**  
**TYPE**  
**LOAD UP**  
**SURF**  
**PLAY & RECORD**  
**CONTROL**  
**LOCATE**  
**EMAIL**  
**CHAT**  
**CONTACT**  
**READ**  
**WORK**  
**NOTE**  
**CONNECT**  
**PROTECT**  
**ACCELERATE**  
**WANT MORE?**  
**TROUBLESHOOTING**  
**SAFETY, REGULATORY & LEGAL**



More

Support



Back

Next



Safety, regulatory & legal