

SAMSUNG



YP-Z5

For Your Safety

Read this manual carefully to ensure proper use of the product and to avoid any danger or physical damage.



WARNING

Failing to heed the product instructions may cause serious injury.

Product Use

Improper use can result in explosion, fire or electric shock.



Do not disassemble, repair or modify this product on your own.



Do not get the product wet or drop it in water.

If the product gets wet, do not switch it on. Contact a Service Center.



Do not place the product in damp, dusty or sooty areas, as it could result in fire or electric shock.



Do not leave the product in areas above 35°C(95°F) (such as a sauna or inside a parked car).

During the summer the temperature inside a car may rise up to 80°C(176°F).

To avoid your hearing damage

Using the earphone or headphone for an extended time can cause a serious damage to your hearing.

If you are exposed to a sound in higher than 85db for an extended time, you will be adversely affected on your hearing. The higher the sound is, the more seriously damaged your hearing is (an ordinary conversation is made in 50 to 60 db and the noise level on the road is approximately 80 db). You are strongly advised to set the volume level to medium (the medium level is usually less than 2/3 of the maximum).

If you feel a ringing in the ear(s), lower the volume or stop using the earphone or headphone.

To avoid a risk of traffic accident

Do not use the earphone while you are driving a bicycle, automobile or motorcycle.

Otherwise it can cause a serious accident and, furthermore, it is prohibited by the law in some areas.

Using the earphone on the way, in particular, on the crosswalk can lead to a serious accident.

For your safety, make sure the earphone cable should not get in the way of your arm or other surrounding objects while you are taking exercise or a walk.



CAUTION

Failure to follow all instructions lead to physical injuries or damage to the product.

Product Use

Take care to avoid product malfunction and physical damage.



When wearing the product around your neck, take care not to exert excessive force on the neck string.

Management of Important Data



Be sure to backup important data.

Please be aware that we claim no responsibility for damage from data loss due to breakdown, repair or other causes.

Avoid malfunction



Do not cause excessive impact on the product by dropping it. Do not place heavy objects on top of the product.



Prevent any foreign particles or dust from entering into the product.



Always use the accessories provided by or approved by Samsung.



Do not spray water on the product. Never clean the product with chemical substances such as benzene or thinner, as it may cause fire, electric shock or deteriorate the surface.



Do not place the product near magnetic objects, as it may cause a malfunction.

Contents

Safety Precautions	2
Contents	4

Chapter 1. | Preparation

Checking the Product and Accessories	7
Checking the Accessories	7
Components	8
Screen Display Information	10
Button Functions	11
Charging the battery	13
Basic Use	14

Chapter 2. | Connecting to your PC

Connecting to your PC	18
Installing Windows Media Player10	19
Transferring Music or Picture Files to your Player	20

Chapter 3. | Listening to Music

Listening to Music	23
Transferring Playlists from WMP10	26
To Play a Playlist	28
Shuffle Play (Random Repeat)	29
Checking the Music Information	31

Chapter 4. | Picture Viewing

Picture Viewing	33
Picture Enlarging/Slideshow Viewing	34

Chapter 5. | Setup

Setup	36
Audio Setup	36
Display Setup.....	37
Slideshow Setup	38
Repeat Setup.....	39
Timer Setup	40
Language Setup	41
Reset	42
Checking the System Information.....	43

Chapter 6. | Troubleshooting & Appendix

System Reset	45
Troubleshooting	46
Menu Tree	49
Product Specifications	50
License	51
Contact SAMSUNG WORLD WIDE	52

Chapter 1. Preparation

Checking the Product and Accessories	7
Charging the battery	13
Basic Use	14

Checking the Accessories

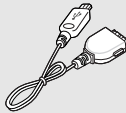
The following diagrams are a guide and may differ slightly from the actual product appearance.



Player



Earphones



USB Cable

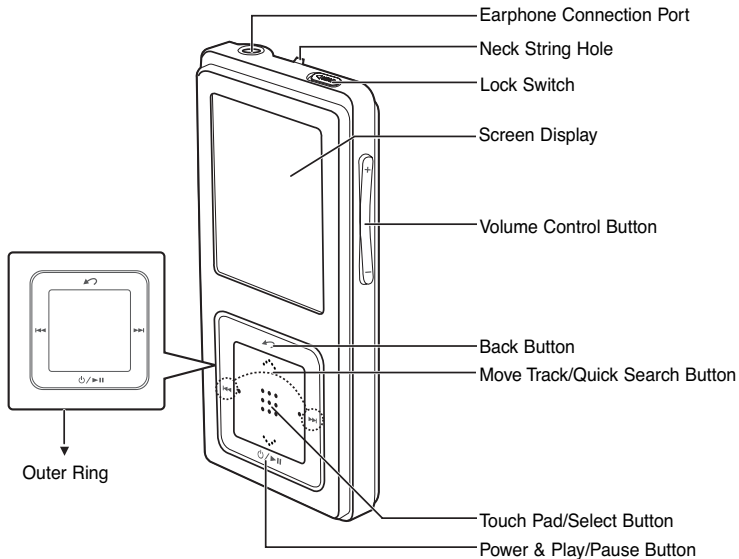


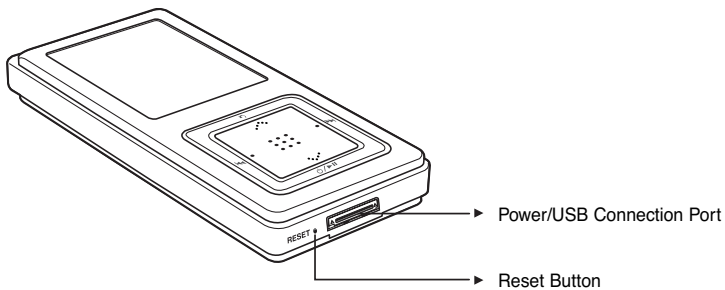
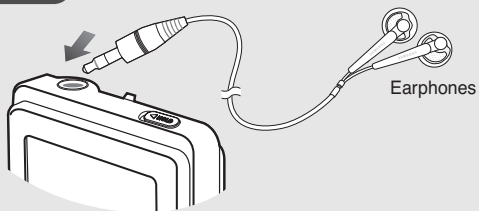
Installation CD

- Design of accessories is subject to change for the purpose of improvement, without notice.

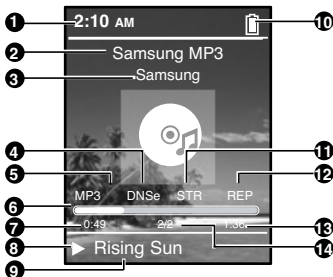
Components

Front, Right Side and Top



Bottom**Earphone Connection****▶ Top**

Screen Display Information










- | | |
|--|---|
| 1 Current Time Display | 8 Play/Pause Display |
| 2 Album Title Display | 9 Music Title Display |
| 3 Album Display | 10 Battery Display |
| 4 3D Sound Displays | 11 Street Mode Display |
| 5 File Type Display
(MP3, WMA etc) | 12 Repeat Play Display |
| 6 Play Status Bar | 13 Total Play Time Display |
| 7 Play Time Display | 14 Current Music Number/
Total Number Display |



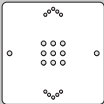
NOTE

- The screen pictures are for illustration purposes only. The actual screen may differ.

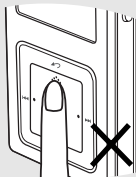
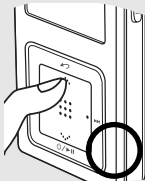
Button Functions

Buttons	Functions and Use
	<ul style="list-style-type: none"> ■ Long press for power on/off. ■ Short press for play/pause.
	<ul style="list-style-type: none"> ■ Long press to move to the Menu screen. ■ Short press to move to the previous screen.
	<ul style="list-style-type: none"> ■ Long press to scan to a point on the current track. ■ Short press to move to the previous track or to play the current track from the start.
	<ul style="list-style-type: none"> ■ Long press to scan to a point on the current track. ■ Short press to move to the next track.
	<ul style="list-style-type: none"> ■ Push in the direction of the arrow to lock the button functions.
	<ul style="list-style-type: none"> ■ Press with a pointed object to reset.
	<ul style="list-style-type: none"> ■ Press to reduce/increase the volume.

Button Functions (Continued)

Buttons	Functions and Use
	<ul style="list-style-type: none"> ■ Moving up, down, left and right and Function Selection <ul style="list-style-type: none"> ◀ Tap on the top or bottom side to move up or down by one selection. ◀ Tap on the left or right side to move left or right by one selection (Picture mode). ◀ Tap and hold on top or bottom side to move up or down continuously. • Press the center of the Touchpad to select the function and move to the next screen.

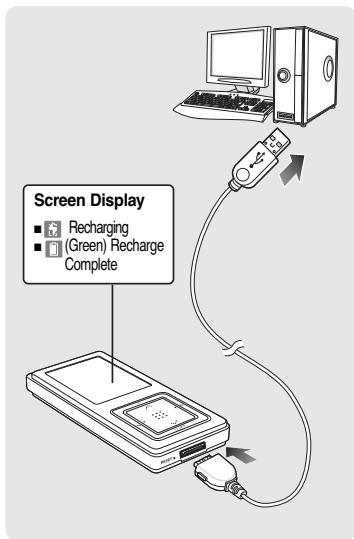
* The touchpad works better when pressed lightly with a fingertip.



- Do not use any sharp object other than your fingers to operate the touchpad. Otherwise, touchpad may be damaged.
- Do not press on the TOUCH PAD if your fingers are not clean.

Charging the battery

Fully charge the battery before using the player for the first time or when it has not been used for a while.



1 Connect the USB cable to the USB port (⏏) on your PC.

2 Connect the other end of the USB cable to the Power/USB Connection Port on the bottom of the player.

- <Connected> appears on the screen display of the player.
- When connected with the USB cable, it takes about 4 hours for a full charge although this may vary depending on your PC environment.

Battery Use

- Recharge and store within the temperature range of 5°C~35°C(40°F~95°F).
- Do not overcharge (longer than 12 hours). Excessive charging or discharging may shorten the battery's life.
- Battery life naturally shortens slowly over time as it is a consumable item.

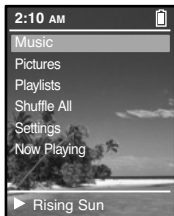


NOTE

- For stable charging, run WMP10 after connecting to your PC.
- Charging may take more time if there is another USB device connected to your PC.
- If the player displays "low battery", actual charging may start after a short period of time when you connect to your PC.

Basic Use

Turning the Power On & Off



Turning the Power On

Press and hold the [⏻/▶] button

- Power is turned on.

Turning the Power Off

Press and hold the [⏻/▶] button

- Power is turned off.
- Power is automatically turned off when none of the buttons have been pressed for a preset period of time (Default: 1 minute) in the pause mode.

Playing Music



1 Press and hold the [⏪] button to move to the Menu screen.

2 Tap on the [⋮] to select <Music>, then press the [Touch Pad].

- The Music Menu will appear.

3 Tap on the [⋮] to select a music file of your choice.

4 Press the [Touch Pad].

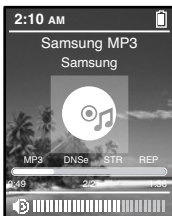
- The music file will begin playing.



NOTE

- Press the [⏪] button to move to the previous screen.
- Press and hold the [⏪] button to move to the Menu screen.

Volume Control



Press the [+ , -] button on the side of the unit.

- The Volume Status Bar will appear.
- Press the + button to increase the volume or the – button to decrease it.

Lock Function

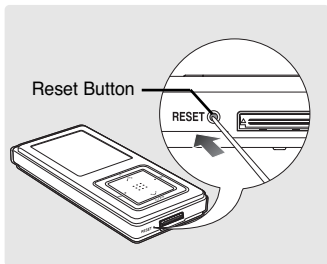


In Hold mode, all buttons are disabled. This function is useful when you are walking or jogging.

- 1 Push the [HOLD] button on the top of the unit in the direction of the arrow.
- 2 Push the [HOLD] button in the opposite direction of the arrow to release the Lock function.

Basic Use (Continued)

Reset Function



If a product malfunction occurs, you can re-initialize the system by pressing the Reset button. ►P45

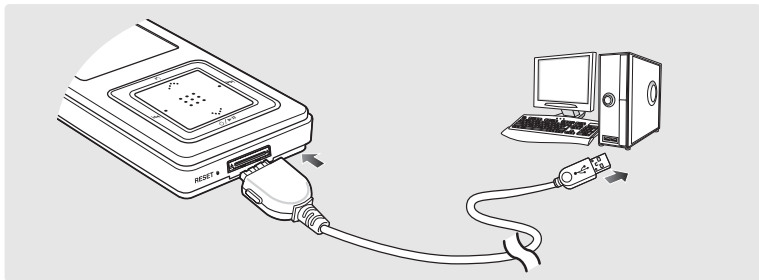
Chapter 2. | Connecting to your PC


Connecting to your PC	18
Installing Windows Media Player10	19
Transferring Music or Picture Files to your Player	20

Connecting to your PC

Before you start!

Use the USB Cable provided when connecting the product to your PC.



- 1 Connect the USB cable to the USB port () on your PC.
- 2 Connect the other end of the USB cable to the Power/USB Connection Port on bottom of the player.
 - <Connected> appears on the screen display of the player.

PC Requirements

For use in conjunction with your PC, the following is required:

- Pentium 300MHz or higher
- Windows XP Service Pack 1 or higher
- 100MB of free hard disc space
- CD Rom Drive (2X or higher)
- USB Port 2.0 only
- DirectX 9.0 or higher
- Windows Media Player 10.0 or higher

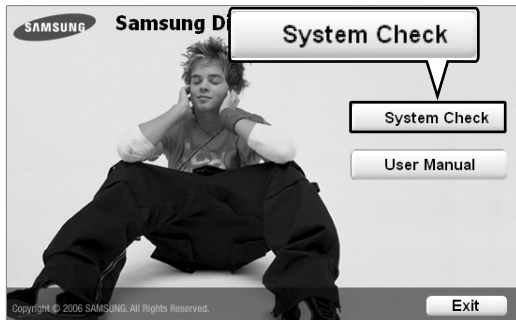


- If you connect the player through a USB hub, the connection may be unstable. Please connect the player to the computer directly.

Installing Windows Media Player10

You cannot transfer files to the player when Windows Media Player 10 is not installed on your PC.

- To install Windows Media Player 10 on your PC, insert the installation CD into the CD-ROM drive of your PC and select the [System Check].



Transferring Music or Picture Files to your Player

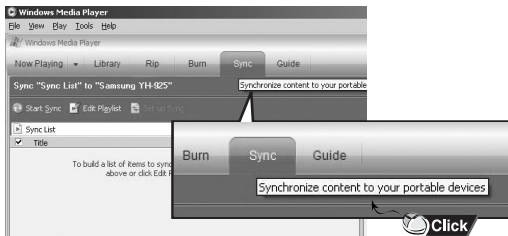
You can download MP3,WMA and JPEG files using Windows Media Player 10. The files downloaded from WMP10 to the player, will be automatically saved in Music or Pictures folder.

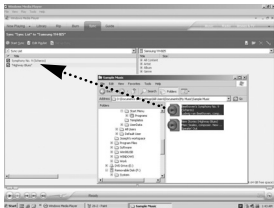
1 Connect the player to PC.

2 Run Windows Media Player10.

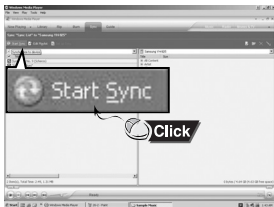
- Select [Start] → [Programs] → [Windows Media Player] on the desktop.

3 Select [Sync] at the top of the screen.

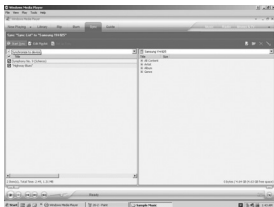




- 4 When the [Sync] window appears, select the file you want to transfer to the player, drag and drop it to the left [Sync List] window.



- 5 Make sure the music or picture files you want to download are checked, and then press [Start Sync] at the top of the screen.
- [Synchronized to Device] message will appear on the left window. The downloaded files will appear in the right window under Music folder.



- 6 You can check the transferred file in the right window.

Chapter 3. | Listening to Music

Listening to Music	23
Transferring Playlists from WMP10	26
To Play a Playlist	28
Shuffle Play (Random Repeat)	29
Checking the Music Information	31

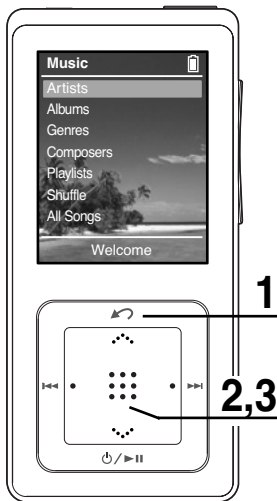
■ Before you start!

Transfer the music file of your choice from your PC to the player.

Listening to Music

Before you start!

Connect the earphones, then switch on the player, and check the battery.



E.g. Playing by Artist

- 1** Press and hold the [] button to move to the Menu screen.
- 2** Tap on the [] to select <Music>, then press the [Touch Pad].
 - The Music Menu will appear.
- 3** Tap on the [] to select <Artists>, then press the [Touch Pad].

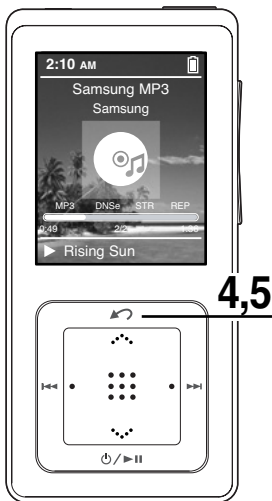
Music Menu

- <Artists> : To play by artist
- <Albums> : To play by album
- <Genres> : To play by genre
- <Composers> : To play by composer
- <Playlists> : To play by Playlist
- <Shuffle> : To play continuously in random order
- <All Songs> : To play in numeric or alphabetical order


NOTE

- The music files compatible with the player are MP3, WMA, Secure WMA.
- MP1 or MP2 files which only have a changed extension to MP3, may not play on the player.
- A file without an ID3 Tag (music information) is displayed as [unknown].

Listening to Music (Continued)



4 Tap on the [⋮] to select an artist, then press the [Touch Pad].

- The albums for the artist will appear.

5 Tap on the [⋮] to select an album, then press the [Touch Pad].

- The music files for the selected album will appear.

6 Tap on the [⋮] to select a music file to play, then press the [Touch Pad].

- The music will start playing.
- The Play Screen can be changed by pressing the [Touch Pad].

To Pause

1 Press the [⏻/▶||] button while the music is playing.

- The music playback will be paused.

2 Press the [⏻/▶||] button again.

- The music will play from the point where it stopped.



NOTE

- Power is automatically turned off when none of the buttons have been pressed for a preset period of time (changes depending on settings shown on page 37) in the pause mode.

To search within a track

- 1 **Press and hold the [|◀◀] or [▶▶ |] button while the selected track is playing.**
 - It searches to the beginning or the end of the track.
- 2 **Release the button at the point you wish to start.**
 - It starts playing from the point you release the button.

To Play from the beginning of the current track

Press the [|◀◀] button after 10 seconds of play.

- The current track starts playing from the beginning.

To play the previous/next track

Press the [|◀◀] button within 10 seconds of play.

- The previous track will start playing.

Press the [▶▶ |] button.

- The next track will start playing.



CAUTION

- When playing VBR files, the previous track may not play even if you press the [|◀◀] button within 10 seconds of the play.



NOTE

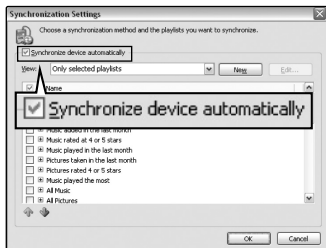
- Press the [|◀◀] button within 10 seconds of play to move to the previous track.

Transferring Playlists from WMP10



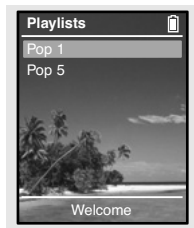
1 To transfer playlists from WMP10, click on “Sync Settings” in the WMP10 menu on your PC.

2 Select <Synchronize device automatically>.



3 Select the playlists you want to sync (transfer) to your player.

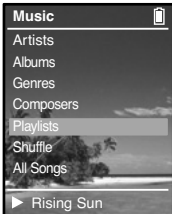
- 4** Click on Start Sync in the WMP10 menu. The Playlists will be transferred to your player and will appear in the Playlists menu.



To Play a Playlist

Make your own Playlist by genre or artist.

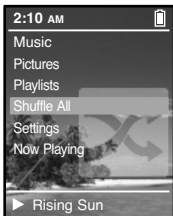
Playlists transmitted from Windows Media Player 10 are displayed in the <Playlists> menu. Please refer to WMP10 for transferring Playlists.



- 1 Press and hold the [↶] button to move to the Menu screen.**
- 2 Tap on the [⋮] to select <Music>, then press the [Touch Pad].**
 - The Music Menu will appear.
- 3 Tap on the [⋮] to select <Playlists>, then press the [Touch Pad].**
 - The Playlist(s) will appear.
- 4 Tap on the [⋮] to select the <Playlist> of your choice, then press the [Touch Pad].**
 - The music files saved in the selected Playlist will appear.
- 5 Tap on the [⋮] to select a music file to play, then press the [Touch Pad].**
 - The music file will start playing.

Shuffle Play (Random Repeat)

Shuffle Play All Music

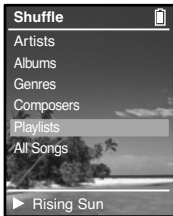


- 1 Press and hold the [↶] button to move to the Menu screen.
- 2 Tap on the [⋮] to select <Shuffle All>, then press the [Touch Pad].
 - Music files will appear.
- 3 Tap on the [⋮] to select a music file to play, then press the [Touch Pad].
 - The file selected, then all music files contained on the player will start playing in random order.

Shuffle Play (Random Repeat) (Continued)

Shuffle Play by Type

E.g. Shuffle Play by Artist



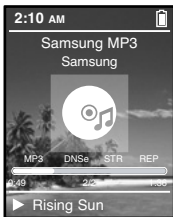
Shuffle Menu

- <Artists> : To play by artist
- <Albums> : To play by album
- <Genres> : To play by genre
- <Composers> : To play by composer
- <Playlists> : To play by Playlist
- <Shuffle> : To play continuously at random
- <All Songs> : To play in numeric or alphabetical order

- 1** Press and hold the [↶] button to move to the Menu screen.
- 2** Tap on the [⋮] to select <Music>, then press the [Touch Pad].
 - The Music Menu will appear.
- 3** Tap on the [⋮] to select <Shuffle>, then press the [Touch Pad].
 - The Shuffle Menu will appear.
- 4** Tap on the [⋮] to select <Artists>, then press the [Touch Pad].
 - Artist list will appear.
- 5** Tap on the [⋮] to select an artist, then press the [Touch Pad].
 - The music files for the selected artist will appear in random order.
- 6** Tap on the [⋮] to select a music file to play, then press the [Touch Pad].
 - The music files under that particular <Artist> will start playing continuously in random order.

Checking the Music Information

You can move to the Music Info screen to check the music currently playing.



- 1 Press and hold the [↶] button to move to the Menu screen.
- 2 Tap on the [⋮] to select <Now Playing>, then press the [Touch Pad].
 - The music information screen for the track currently playing will appear.



NOTE

- Pressing [Touch Pad] will cycle through various Now Playing screens.

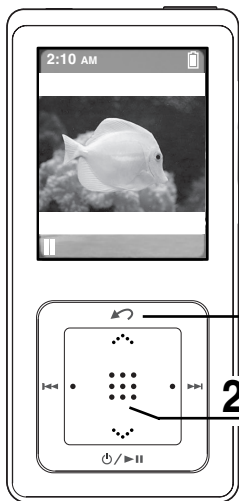
Chapter 4. | Picture Viewing

Picture Viewing	33
Picture Enlarging/Slideshow Viewing ...	34

■ Before you start!

Transfer picture files to the player using WMP10. For further details, refer to WMP10 software's Help section.

Picture Viewing



1 Press and hold the [↶] button to move to the Menu screen.

2 Tap on the [⋮] to select <Pictures>, then press the [Touch Pad].

- The Picture Folder list will appear.
Tap on the [⋮] to select a folder, then press the [Touch Pad] to display the pictures.

3 Tap on the [⋮] to select the picture file of your choice, then press the [Touch Pad].

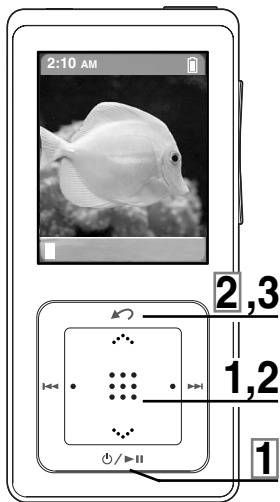
- The selected file will appear.
- Large pictures may take longer to display.



NOTE

- Press the [◀▶▶] button while viewing a picture to display the previous or next picture.
- Press and hold the [Touch Pad] button while viewing a picture to make it the background of the player.

Picture Enlarging/Slideshow Viewing



Picture Enlarging

- 1** Press the [Touch Pad] in the Picture Viewing mode.
 - The picture will be gradually enlarged (2x/3x/4x) each time the [Touch Pad] is pressed.
- 2** Touch the [Touch Pad] lightly and slide up,down,left or right to move around the enlarged picture.
 - You can move to the area of your choice.
- 3** Press the [↶] button to cancel the enlargement.
 - The picture will be gradually downsized each time the [↶] button is pressed.

Slideshow Viewing

- 1** Press the [⏻/▶||] button in Picture Viewing mode.
 - The slideshow will start.
- 2** Press the [↶] button to stop the slideshow.



NOTE

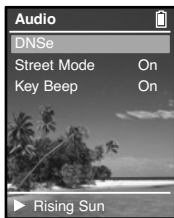
- Please refer to P38 for set the Start Time or interval of the Slideshow.

Chapter 5. Setup

Setup	36
Audio Setup	36
Display Setup	37
Slideshow Setup	38
Repeat Setup	39
Timer Setup	40
Language Setup	41
Reset	42
Checking the System Information	43

Audio Setup

You can set detail functions and button sounds for music play.



1 Press and hold the [↶] button to move to the Menu screen.

2 Tap on the [⋮] to select <Settings>, then press the [Touch Pad].

- The Settings screen will appear.

3 Tap on the [⋮] to select <Audio>, then press the [Touch Pad].

- The Sound Settings Menu will appear.

4 Use the [Touch Pad] to select and set the desired functions.

What is DNSe?

- DNSe is a sound effect function for MP3 players developed by Samsung and consists of 3D and Street modes. The 3D adds a stereophonic sound effect to the music and the Street mode provides an automatic volume control function that amplifies quiet sounds in noisy street environments.

- <DNSe>: You can select a suitable sound for each music genre. Select one from <Normal> <3D-Club> <3D-Stage> <3D-Studio> <Ballad> <Classical> <Jazz> <Dance> <House> <R & B> or <Rock>.
- <Street Mode>: Enables clear sound quality outdoors. Select either <Off> or <On>.
- <Key Beep>: Enables button sounds. Select either <Off> or <On>.



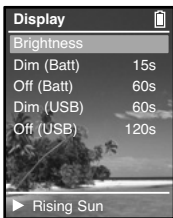
NOTE

Button functions for Setup


- Tap on the [⋮] to move up or down in the current Menu.
- Press the [Touch Pad] to select a Menu and save.
- Press the [↶] button to move to the previous screen.

Display Setup

You can adjust the brightness and the turn-off time for the screen display.



1 Press and hold the [] button to move to the Menu screen.

2 Tap on the [] to select <Settings>, then press the [Touch Pad].

- The Settings screen will appear.

3 Tap on the [] to select <Display>, then press the [Touch Pad].

- The Display Setup Menu will appear.

4 Use the [Touch Pad] to select and set the desired functions.


- <Brightness> : You can adjust the brightness for the screen display.
Tap on the left side of the [Touch Pad] to darken, or on the right side of the [Touch Pad] to brighten.
- <Dim(Batt)> : When running on battery power, the screen display will darken if none of the buttons have been pressed for a preset period of time.
Select either <- (Always On)> <15s> <30s> <60s> or <120s>.
- <Off(Batt)> : When running on battery power, the screen display will be automatically turned off if none of the buttons have been pressed for a preset period of time.
Select either <- (Always On)> <15s> <30s> <60s> or <120s>.
- <Dim(USB)> : When connected via USB, the screen display will dim if none of the buttons have been pressed for a preset period of time.
Select either <- (Always On)> <15s> <30s> <60s> or <120s>.
- <Off(USB)> : When connected via USB, the screen display will be automatically turned off if none of the buttons have been pressed for a preset period of time.
Select either <- (Always On)> <15s> <30s> <60s> or <120s>.

Slideshow Setup

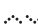
You can set the Start Time or interval of the slideshow.



1 Press and hold the [] button to move to the Menu screen.

2 Tap on the [] to select <Settings>, then press the [Touch Pad].

- The Settings screen will appear.

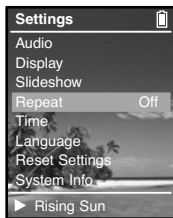
3 Tap on the [] to select <Slideshow>, then press the [Touch Pad].

- The Slideshow Setup Menu will appear.

4 Use the [Touch Pad] to select and set the desired functions.

- <Start(Batt)> : When running on battery power, you can set the start time of the slideshow after the Menu and function screen disappears.
Select either <Off> <1m> <5m> <10m> or <15m>.
- <Start(USB)> : When connected via USB, you can set the start time of the slideshow after the Menu and function screen disappears.
Select either <Off> <1m> <5m> <10m> or <15m>.
- <Slide Time> : You can set the interval for the slideshow.
Select either <2s> <5s> <15s> <30s> or <60s>.
- <Shuffle> : All picture files contained on the player will start viewing in random order.
Select either <Off> or <On>.

Repeat Setup



- 1** Press and hold the [↶↷] button to move to the Menu screen.
- 2** Tap on the [⋮] to select <Settings>, then press the [Touch Pad].
 - The Settings screen will appear.
- 3** Tap on the [⋮] to select <Repeat>.
- 4** Press the [Touch Pad] to select the desired play mode.
 - You can select <Off> (Cancel Repeat) <One> (Single Track Repeat) or <All> (Repeat All).

Timer Setup



1 Press and hold the [↶] button to move to the Menu screen.

2 Tap on the [⋮] to select <Settings>, then press the [Touch Pad].

- The Settings screen will appear.

3 Tap on the [⋮] to select <Time>, then press the [Touch Pad].

- The Time Setup Menu will appear.

4 Use the [Touch Pad] to select and set the desired functions.

- <Sleep Timer> : You can set the power to turn off automatically after a preset period of time. The player will automatically turn off after the time you set. Select either <Off> <90m> <60m> <45m> <30m> or <15m>.
- <Set Time> : You can set the current time. Press the [Touch Pad] to move to <Hour, Minute, AM/PM>, then tap on the [⋮] to set the time. Press the [Touch Pad] after setup is complete.

Language Setup



- 1 Press and hold the [↵] button to move to the Menu screen.
- 2 Tap on the [⋮] to select <Settings>, then press the [Touch Pad].
 - The Settings screen will appear.
- 3 Tap on the [⋮] to select <Language>, then press the [Touch Pad].
 - The Language Settings screen will appear.
- 4 Tap on the [⋮] to select a language of your choice, then press the [Touch Pad].
 - The language of your choice is set and you are returned to the previous screen. Select either <English>, <Deutsch>, <Español> or <Français>.

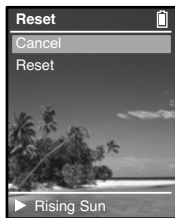


NOTE

- The supported languages can be changed or added.

Reset

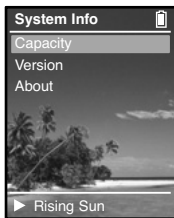
You can reset all settings to the default value.



- 1** Press and hold the [↵] button to move to the Menu screen.
- 2** Tap on the [⋮] to select <Settings>, then press the [Touch Pad].
 - The Settings screen will appear.
- 3** Tap on the [⋮] to select <Reset Settings>, then press the [Touch Pad].
 - The Reset Confirm screen will appear.
- 4** Tap on the [⋮] to select either <Cancel> or <Reset>, then press the [Touch Pad].
 - Select <Cancel> to maintain the previous setup.
 - Select <Reset> to re-initialize the setup.

Checking the System Information

You can check the memory, product version and copyright information.



1 Press and hold the [↵] button to move to the Menu screen.

2 Tap on the [⋮] to select <Settings>, then press the [Touch Pad].

- The Settings screen will appear.

3 Tap on the [⋮] to select <System Info>, then press the [Touch Pad].

- The System Info screen will appear.

4 Check the necessary information with the [Touch Pad].

- <Capacity> : You can check the total memory, memory available, total number of songs, albums or artists information.
- <Version> : You can check the firmware version.
- <About> : You can check the copyright information.



CAUTION

■ Regarding the Built-In Memory

The actual built-in memory available is slightly less than indicated as the internal firmware uses a portion of the memory.

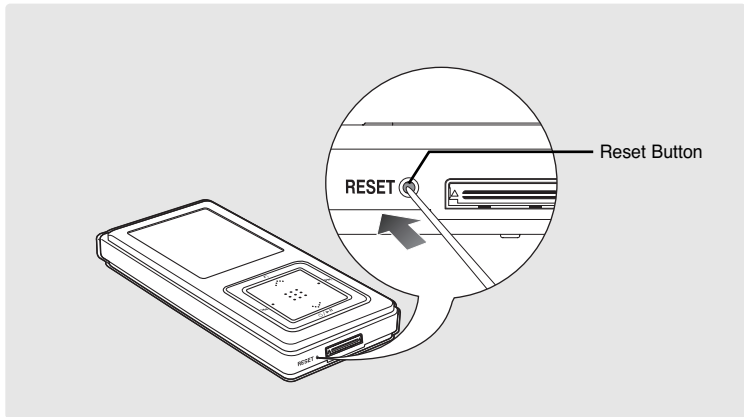


Chapter 6 | Troubleshooting & Appendix

System Reset	45
Troubleshooting	46
Menu Tree	49
Product Specifications	50
License	51
Contact SAMSUNG WORLD WIDE	52

System Reset

If a product malfunction occurs, you can re-initialize the system by pressing the Reset button.



Press the Reset Button at the bottom of the product with a pointed object such as a safety clip.

- The system will be initialized.
- The Reset function will not delete data stored in the built-in memory.

Troubleshooting

If a malfunction is experienced, check the following.

If the problem persists, contact a Samsung Service Center near you.

Problem	Check points & Troubleshooting
Power will not turn on.	<ul style="list-style-type: none">■ Power will not turn on if the batteries are fully discharged. Recharge the batteries and turn the power on again.
Buttons do not work.	<ul style="list-style-type: none">■ Check if the [HOLD] switch is in the ◀ HOLD position.■ Check if you pressed the right button, then press again.■ Press the Reset Button.
The screen will not turn on.	<ul style="list-style-type: none">■ If you set <Off(Batt)> or <Off(USB)> in <Settings> in the <Display> Menu, the screen may look very dim. Press a button to turn on the screen.■ The screen may not be visible under direct sunlight.
Power is turning off.	<p>The power is automatically turned off when the battery is fully discharged. Recharge the battery.</p>
Battery life differs from the Manual.	<ul style="list-style-type: none">■ The battery life shortens slowly over time as it is a consumable item.■ Product life may be shortened when left for extended periods in low or high temperatures.

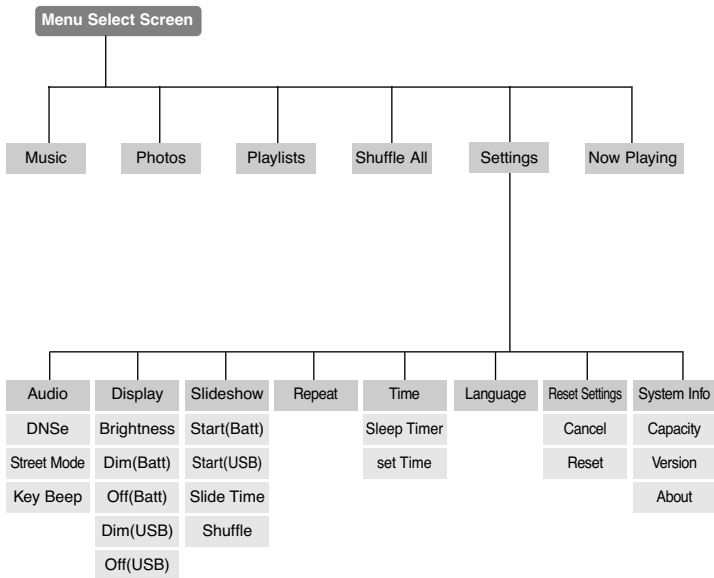
Problem	Check points & Troubleshooting
Playing is disabled.	<ul style="list-style-type: none">■ Check if the available file has been saved in the memory.■ Check if the music file is damaged.■ Check if there is enough battery power.
File upload is disabled.	<ul style="list-style-type: none">■ Check if the USB cable is securely connected. Reconnect if necessary.■ Check if the memory is full.■ Press the Reset button.
Files or Data are Missing.	Check if the USB cable has been disconnected during file or data transmission. If this is the case, it may cause serious damage not only to files/data but also to the product. You have to be extra cautious as Samsung is not held responsible for data loss.
Abnormal Play Time Display during Play.	Check if the file is in VBR (Variable Bit Rate) format.
Abnormal Display of File Name.	Move to <Settings> → <Language> in the Menu screen and set an appropriate language.

Troubleshooting (Continued)

Problem	Check points & Troubleshooting
Program Malfunction	Please check if your PC requirements are met.
Connection to your PC is disabled.	Press <Start> on the toolbar of your PC to run Windows Update. Select Key Updates and Service Packs, then update all. Reboot your PC and reconnect.
The product is hot.	Heat may be generated during recharging. This has no effect on the product life or functions.

Menu Tree

You can quickly view the menu structure.



Product Specifications

Model Name		YP-Z5
Power		3.7V (Li-Polymer Rechargeable)
Built-in Battery Power		820 mAh
File	Compatibility	AUDIO: MPEG1/2/2.5 Layer3(8kbps~320kbps, 8kHz~48kHz), MPEG1 Layer2(32kbps~384kbps, 32kHz, 44.1kHz, 48kHz), WMA(8kbps~192kbps,8kHz~44.1kHz) IMAGE: JPEG(ISO/IEC 10918-1/Annex F-Sequential DCT-based mode of operation)
Earphone Output		20mW(France 5mW/CH)(16Ω)
Output Frequency Range		20Hz~20KHz
Noise Ratio		92 dB with 20kHz LPF(based on 1KHz 0 dB)
Play Time		35 hours of music play (LCD Off, Volume 27)
File Transmission Speed		Max 40 Mbps
Temperature Range for Operation		5~35 °C (23~95°F)
Case		Aluminum
Weight		56g (inc. battery)
Dimension (WxHxD)		2GB :42.2 X 89.8 X 11.4mm 4GB :42.2 X 89.8 X 12.3mm

- The contents of this Manual are subject to change without prior notice for further improvement.

License

The product unit accompanying this user manual is licensed under certain intellectual property rights of certain third parties. This license is limited to private non-commercial use by end-user consumers for licensed contents.

No rights are granted for commercial use. The license does not cover any product unit other than this product unit and the license does not extend to any unlicensed product unit or process conforming to ISO/IEC 11172-3 or ISO/IEC 13818-3 used or sold in combination with this product unit. The license only covers the use of this product unit to encode and/or decode audio files conforming to the ISO/IEC 11172-3 or ISO/IEC 13818-3. No rights are granted under this license for product features or functions that do not conform to the ISO/IEC 11172-3 or ISO/IEC 13818-3.

Contact SAMSUNG WORLD WIDE

If you have any questions or comments relating to Samsung products, please contact the SAMSUNG customer care center.

Country	Customer Care Center	Web Site
CANADA	1-800-SAMSUNG (7267864)	www.samsung.ca
MEXICO	01-800-SAMSUNG (7267864)	www.samsung.com/mx
U.S.A	1-800-SAMSUNG (7267864)	www.samsung.com
ARGENTINE	0800-333-3733	www.samsung.com/ar
BRAZIL	0800-124-421	www.samsung.com/br
CHILE	800-726-7864(SAMSUNG)	www.samsung.com/cl
COSTA RICA	0-800-507-7267	www.samsung.com/latin
ECUADOR	1-800-10-7267	www.samsung.com/latin
EL SALVADOR	800-6225	www.samsung.com/latin
GUATEMALA	1-800-299-0013	www.samsung.com/latin
JAMAICA	1-800-234-7267	www.samsung.com/latin
PANAMA	800-7267	www.samsung.com/latin
PUERTO RICO	1-800-682-3180	www.samsung.com/latin
REP. DOMINICA	1-800-751-2676	www.samsung.com/latin
TRINIDAD & TOBAGO	1-800-7267-864	www.samsung.com/latin
VENEZUELA	1-800-100-5303	www.samsung.com/latin
BELGIUM	02 201 2418	www.samsung.com/be
CZECH REPUBLIC	844 000 844	www.samsung.com/cz
DENMARK	38 322 887	www.samsung.com/dk
FINLAND	09 693 79 554	www.samsung.com/fi
FRANCE	08 25 08 65 65 (0,15€/min)	www.samsung.fr
GERMANY	01805 - 121213 (€ 0,12/Min)	www.samsung.de

Contact SAMSUNG WORLD WIDE

Country	Customer Care Center	Web Site
HUNGARY	06 40 985 985	www.samsung.com/hu
ITALIA	199 153 153	www.samsung.com/it
LUXEMBURG	02 261 03 710	www.samsung.lu
NETHERLANDS	0900 20 200 88	www.samsung.com/nl
NORWAY	231 627 22	www.samsung.com/no
POLAND	0 801 801 881	www.samsung.com/pl
PORTUGAL	808 200 128	www.samsung.com/pt
SLOVAKIA	0850 123 989	www.samsung.com/sk
SPAIN	902 10 11 30	www.samsung.com/es
SWEDEN	08 585 367 87	www.samsung.com/se
U.K	0870 242 0303	www.samsung.co.uk
RUSSIA	8-800-200-0400	www.samsung.ru
UKRAINE	8-800-502-0000	www.samsung.com/ur
AUSTRALIA	1300 362 603	www.samsung.com/au
CHINA	800-810-5858 , 010- 6475 1880	www.samsung.com.cn
HONG KONG	2862 6001	www.samsung.com/hk
INDIA	3030 82821600 1100 11	www.samsung.com/in
INDONESIA	0800-112-8888	www.samsung.com/id
JAPAN	0120-327-527	www.samsung.com/jp
MALAYSIA	1800-88-9999	www.samsung.com/my
PHILIPPINES	1800-10-SAMSUNG (7267864)	www.samsung.com/ph
SINGAPORE	1800-SAMSUNG (7267864)	www.samsung.com/sg
THAILAND	1800-29-3232 / 02-689-3232	www.samsung.com/th
TAIWAN	0800-329-999	www.samsung.com/tw
VIETNAM	1 800 588 889	www.samsung.com/vn
SOUTH AFRICA	0860 726786 (SAMSUNG)	www.samsung.com/za
U.A.E	800SAMSUNG (7267864)	www.samsung.com/mea

— EUROPE ONLY —

This marking shown on the product or its literature, indicates that it should not be disposed with other household wastes at the end of its working life.

To prevent possible harm to the environment or human health from uncontrolled waste disposal, please separate this from other types of wastes and recycle it responsibly to promote the sustainable reuse of material resources.

Household users should contact either the retailer where they purchased this product, or their local government office, for details of where and how they can take this item for environmentally safe recycling.

Business users should contact their supplier and check the terms and conditions of the purchase contract.

This product should not be mixed with other commercial wastes for disposal.

