

P/N : SAF190M0B2

mobiBLU[®]
<http://www.mobiblu.com>

mobiBLU[®]

User's Manual

DAH-1900



- ※ Please read this user's manual carefully before getting started.
- ※ Recharge the built-in battery using the USB cable supplied with the device before getting started.

03 **Getting Started**

Safety Precautions/ Special Features/
Specifications/ Accessories/ Location of Controls/
Buttons/ LCD/ Power/ Recharge/ Connecting
(Disconnecting) to (from) a PC / Resetting

24 **Basic Functions**

Power on-off / Modes/
Navigation (Folder search in a file playing)/
Menus/ Hold/ Clock

30 **Music**

Listening to Music/ File Selection/ EQ/
Section Repeat/ Play Mode Setting

35 **Convenient Functions**

Playlist/ Delete-File/
Bookmark/ View-Lyric

42 **Recording**

Voice/ Line - in

FM Radio 46

FM Radio/ Region/ Frequency-search & save
Preset Mode/ Preset Delet
Recording FM program/ Sound quality
Programmed Recording

Menus 58

Menu List/ Menu Buttons/ Setting
Recording/ Display/ Play/ Timer
Watch/ EQ/ SRS/ About

Program 76

Program CD installation/
File Download-Upload/
Format

Support 86

"It may not be a problem!"
FCC RF INTERFERENCE STATEMENT
Warranty Card



Getting Started

Safety Precautions	4
Special Features	7
Specifications	9
Accessories	10
Location of Controls	11
Buttons	13
LCD	15
Power	17
Recharge	19
Connecting to a PC	20
Disconnecting from the PC	21
Resetting	23

- * Carefully read this part before using the device.
- * The Safety Precautions are classified into three categories; Danger, Warning and Caution.
- * We are not responsible for any damage or loss if the device was not used in conformity with these precautionary provisions.



Danger

The user may be in danger of death or a major injury if he/she does not use the device in conformity with the provisions stated in this mark.



Warning

The user may be subject to a major injury if he/she does not conform to the provisions disclosed in this mark.



Caution

The user may be subject to a minor injury or property damage when he/she does not conform to the provisions of this mark.

Safety Precautions

⚠ Danger

- Prevent the Device from dropping or receiving excessive shock. It may damage the Device. Fire or electric shock may take place with the damaged Device.



- Don't put the Device close to any heating device or in direct sunlight. It may explode.



- Don't use the earphone set while riding a bicycle or motorcycle, or driving a car.



- Don't touch the device with a wet hand.



- Don't disassemble or modify the device on your own discretion.



⚠ Warning

- Listening to sound sources with a high volume may cause a hearing disorder.



- Keep the device away from children's access. Parental attention is advised for children's use.



- Avoid humidity and dusty areas



Safety Precautions

- Immediately reset the device when it generates excessive heat or if there is a burning smell, and then contact our A/S agent for repair.



- Be cautious and avoid the headphones or earphones from being caught between doors.



⚠ Caution

- Never use any chemicals or cleanser to clean the device as this may damage the surface of the device.



- The manufacturer is not responsible for any damaged data stored in the device if the device error was caused by the user's carelessness. The data stored in the device may be deleted or damaged during A/S.



- Distributing music files without authorization is against copyright law.



- Continual recharge after the completion of battery recharge may damage the Device.



- Use only the AC adapter supplied with the Device.



1. It lasts a month!

You can use the device for up to 150 hours by only one battery recharge. Practically you can recharge the battery only once in a month by simply connecting with a PC through a USB cable.

2. OLED Display

Enjoy more dynamic and sharp-cut images with the OLED display system. It provides you with even elegant screens, better clarity and more beauty.

3 Multi-Codec

The device supports Multi-codec function which allows you to enjoy not only MP3 files but also other digital files including WMA.

4. SRS

This SRS function offers you not only 3D surround music but deep and abundant tone with the aid of the enhanced bass.

5. Clock

You may utilize the Device as a clock, stopwatch and an alarming device. You can also program the auto recording of a Radio program.

6. Bookmark

This function allows you to search and enjoy a certain part of the file.

7. Auto/ Manual Lyric Streaming

You can simply write the lyrics for your favorite songs and they will appear on the display. This device supports an easy lyric writing function with the aid of the Auto Lyric system. You may also edit lyrics as per your need.

8. Playlist

You can make a playlist with your favorite songs. Enjoy the music of your taste whenever you so desire.

9. LCD Pivot

You can turn the screen up or down with this function.

10. Voice Recording

The built-in high performance microphone enables you to use many functions of a professional voice recorder.

11. Music Recording

The device enables you to record sound sources from a FM radio, CD player, Walkman or other external audio devices.

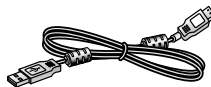
12. Language-learning Aid

With all the convenient and essential functions for language-learning such as section-repeat, sectional FF/REW, resumption, bookmark and more, the device enables you to study languages very effectively.

Functions	Items	Specifications
FM Tuner	FM Frequency Range	Worldwide : 87.50MHz ~108.00MHz Japan : 76.00MHz ~108.00MHz
	Headset Output	Max. 7mW (16 Ω) at Max. Volume
	S/N Ratio	50dB
	Antenna	Headset/earphone code antenna
Audio	Frequency Characteristics	20Hz ~ 20KHz
	Headset Output	Max. 15mW (16 Ω) at Max. Volume
	S/N Ratio	90dB
Supporting Files	Supporting file types	MP3, WMA
	Bit Rate	MP3: 8 ~ 320Kbps WMA: 32 ~ 192Kbps
USB	Download speed	20Mbps
Recording period		Audio: approx. 1040minutes (based on 256MB at 32Kbps rate)
Max. Playback hours		153 hours
Operating Temperature		-5 $^{\circ}$ C~70 $^{\circ}$ C
Size (W*H*D)		65mm X 44.5mm X 21.3mm
Weight (battery inclusive)		66g
Battery (built-in)		Li - Ion

* The depicted images of the accessories below may look slightly different to their actual look.

* The accessories below can be changed without prior notice.



USB Cable



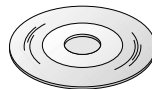
Line-in Cable

Portable Case
(option)

Earphone



Neck Strap

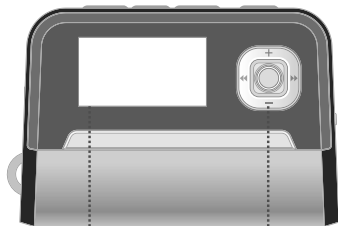


Program CD



User's Manual

Front



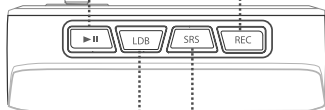
LCD

Menu search/ Navigation/
File-track search or move/
Volume

Top

Power/ Play
/ Pause

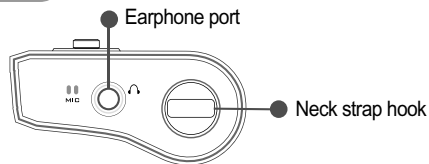
Record/ Section Repeat/
Play mode change



View lyric/ Clock/
Mode change

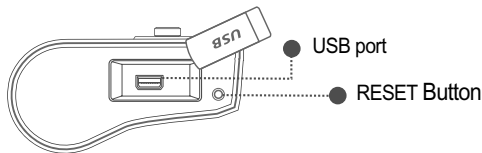
EQ/ Bookmark

Side



Earphone port

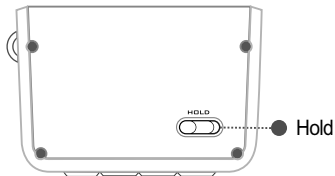
Neck strap hook



USB port

RESET Button

Back



Hold



- * Power ON/OFF
- * Play/ Pause



- * View lyrics in 'music playing'
- * Mode Change
- * View the time in 'pause or stop'



- * EQ/SRS setting
- * Bookmark



- * Voice recording, Music recording, FM Radio recording
- * A-B section repeat in 'play'
- * Play mode change
- * Cancel button



- * Entering navigation/menu mode
- * Save & Enter



- * Move to the previous/next file
- * Search in the file
- * Search
 - move from navigation/menu mode to main <-> sub phase
 - Menu: selecting set value in the last sub phase.



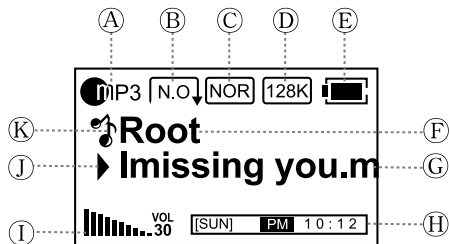
- * Volume increase or decrease
- * Search
 - move from navigation/menu to up or down menus.



- * Hold all key functions.

Music Mode

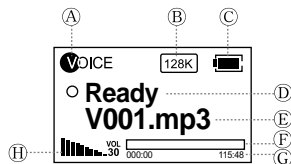
- You can enjoy music files in this mode.



- | | |
|---|-------------------------------|
| A: 'Playing' file format
(Play/ Pause/ Stop) | F: Folder name |
| B: Play mode | G: File name/ ID3 Tag |
| C: EQ | H: Graphic EQ |
| D: Bitrate/ LDB | I: Volume |
| E: Battery capacity | J: Status (Play/ Pause/ Stop) |
| | K: Mode |

Recording Mode

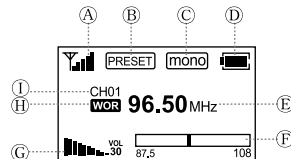
- You can record voice of line-in sound source in the mode.



- | | |
|--|--|
| A: Sound source (voice/ line-in/ FM) | E: File name |
| B: Bitrate | F: Process bar |
| C: Battery capacity | G: 'Recording' elapsing time/ time to go |
| D: Recording status
(ready/ recording/ pause) | H: Volume |

FM Mode

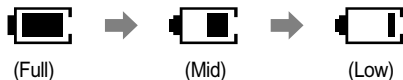
- You can listen to FM radio in this mode.



- | | |
|----------------------------|------------------------------------|
| A: Signal receiving/ ready | F: Frequency search/ Preset search |
| B: Preset/scan | G: Volume |
| C: Stereo/Mono | H: Territory |
| D: Battery capacity | I: Preset channel no. |
| E: Frequency | |

Battery indicator for remaining capacity

When initially turning on the device, the battery status may vary. It is stabilized 5 to 6 seconds after the power is ON.



※Recharge the battery using a USB cable in the following cases;

- ① “Low Battery” displays on LCD
- ② The button is not functioning correctly
- ③ LCD is not activated by pushing the power button.

Battery Type	MP3 playing
Lithium-Ion	153hours (1620mAh)

■ Playback hours

- ① Playback hours with the built-in batter: 153hours
- ② MP3: 128 Kbps
- ③ Volume: based on 20
- ④ The above results were derived from the test on the built-in Lithium Ion Battery and are subject to change according to the using condition.

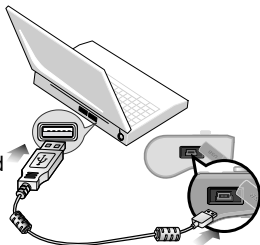
Built-in Battery

- Don't use damaged built-in battery.
- Avoid excessive recharge longer than specified hours (4hours) to prevent fire.
- Fully recharge the battery when trying to use it for the first time or after a long-term disuse.
- When the 'using hours' of the battery gets shorter in comparison with recharging hours, replace the battery.
- Since the battery supplied with the device is consumable the using hours of it slowly gets reduced.
- The built-in battery can be recharged about 500 times.
- Avoid any metal part from contacting DC converter or built-in battery to avoid unexpected fire or electric shock.

Disposal

The Device includes a built-in Lithium-ion battery. The battery is recyclable so please return it to nearest 'recycle center' when you dispose the Device. Don't disassemble the device for disposal.

1. Connect the device into a PC using the USB cable supplied in the package.



2. The device can be recharged while it's play music.

3. Press **LDB** shortly in 'Pause/Stop' to check the progress of recharging. The device displays "COMPLETE" at the completion of the recharge.

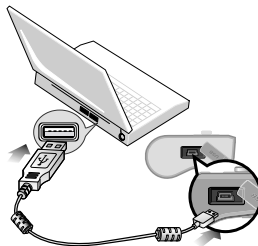
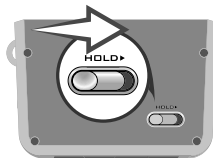


4. Disconnect the USB cable from the computer (safe hardware removal; see page 21)

!Note

- If the Hold key is activated in recharge process, the USB connection is also effective to down/upload the files.
- Recharge the device using a USB cable when LCD is not activated.
- It takes approximately 4 hours to completely recharge a completely consumed battery.

1. Place the HOLD key on upper position to activate the HOLD.



2. Connect the device into a PC using a USB cable

3. The screen displays the icon on the left if the connection is correctly made.



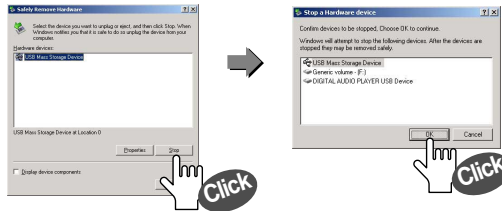
!Note

- Don't disconnect the device from the PC when "Don't Disconnect" message is displayed on LCD. It may cause an unexpected error to occur.

1. Double click on the green arrow on the right-bottom of the initial Screen.



2. Click on Stop and OK (enter) consecutively after selecting "USB Mass Storage Device"



3. Click on OK (enter) on the "Safe Hardware Removal" message box followed by cable removal.

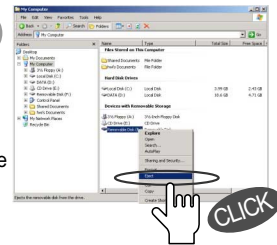


!Note

- What's USB (Universal Serial Bus)? This is the new data connection system between a PC and its peripheral devices.
- Connect the USB cable supplied with the Device into a USB port in PC. An unexpected error can occur when connecting the cable to the USB port located in the front face of the PC or USB hub.
- The Device can not be identified in the PC installed with Windows 98SE or lower version. Install the program CD supplied with the Device in the PC.

In the case with Windows 98SE

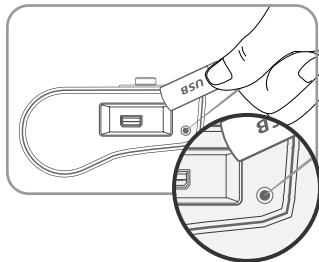
Open "My Computer" or "Windows Search" and click on "Removable Disk." click on "Remove" using the right mouse button and then remove the USB cable.




!Note

- Removing the cable without following the above instructions may cause a fatal error in the PC or the device.
- Removing the cable while downloading or uploading files, or formatting the device may cause a fatal error in the PC or the device.

1. If the player malfunctions such as stopping or operating abnormally, push the reset button with a pointed thing.



2. After power is turned off, pressing the  long will turn the power on.


!Note

- Pressing the reset button with a pointed thing pin too deep will cause a damage to the player.
- Reset will not erase or delete the music songs. Reset is use to restart the MP3 player if the player malfunctions.

Basic Functions

Power on-off	25
Modes	26
Navigation (Folder search in a file playing)	27
Menus	28
Hold/ Clock	29

Power ON

Press  and hold to turn the power on.


Note

- The device is not activated when it is in HOLD mode. ("HOLD" is displayed)
- When the battery is discharged the display shows "Low Battery" and the device is not activated.
- Recharge the battery when LCD is not activated.

Power OFF

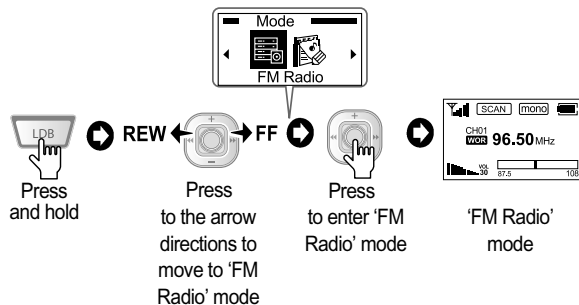
Press  and hold to turn the power off.

Note

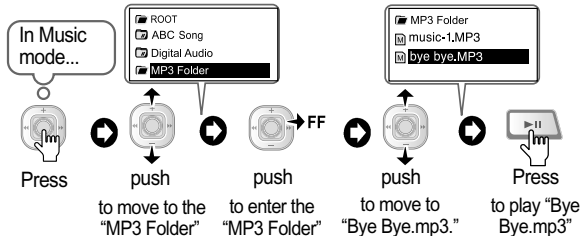
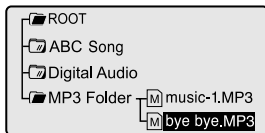
- When no button manipulation in the pause or stop condition is made within the set period of time for "Auto Power Off," it automatically turns off the power.
- When you try to play the file again by pressing , following the restart of the device, it completely recovers all previous settings. All track numbers, the equalizer and other settings are recovered.
- Regardless of the "memory for previous setting" the volume level stored in the device will be 10 if the original volume level before the turning off was ranged from 0 to 10 while it is 25 if the original volume level was ranged from 25 to 30.

- There are all 5 modes programmed in the device; Music playing, Voice recording, Music recording, FM Radio and Playlist.
- Different functions are available for each mode.

Example) How to enter FM radio mode



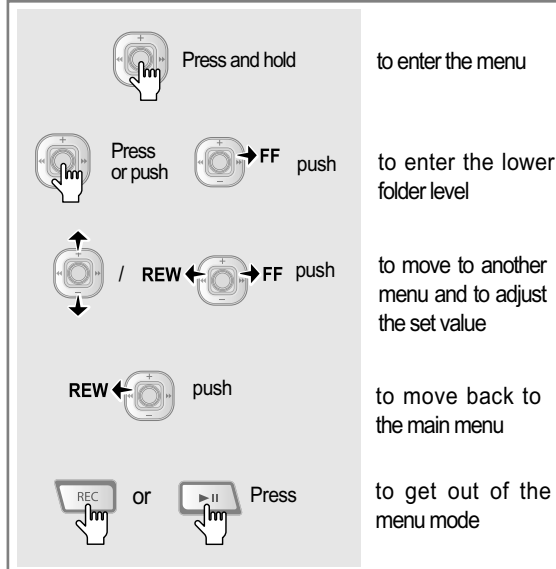
Example) when trying to play "bye bye";



To move to the upper folder level;

- REW to the arrow direction to move back to the upper level
push

- REC to get out of the Navigation mode.
Press



!Note

- See Page 61 for details about the menu.

HOLD



1. Place the button on the side of the device to the arrow direction to hold all key functions
2. No key will function while in hold status.

!Note

- Power can not be turned on when it is on Hold. (a HOLD indication is displayed shortly).

View Time

In the modes of Music, Stop and Pause



Press View time press any button to cancel the function.

!Note

- The view time will be canceled on the display when there is no button manipulation for more than 5 seconds.
- Press to check the recharging progress while the device is being recharged using a USB cable.

Music

Listening to Music.....	31
File Selection	32
EQ/Section Repeat	33
Mode Setting	34

Playing Music/ Stop

In Stop or Pause mode



In Play mode



Volume control



Going to other files

In Stop, Pause or Play modes




Searching a certain part in a file

In Play mode;



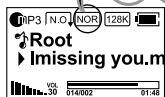
!Note

Press REW  to get back to the initial part of the file when the play elapsing time is within 5 seconds.

EQ

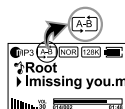


Press to change the EQ settings from Normal→Rock→Jazz
→Classic→Pop→Live→Dance through to SRS.



Section repeat

In Play status



Press to set "A" to set the section "A-B"

■ Press to cancel the section.

!Note

- The end of the file will be set for "B" if it is not specified.
- "B" can be only set from 1 second after "A."

In Play status;



Press and hold to change the mode among the following options; Normal/ Repeat1/ Repeat All/ Random/ Random All



Normal: plays music files once in correct sequence.



Repeat1 : repeats the current file continually.



Repeat All : repeats all files in correct sequence.



Random : plays all files once in random sequence.



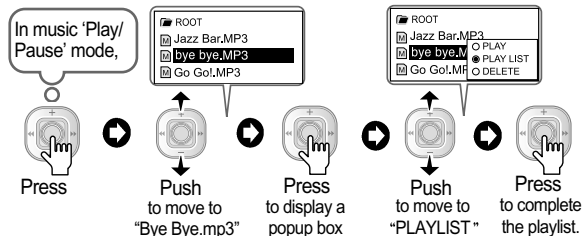
Random All : repeats all files continually in random sequence.

!Note

- The play modes can be set by entering 'Menu – Play – Play Folder (Folder All / Current Folder)' mode. (See Page 70)
- Regardless of the setting for Play Folder (Folder All / Current Folder), the number of files displayed on the device includes the currently-played file.

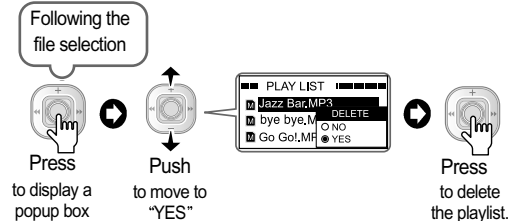
Writing Playlist

Example) when adding "Bye Bye.mp3" into a Playlist.



Deleting Playlist

- Enter the Playlist you want to remove. (Page 37)
- The original file is not deleted at the deletion of the playlist
- The Delete function is only available while in Stop/ Pause mode.



Convenient Functions

Playlist	36
Delete-File	38
Bookmark	39
Lyrics	41

Playing a Playlist



2 Following the file selection;

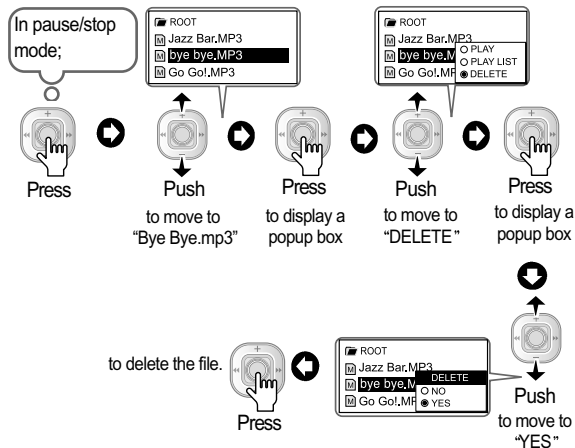


!Note

- Only the files added in the Playlist can be played in the mode of "Playlist."

- This enables you to delete the files stored in the device.

Example) when deleting the file "bye bye.mp3."



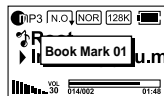
!Note

- Once the file is removed, it cannot be recovered.
- File deletion is only available in Stop/ Pause mode.

Setting Bookmark

In play mode;

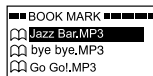
SRS

Press and
hold

Playing bookmarked file

In Stop/pause
mode;

SRS

Press
and holdto display the
bookmark list

Push

to arrow directions
to move to the file
to be playedPress
to play.

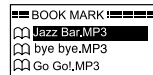
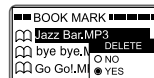
!Note

- Bookmarking is not available in Stop/pause mode.
- The maximum file number for "bookmark" is 10.
- Bookmark is available on Music mode only.

Deleting bookmarked file

In Stop/Pause
mode;

SRS

Press and
holdto display the
bookmarkPress
to move to the
file to be
removedPress
to pop up the
displayPress
to delete the
"bookmark."

Push

to move to
"YES"

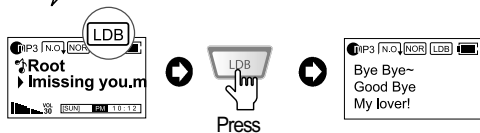
!Note


- The original file is not deleted at the deletion of the "bookmark."

Note

- The "Lyric" option is only available with the device when it is marked by the "Lyric Manager."
- You can only view the lyrics when the file is playing.

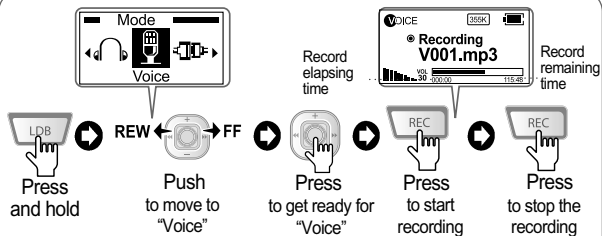
While the file marked with "Lyrics" are playing;






Press  again – to display the Music Play screen.

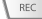
Recording

Voice	43
Line - in	44

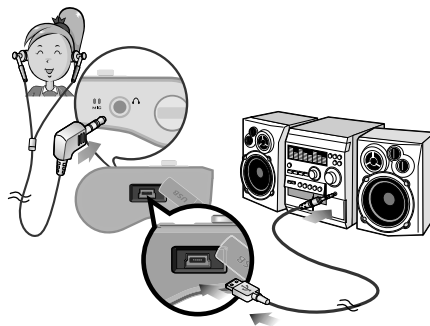


- Press  in the ready status to change the recording source. (e.g. Voice recording to Music recording)
- Press  button in the recording to pause and press the button again to resume.
- Press  button to listen to the recorded file.

Note

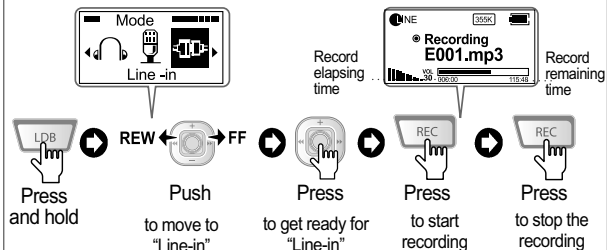
- Recorded files are stored in MP3 format in the VOICE folder in the following sequence; V001.MP3, V002.MP3...
- Press  and hold in Music, Stop or Pause mode to get into recording-ready mode.
- The recording will be interrupted when the memory gets full. The pre-recorded voice source only is stored in the memory in this incident.
- Sound quality may vary according to the distances from the sound source.
- In the case where the power is not enough to run the device, the recording may not be done correctly.
- You can not get out of the mode in pause (recording) mode.




- Connect the device into the external audio player with the Line-in cable supplied in the package.



Note

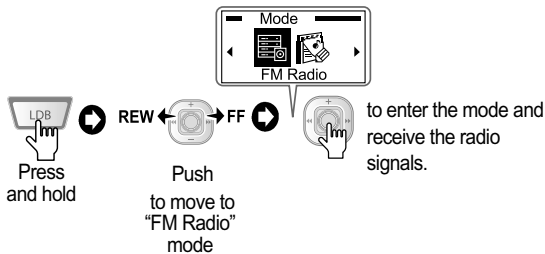
- Analog sound signals can be converted into digital sounds by recording the external audio sources with the Line-in cable supplied in the package.
- With the aid of an earphone set, you may listen to the music which is being recorded to the device (Loop back).



- Press  in voice recording "ready" mode to change the recording source. (Line - in → voice)
- Press  in the recording to pause and press the button again to resume.
- Press  to listen to the recorded file.
- You cannot get out of the recording mode while in pause (recording) mode.

FM Radio

FM Radio	47
Region	48
Frequency-search & save	49
Preset Mode	51
Preset Delet	52
Recording FM program	54
Sound quality	55
Programmed Recording	56



- Press in receiving the signals to get into the "ready."

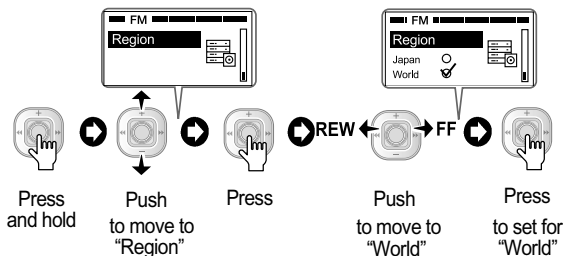


- Press any button in the "ready" condition to receive the signals again.

!Note

- The earphone takes the role of an antenna.

- This function helps you set the correct frequency ranges which are variable according to the countries.





- Japan : from 76.0 to 108.0MHz in 50Khz pitch
- World : from 87.5 to 108.0MHz in 50Khz pitch



!Note

- At the change of the territory, the previous territory will be initialized.

Frequency scanning

In FM scan mode;

REW  FF Push  to increase or decrease by 0.05MHz

REW  FF Push and hold  to continually increase or decrease the frequency

- The frequency with the higher receiving rates will be selected.
- The frequency band range will vary according to the Territory.

'Manual save' for frequency

Example) when saving the channel (frequency) 96.50MHz

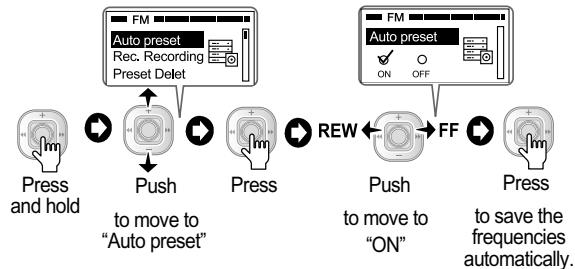
In FM search mode;

Select 96.50MHz   press  saving completed


!Note

- By entering the preset, you can enjoy the channel for 96.50MHz.
- Up to 20 channels can be saved.

'Auto preset' for frequency



!Note

- Push REW  FF to the arrow directions to interrupt the frequency scan.
- The mode will be automatically changed to the 'Preset' mode at the completion of the search.

Entering Preset Mode

In FM scan mode;



Press

➡ to enter 'Preset'

!Note

- You can scan the saved frequency by entering the Preset mode.

Preset Mode Search

In Preset mode;

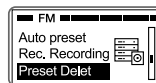


Push

➡ to increase/decrease the channel number

!Note

- You can't search the channels if there is no frequency stored.



Press and hold



Push



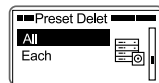
Press



you can delete all or some of channels

to move to "Preset Delete"

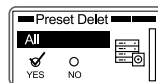
When deleting all frequencies;



Push to move to "All"



Press



Push to move to "Yes"



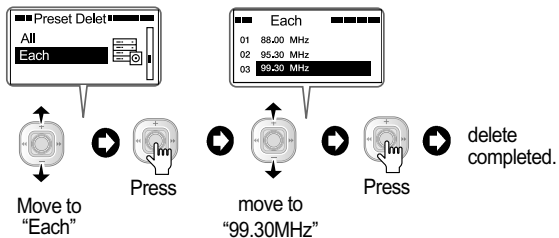
Press



to delete all stored channels.

When deleting a channel

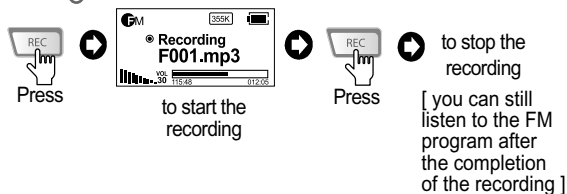
Example) when deleting the frequency "99.30MHz" stored in CH03;




- The frequency saved in the next channel moves to the empty channel (03).

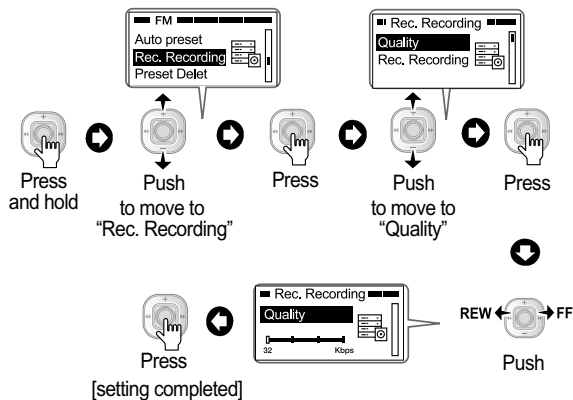
Recording FM Radio

In FM receiving status



- Press  in the recording to pause and press the button again to resume.
- Recorded sound sources are saved in MP3 format in FM folder in the following sequence; F001.MP3, F002.MP3.....
- You can listen to the recorded file by entering "Music" – "FM" folder.

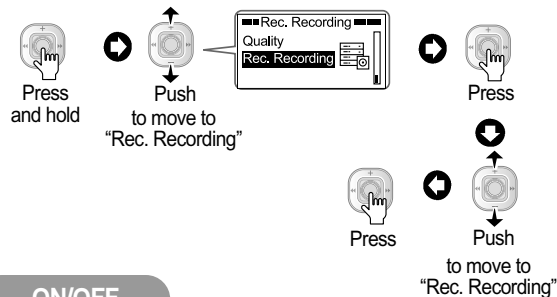
Quality



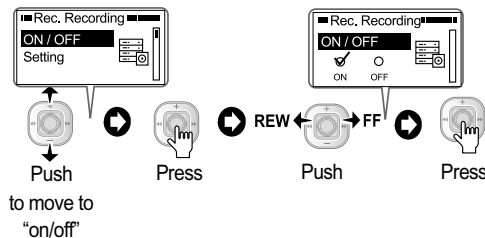
!Note

- When the sound quality is set for 'low' it takes only small memory space while 'high' quality takes larger space with lesser quality loss.

- You can set 'Rec. Recording' for any FM Radio program you desire by setting the date and time.

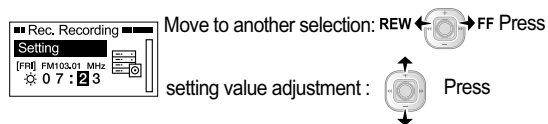
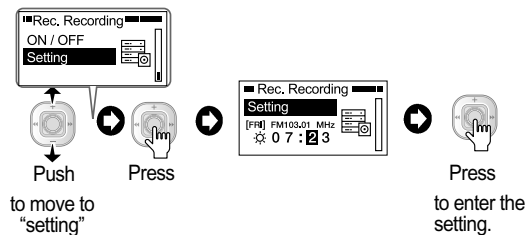


ON/OFF



- On: Programming the recording for specified date and time
- Off: Programming is not available.

Setting

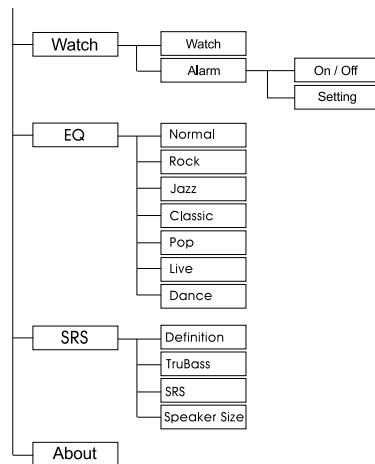
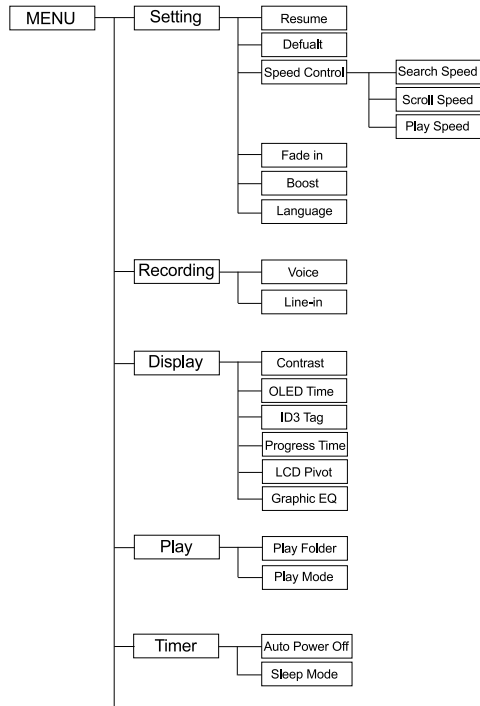


!Note

- Once the setting is made, the recording will start even when the device is turned off by automatically turning the power on.

Menus

Menu List	59
Menu Buttons	61
Setting	63
Recording	67
Display	68
Play	70
Timer	71
Watch	72
EQ	73
SRS	74
About	75

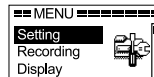


Main menu

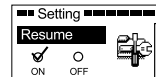
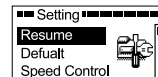
Sub menu

Set menu

There are all 9 main menus in the device



There are sub menus underneath each main menu.

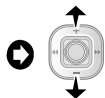
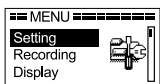


1. Entering 'Menu'

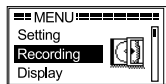


Press and hold

2. Searching menus



push



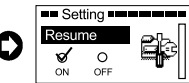
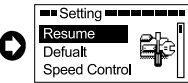
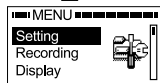
3. Entering the sub-menus (setting menus)



Press or push



FF push



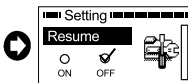
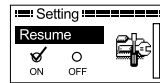
4. Changing and saving 'Setting values'



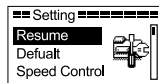
REW ← → FF to the arrow directions to change the value



Press



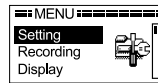
5. Returning to the Main menu



REW

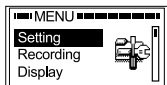


push



■ Press  or  to exit the menu modes.

- Select "Setting" from the main menu.



Resume

This function fully recovers all previous settings used for the last song's volume, EQ, Playlist and others when you turn the power on again.



On: fully recovers all previous setting information

Off: The setting values are not saved

Default

You can reset all settings you made into the default values.

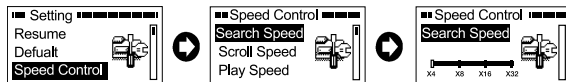


Yes: All information will be initialized

No: The settings you made will be saved.

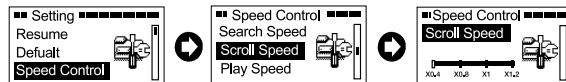
Speed Control - Search Speed

The search speed (FF/REW) can be set with this function among the following options; (X4, X8, X16, X32)



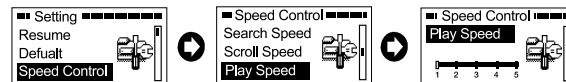
Speed Control - Scroll Speed

The speed of file playing can be set among the following options; (X0.4, X0.6, X0.8, X1, X1.2)



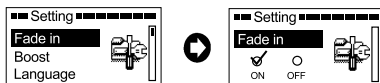
Speed Control - Play Speed

The speed of the text streaming can be adjusted within the range from 1 to 5.



Fade in

This function slowly increases the intro volume of music up to the set volume level.



On: The volume of the file is increased to the preset level.

Off: The file plays with the set volume level.

Boost

This enables you to listen to a music file with higher volume when the file is in low volume.



On: You can enjoy the higher volume.

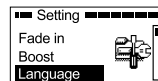
Off: The function is not available.

Note

- The power volume function may consume more battery power.

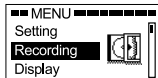
Language

The language for Menu can be selected in the mode.



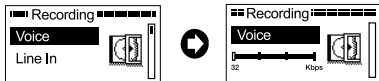
The language you selected will be displayed for menus.

- Select "Recording" from the main menu



Voice

Bit rates for the recording can be selected among 64, 96, 128 and 192kbps.



Line In

Bit rates for the recording can be selected among 64, 96, 128 and 192kbps.



Note

- When the sound quality is set for 'low' it takes only small memory space while 'high' quality takes larger space with lesser quality loss.

- Select "Display" from the main menu



Contrast

You can set the brightness of LCD within the range from 1 to 10.



OLED Time

Lightening period can be set among the following options; 5sec./ 15sec./ 30sec./ 100sec./ always)



ID3 Tag

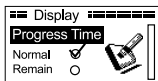
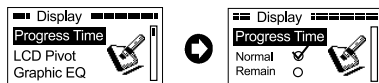
It enables you to select the displaying type for file names



file name : displays the name of the music file
ID3 tag : displays the ID3 tag info. saved in the music file.

Progress Time

This enables you to select the method how to display the file elapsing time.

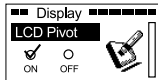


Normal : displays the current file's progress

Remain : displays the remaining time for the file

LCD Pivot

It enables you to turn the screen up or down.

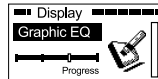


On: The LCD screen turns 180 degrees.

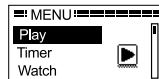
Off: No change

Graphic EQ

This enables you to display four different types of images on the LCD; Wave / Stereo/ Progress/ Watch)

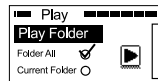


- Select "Play" from the main menu.



Play Folder

You can select the playing range for files.

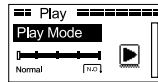


Folder All : All music files stored in the device will be played.


Current Folder : The music files in the current file will be played.

Play Mode

You can select the play mode you desire among the following options; (Normal/ Repeat1/ Repeat All/ Random/ Random All)



!Note

- Press  and hold in play mode to change the play mode. (see page 34)

- Select "Timer" from the main menu.



Auto Power Off

This function turns off the device power automatically when there is no button manipulation made for the preset period of time in the Pause or Stop mode. (Disable/ 1min/ 2min/ 5min/ 10min)



Sleep Mode

This function automatically turns off the power of the device after a preset period of time; Disable/ 10min/ 20min/ 30min/ 60min.



Note

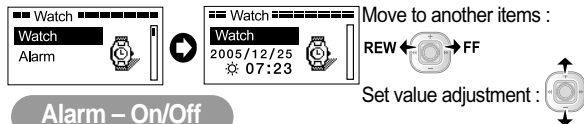
- Sleep Mode: When turning the power on again, the mode is set for OFF.

- Select "Watch" from the main menu.
- You cannot enter into clock mode while playing music.



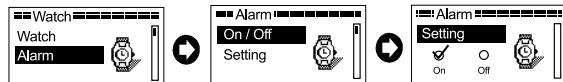
Watch

The current time is displayed on the LCD according to your setting for Year, Month, Date, Day and time.



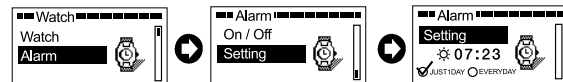
Alarm – On/Off

You can use or cancel the alarm function using this function.



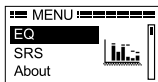
Alarm – Setting

You can set the time and the number of alarms in the mode.

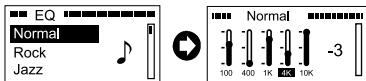


Move to another items : REW ← → FF Set value adjustment :

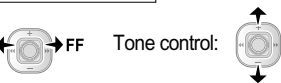
- Select "EQ" from the main menu.



You can edit the EQ setting according to your own taste among the following options; Normal, Rock, Jazz, Classic, Pop, Live, Dance)



Band shift (5-band): REW ← → FF Tone control:



EQ Reset



Press

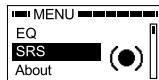
You can reset the EQ to the original value.

Note

- If further setting is not made, you can listen to the music in the tone originally set in the device.

SRS

- Select "SRS" from the main menu.



Definition

You can set the sound definition within the range from 0 to 10.



TruBass

This function enhances the bass within the range from 0 to 10.



SRS

3D surround volume can be set within the range from 0 to 10.





Menus

SRS/ About

Speaker Size

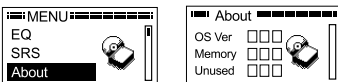
This enables you to set the optimum sound condition for SRS by selecting the speaker sizes within the range from 0 to 7.



About

- Select "About" from the main menu.

It displays device information such as OS version, memory capacity, remaining memory and others.



!Note

- The information for OS memory is not displayed.

Programs

Program CD installation	77
File Download-Upload	80
Format	83

System Requirement

The minimal requirements for the PC to support the device is as follows;

- Microsoft OS (Windows 98SE, ME, 2000, XP)
- CD-Rom Drive
- Pentium 200MHz or higher version
- RAM 32MB (64MB or more for Windows ME or higher version)
- More than 128Mb free space in the hard disk (additional space is required to save more music files)
- USB port (Ver. 2.0)
- Mac. 9.X- X

Installation

!Note

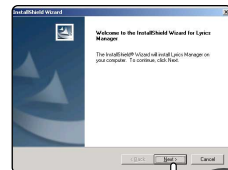
- This Mass Storage type device can upload or download files without installing any extra software.

- In case of using Windows 98SE: Please install the program CD supplied with the device before uploading or downloading files. (PC may not recognize the device)

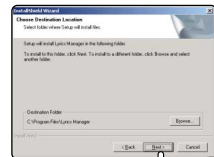
1. The files in the CD will be executed automatically following the insertion and a popup box for 'installation language' will appear. Click on OK following the selection of the language you desire. (If the setup file is not opened automatically, you may find the setup.exe file in the CD Rom and execute it manually.)



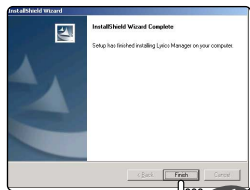
2. Click on "Next"



3. Click on "Next" following the selection of the file you want to install in the PC.



4. Click on (Finish) button to complete the installation.



An icon "Lyrics Manager" is created on the desktop.

!Note

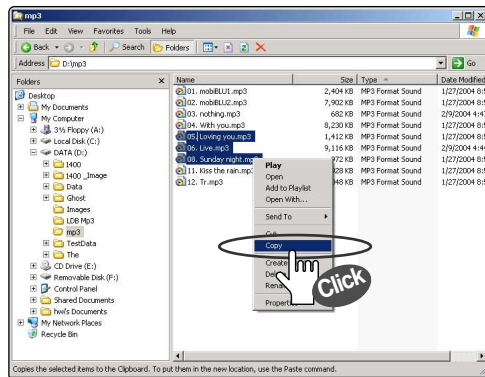
- Below box will pop up if you use Windows 98SE. Click on OK.



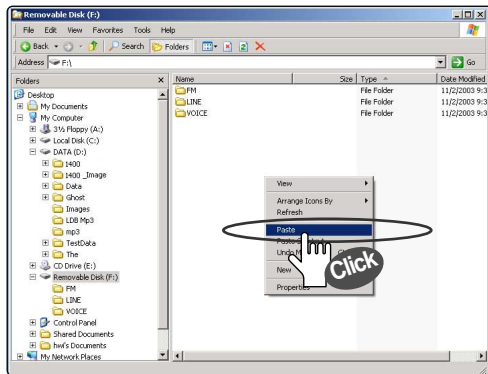
!Note

- This Device downloads or uploads all types of data files (*.jpg, *.xls, *.hwp.....) taking the role as a removable disk as well as a music player.

1. To download files connect the USB cable and click on "Copy" using the right mouse button following the selection of files in PC.



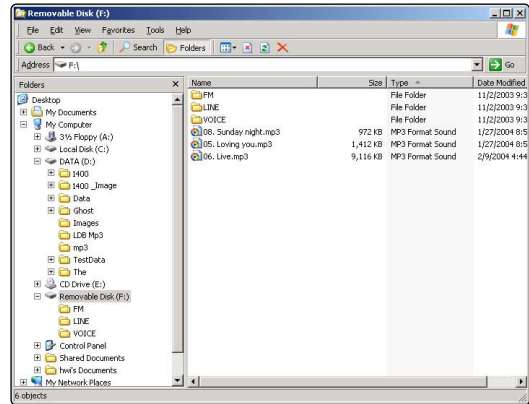
2. Click on "Paste" to paste the copied file into the 'Removable Disk' box using the right mouse button.



Note

- The PC recognizes the device as a removable disk in "My Computer."
- Don't remove the USB cable while transferring the files otherwise it may cause a fatal error in PC or the Device.

3. Downloading the files selected in the PC to the Device is completed.



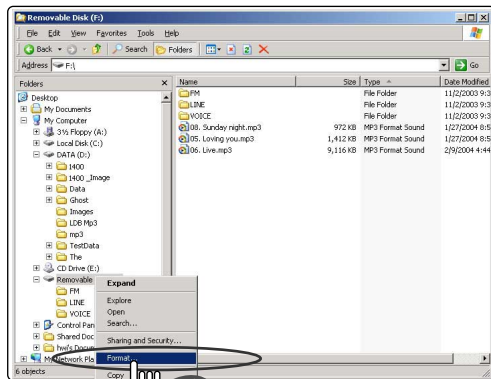
Note

- You can upload the files from the device to the PC by following the same procedures but in reverse way.
- Drag & Drop makes it very easy to download or upload files.

!Note

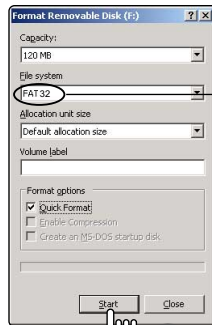
- The removed files can not be recovered!

1. Choose "format" in the removable disk folder using the right mouse button.



Click

2. Click on 'Start' button when a format box pops up.



Check if file system is set for FAT32

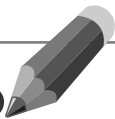
Be very careful at formatting!

3. Format has been completed!



Click

MEMO



Support

It may not be a problem! 87
FCC RF INTERFERENCE STATEMENT
Warranty Card

1. Cannot turn the Power on?



- Check battery capacity. Recharge the battery with a USB cable.
- Check if the device is in HOLD.

2. The button is not functioning.



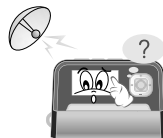
- Check if the device is in HOLD.

3. Can not properly hear the sound sources, and there is a noise interference?



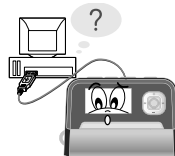
- Check if any foreign material is applied on the earphone tip, and if yes, remove it.
- Completely connect the earphone into the device.
- Check if the file is damaged.
- Check the volume.

4. Too much noise interference in receiving FM signals?



- Check if the earphone is completely inserted into the jack. It functions as an antenna.
- Use the device away from peripheral electric devices

5. There is a trouble with file downloading?



- Check the connection of the USB cable.
- Check the memory capacity.

6. LCD is not activated?



- Check the LCD brightness setting. Menu – Display – Contrast
- Check the battery. Recharge it with a USB cable if needed.

FCC RF INTERFERENCE STATEMENT

Note

This equipment has been tested and found to comply with the limits for a Class B digital device, pursuant to Part 15 of the FCC Rules. These limits are designed to provide reasonable protection against harmful interference in a residential installation.

This equipment generates, uses and can radiate radio frequency energy and, if not installed and used in accordance with the instructions, may cause harmful interference to radio communications. However, there is no guarantee that interference will not occur in a particular installation.

If this equipment does cause harmful interference to radio or television reception which can be determined by turning the equipment off and on, the user is encouraged to try to correct the interference by one or more of the following measures.

- Reorient or relocate the receiving antenna.
- Increase the separation between the equipment and receiver.
- Connect the equipment into an outlet on a circuit different from that to which the receiver is connected.
- Consult the dealer or an experienced radio, TV technician for help.
- Only a shielded interface cable should be used.

Finally, any changes or modifications to the equipment by the user not expressly approved by the guarantee or manufacturer could void the warranty the users authority to operate such equipment.

CAUTION

Changes or modifications not expressly approved by the manufacturer could void the warranty.

THIS DEVICE COMPLIES WITH PART 15 OF THE FCC RULES. OPERATION IS SUBJECT TO THE FOLLOWING TWO CONDITIONS: (1) THIS DEVICE MAY NOT CAUSE HARMFUL INTERFERENCE, AND (2) THIS DEVICE MUST ACCEPT ANY INTERFERENCE RECEIVED INCLUDING INTERFERENCE THAT MAY CAUSE UNDESIRE OPERATION.

Warranty Card

Product Name:

Model:

Date of Purchase: (m) (d) (y)

Name of Customer

Telephone Number:

Address:

Name of Agent:

Telephone Number:

Address:

1 year from
the date of
purchase

 Hyun Won Inc.

- You need to present this Warranty Card with the date of purchase written thereon when required in order to receive satisfactory services. Please keep this card in a secure place.

1. The warranty service for the product shall be provided based on the information contained in this Warranty Card.
2. The warranty service is available effective from the date of purchase, so please put the date of purchase on this Warranty Card. (If the date of purchase is not identified in the card, the effective warranty period will start from the date 6 months from the date of manufacture.)
3. This Warranty Card can not be reissued

The design and size of the product are subject to change without prior notice in order to improve product quality.